



# We'll make your landscape **EPIC**

**Family-run horticultural landscape design**

---

## More than 20 years in the business

**Our talented, experienced and horticulturally qualified designer, Luke Robertson, has a huge passion for lush, contemporary and textured landscapes. The key to achieving your vision is not only to be an interpretation of your wants, needs and desires, your landscape needs to reflect your personality and maximise the space in your outdoor living area.**

**A new landscape design will not only add value to your home, it will enhance your lifestyle. Whatever the size of your outdoor space, Luke will design something inspired by you.**



---

**"Luke came up with a comprehensive design that was sophisticated, site appropriate and totally creative focused. His consideration of how the plants, trees and hardscapes would be viewed from different vantage points in different seasons was thoughtful and intelligent. We can't speak highly enough of Luke and think anyone needing a landscape design at any level should meet with him."**

**Rebecca Toone, Ray White Metro**

---

**"The design process with Luke was really enjoyable. He listened to what we were trying to achieve and provided us with a stunning plan. We wouldn't hesitate to recommend his service."** **Matthew & Nina McCallum-Clark, Ohoka**

**epiclandscapes.co.nz | 027 688 4155**

**design@epiclandscapes.co.nz @epiclandscapedesign**



**EPIC**  
**Landscape**  
**Design**

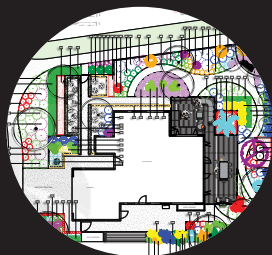
# How can I help you?



## CONSULTATION

**(\$260 + GST)**

A consultation is where I will begin to explore your ideas and desires for your outdoor living area. Once the consultation is complete, I will email you a detailed set of notes (brief) to ensure I have captured your wants, needs and desires, and include a detailed fee proposal to undertake your planting or full landscape design plan.



## PLANTING DESIGN

Need a garden makeover? I'll start the ball rolling with a consultation and will go on to design a new planting design (soft landscape).



## PLANT SOURCING

As a qualified horticulturist, not only do I design plants and trees that will work for your climate and soil structure (as part of my plant design service), it is important to me that you are getting the best quality and species of plants (at a great price!). Therefore, I can source and supply your plants and trees for you when you're ready to put them in the ground.



## FULL LANDSCAPE DESIGN

This is all the bells and whistles! It will begin with a consultation followed by a site survey and measurement. I will then present you a preliminary concept design plan featuring your hard landscaping to ensure we are on the same page. Following this meeting, I will develop the full hard and soft landscaping design plan which will include plant positions and a full plant list.

**epiclandscapes.co.nz | 027 688 4155**

**design@epiclandscapes.co.nz @epiclandscapedesign**



**EPIC**  
**Landscape**  
**Design**