

# CONTACT US

## Where to find us

Phone: 03 9888 9595

Email: [Sales@outway.com.au](mailto:Sales@outway.com.au)

Address: 161 Indian Drive, Keysborough, VIC 3173

Web: [Outway.com.au](http://Outway.com.au)

# ***OUTWAY***<sup>®</sup>



## Garden Light Catalogue

# OUTWAY'S STORY

## VISION

Leading the charge towards a sustainable future,  
leveraging green technologies in intelligent systems,  
energy-efficient lighting, clean energy,  
and enhancing outdoor living through eco-conscious solutions.

## MISSION

Empowering industries and communities with innovative  
and eco-friendly solutions, our mission is to drive the widespread  
adoption of green technologies, shaping a brighter, sustainable future.  
We extend our commitment to enhancing outdoor living  
experiences through thoughtfully designed eco-conscious products.

## VALUES

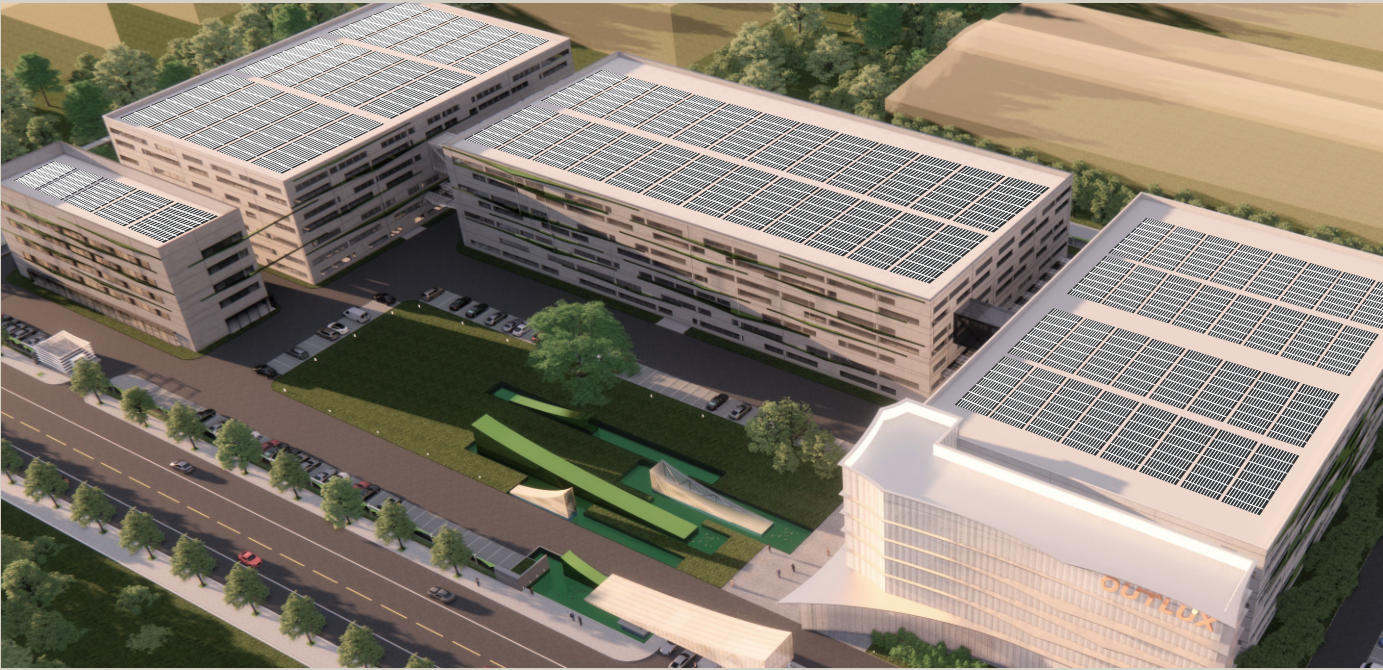
**Green Innovation:**  
Pioneering eco-friendly solutions for both indoor and outdoor spaces.

**Environmental Excellence:**  
Setting industry benchmarks for sustainability,  
including our outdoor living products.

**Collaborative Sustainability:**  
Working collaboratively for comprehensive green solutions  
that enrich outdoor living experiences.

**Eco-conscious Integrity:**  
Upholding transparency and environmentally responsible practices  
in all aspects of our business, from technology to outdoor products.

**Customer-Centric Sustainability:**  
Tailoring eco-friendly solutions, including our outdoor living products,  
and fostering enduring partnerships with our customers.



154 +  
countries exported



29 +  
years experience



3,000,000 +  
pcs/month



650 +  
customers



# RECEIVE HONOR

## Intellectual property

Sound layout at home and abroad  
Owned trademarks 60+  
Owned patents 120+

— HONOR —

## Eight management systems

Quality, Environment, Occupational Health and Safety, Product Consistency, Safe Production, Social Responsibility, Intellectual Property Management, Integrate IT application with industrialization

— HONOR —

## Standardization construction

Participate in the preparation of national standards, industry standards, and group standards 10+

— HONOR —

## Global certification

CCC、CQC、CE、CB、UKCA、GS、UL、BIS、ETL certificate

— HONOR —

## Enterprise honor

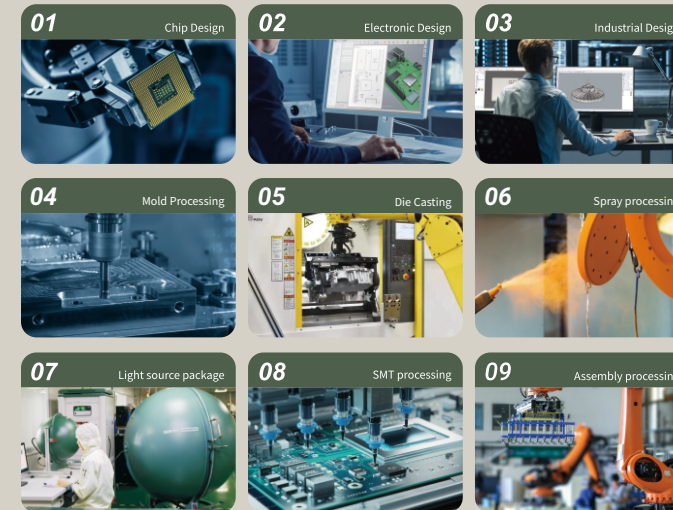
High-tech enterprise, specialized, sophisticated, unique and new' little giant company

— HONOR —



# MANUFACTURING CAPACITY

Advanced equipment,exquisite craftsmanship, to make the first-class product



# TEST ABILITY & TEST ITEMS

Various testing facilities, strict quality control  
Germany TUV Rheinland Cooperative Laboratory



- Line leakage test
- Dust-proof test
- Glow-wire test
- Needle-flame test
- Salt spray test
- Lifespan test
- UV test
- Drop test
- Integrating sphere test
- Safety test
- Constant temperature & humidity test
- Thermal test
- Aging test
- IPX5/IPX6 test
- IPX7 test
- Suspension test
- DC Power test
- Electronic load test
- RoHS test
- 3G vibration test
- Wind-resistance test
- Wind-shield
- Power meter
- Oven
- Electronic balance
- Digital Multimeter
- Oscilloscope
- 3D printer



# Table of Content



Solar Floodlight

P1-1



Solar Lawn Light

P5-7



Garden Wall Lamp

P12-12



Solar Streetlight

P2-2



Solar Wall Light

P8-10



Underground Light

P13-14



Solar Garden Light

P3-4



Solar Capital Lamp

P11-11



Indoor Downlight

P15-16



# Solar Floodlight



- Mode: T001E
- Input Voltage: 6VDC
- Range of Voltage: 4~7.2VDC
- Color temperature: 3000/4000/6500K
- CRI: Ra70
- Efficacy ( $\pm 10\%$ ): 150LM/W
- Beam Angle: 120°

## PRODUCT FEATURES



8H SOLAR CHARGE



24H WORKING TIME

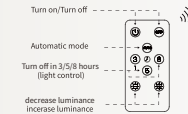


10M REMOTE CONTROL



1,000 TIMES BATTERY LIFE

## REMOTE CONTROL



# Solar Streetlight



- Mode: T007E
- Input Voltage: 5VDC
- Range of Voltage: 4~7.2VDC
- Color temperature: 3000/4000/6500K
- CRI: Ra70
- Efficacy ( $\pm 10\%$ ): 150LM/W
- Beam Angle: 130°

## PRODUCT FEATURES



8H SOLAR CHARGE



24H WORKING TIME

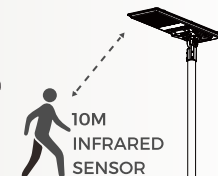
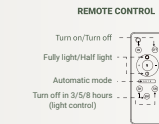


10M REMOTE CONTROL



1,000 TIMES BATTERY LIFE

## MOTION SENSOR





# Solar Garden Light



- **Mode:**  
PT0600
- **Material:**  
Die-casting aluminum+PC
- **Solar panel:**  
5V/28W
- **Battery:**  
3.2V/36000mAh
- **Quantity of LED chips:**  
160PCS
- **Charge time:**  
3-5H
- **Color temperature:**  
3000-6500K
- **Size:**  
Φ530\*H580mm



- **Mode:**  
PT0601
- **Material:**  
Die-casting aluminum+PC
- **Solar panel:**  
5V/25W
- **Battery:**  
3.2V/30000mAh
- **Quantity of LED chips:**  
160PCS
- **Charge time:**  
3-5H
- **Color temperature:**  
3000-6500K
- **Size:**  
Φ530\*H490mm



- **Mode:**  
PT0602
- **Material:**  
Die-casting aluminum+PC
- **Solar panel:**  
5V/20W
- **Battery:**  
3.2V/20000mAh
- **Quantity of LED chips:**  
80PCS
- **Charge time:**  
3-5H
- **Color temperature:**  
3000-6500K
- **Size:**  
Φ400\*H410mm



- **Mode:**  
PT0603
- **Material:**  
Die-casting aluminum+PC
- **Solar panel:**  
5V/20W
- **Battery:**  
3.2V/30000mAh
- **Quantity of LED chips:**  
80PCS
- **Charge time:**  
3-5H
- **Color temperature:**  
3000-6500K
- **Size:**  
Φ480\*H440mm



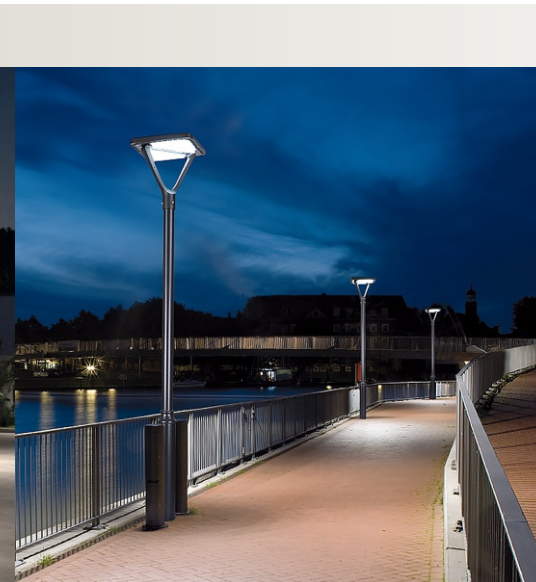
- **Mode:**  
PT0604
- **Material:**  
Die-casting aluminum+PC
- **Solar panel:**  
5V/20W
- **Battery:**  
3.2V/20000mAh
- **Quantity of LED chips:**  
80PCS
- **Working mode:**  
Time control, Microwave sensor,  
Optical sensor
- **Color temperature:**  
3000-6500K
- **Size:**  
Φ480\*H410mm



- **Mode:**  
PT0605
- **Material:**  
Die-casting aluminum+PC
- **Solar panel:**  
5V/25W
- **Battery:**  
3.2V/20000mAh
- **Quantity of LED chips:**  
80PCS
- **Working mode:**  
Time control, Microwave sensor,  
Optical sensor
- **Color temperature:**  
3000-6500K
- **Size:**  
Φ400\*H420mm



- **Mode:**  
PT0606
- **Material:**  
Die-casting aluminum+PC
- **Solar panel:**  
5V/38W
- **Battery:**  
3.2V/60000mAh
- **Quantity of LED chips:**  
150PCS
- **Working mode:**  
Time control, Microwave sensor,  
Optical sensor
- **Color temperature:**  
3000-6500K
- **Size:**  
Φ700\*Φ520\*H650mm





# Solar Lawn Light



- **Mode:**  
PT036B
- **Material:**  
Die-casting aluminum+PC
- **Solar panel:**  
5V/5W
- **Battery:**  
3.2V/8000mAh
- **Quantity of LED chips:**  
30PCS
- **Charge time:**  
3-5H
- **Color temperature:**  
3000-6500K
- **Size:**  
150\*235\*H600mm  
150\*235\*H800mm  
150\*235\*H1000mm



- **Mode:**  
PT033B
- **Material:**  
Die-casting aluminum+PC
- **Solar panel:**  
5V/4.5W
- **Battery:**  
3.2V/6000mAh
- **Quantity of LED chips:**  
40PCS
- **Charge time:**  
8H
- **Color temperature:**  
3000-6500K
- **Size:**  
Φ237\*H600mm  
Φ237\*H800mm  
Φ237\*H1000mm



- **Mode:**  
PT035
- **Material:**  
Die-casting aluminum+PC
- **Solar panel:**  
5V/5W
- **Battery:**  
3.2V/6AH 18650 4\*1500MA
- **Quantity of LED chips:**  
40PCS
- **Charge time:**  
4-7H
- **Color temperature:**  
3000-6500K
- **Size:**  
Φ230\*H400mm  
Φ230\*H600mm  
Φ230\*H800mm  
Φ230\*H1000mm



- **Mode:**  
PT0300
- **Material:**  
Die-casting aluminum+PC
- **Solar panel:**  
5V/2W
- **Battery:**  
3.2V/3000mAh
- **Quantity of LED chips:**  
20PCS
- **Charge time:**  
3-5H
- **Color temperature:**  
3000-6500K
- **Size:**  
Φ158\*H500mm  
Φ158\*H700mm



- **Mode:**  
PT0301
- **Material:**  
Die-casting aluminum+PC
- **Solar panel:**  
5V/2W
- **Battery:**  
3.2V/3000mAh
- **Quantity of LED chips:**  
20PCS
- **Charge time:**  
3-5H
- **Color temperature:**  
3000-6500K
- **Size:**  
Φ185\*H500mm  
Φ185\*H700mm



- **Mode:**  
PT0302
- **Material:**  
Die-casting aluminum+PC
- **Solar panel:**  
5V/4.5W
- **Battery:**  
3.2V/mAh
- **Quantity of LED chips:**  
30PCS
- **Charge time:**  
3-5H
- **Color temperature:**  
3000-6500K
- **Size:**  
Φ260\*Φ120\*H500mm  
Φ260\*Φ120\*H700mm





- **Mode:** PT0306
- **Material:** Die-casting aluminum+PC
- **Solar panel:** 5V/5W
- **Battery:** 3.2V/8000mAh
- **Quantity of LED chips:** 30PCS
- **Charge time:** 3-5H
- **Color temperature:** 3000-6500K
- **Size:** 235\*140\*H600mm  
235\*140\*H800mm



- **Mode:** PT0307
- **Material:** Die-casting aluminum+PC
- **Solar panel:** 5V/4.5W
- **Battery:** 3.2V/6000mAh
- **Quantity of LED chips:** 20PCS
- **Charge time:** 3-5H
- **Color temperature:** 3000-6500K
- **Size:** Φ230\*Φ150\*H300mm  
Φ230\*Φ150\*H600mm  
Φ230\*Φ150\*H800mm



- **Mode:** PT0308
- **Material:** Die-casting aluminum+PC
- **Solar panel:** 5V/5W
- **Battery:** 3.2V/6000mAh
- **Quantity of LED chips:** 30PCS
- **Charge time:** 3-5H
- **Color temperature:** 3000-6500K
- **Size:** 200\*140\*H400mm  
200\*140\*H600mm  
200\*140\*H800mm



- **Mode:** PT0309
- **Material:** Die-casting aluminum+PC
- **Solar panel:** 5V/4.5W
- **Battery:** 3.2V/8000mAh
- **Quantity of LED chips:** 30PCS
- **Charge time:** 3-5H
- **Color temperature:** 3000-6500K
- **Size:** Φ260\*Φ150\*H350mm  
Φ260\*Φ150\*H650mm  
Φ260\*Φ150\*H850mm

# Solar Wall Light



- **Mode:** PT0100
- **Material:** Die-casting aluminum+PC
- **Solar panel:** 5V/4.5W
- **Battery:** 3.2V/8000mAh
- **Quantity of LED chips:** 30PCS
- **Charge time:** 3-5H
- **Color temperature:** 3000-6500K
- **Size:** Φ260\*H370mm



- **Mode:** PT0101
- **Material:** Die-casting aluminum+PC
- **Solar panel:** 5V/4.5W
- **Battery:** 3.2V/8000mAh
- **Quantity of LED chips:** 30PCS
- **Charge time:** 3-5H
- **Color temperature:** 3000-6500K
- **Size:** Φ240\*H450mm



- **Mode:** PT0102
- **Material:** Die-casting aluminum+PC
- **Solar panel:** 5V/4.5W
- **Battery:** 3.2V/8000mAh
- **Quantity of LED chips:** 30PCS
- **Charge time:** 3-5H
- **Color temperature:** 3000-6500K
- **Size:** Φ260\*H310mm





- **Mode:**  
PT033W
- **Material:**  
Die-casting aluminum+PC
- **Solar panel:**  
5V/4.5W
- **Battery:**  
3.2V/6000mAh
- **Quantity of LED chips:**  
40PCS
- **Charge time:**  
8H
- **Color temperature:**  
3000-6500K
- **Size:**  
Φ257\*H80mm



- **Mode:**  
PT036W
- **Material:**  
Die-casting aluminum+PC
- **Solar panel:**  
5V/5W
- **Battery:**  
3.2V/8000mAh
- **Quantity of LED chips:**  
30PCS
- **Charge time:**  
8H
- **Color temperature:**  
3000-6500K
- **Size:**  
235\*150\*H130mm



- **Mode:**  
PT0105
- **Solar Panel Type:**  
3W Monocrystalline
- **Defense:**  
IP44
- **Main Material:**  
Synthetics+Opal PC
- **Output Lumen:**  
500LM
- **Battery Type:**  
2\*3.7V 4400mAh
- **Sensor:**  
Time:30S;Distance:8M;Angle:120
- **Color temperature:**  
4000K
- **Color:**  
Black
- **Size:**  
203\*208\*214mm



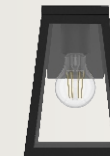
- **Mode:**  
PT0106
- **Solar Panel Type:**  
1.5W Polycrystalline
- **Defense:**  
IP44
- **Main Material:**  
Heavy-Duty Aluminum+Clear PC
- **Output Lumen:**  
1000LM
- **Battery Type:**  
1\*3.7V 1500mAh
- **Sensor:**  
Time:30S;Distance:10M;Angle:120
- **Color temperature:**  
4000K
- **Color:**  
Matt Black
- **Size:**  
190\*140\*150mm



- **Mode:**  
PT0107
- **Solar Panel Type:**  
2W Monocrystalline
- **Defense:**  
IP44
- **Main Material:**  
Heavy-Duty Aluminium+Clear Glass
- **Output Lumen:**  
180LM
- **Battery Type:**  
1\*3.7V 2200mAh
- **Running time:**  
8H when full battery charged
- **Color temperature:**  
2700K
- **Color:**  
Matt Black
- **Size:**  
384.5\*305\*308mm



- **Mode:**  
PT0108
- **Solar Panel Type:**  
2W Monocrystalline
- **Defense:**  
IP44
- **Main Material:**  
Heavy-Duty Aluminium+Clear Glass
- **Output Lumen:**  
180LM
- **Battery Type:**  
1\*3.7V 1500mAh
- **Running time:**  
8H when full battery charged
- **Color temperature:**  
2700K
- **Color:**  
Matt Black
- **Size:**  
212\*195\*365mm



- **Mode:**  
PT0109
- **Solar Panel Type:**  
1.2W Monocrystalline
- **Defense:**  
IP44
- **Main Material:**  
Heavy-Duty Aluminium+Clear Glass
- **Output Lumen:**  
180LM
- **Battery Type:**  
1\*3.7V 1500mAh
- **Running time:**  
8H when full battery charged
- **Color temperature:**  
2700K
- **Color:**  
Matt Black
- **Size:**  
164\*140\*207mm



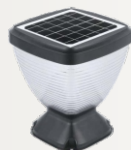
# Solar Capital Lamp



- **Mode:** PT0110
- **Material:** Die-casting aluminum+PC
- **Solar panel:** 5V/4.5W
- **Battery:** 3.2V/8000mAh
- **Quantity of LED chips:** 30PCS
- **Charge time:** 3-5H
- **Color temperature:** 3000-6500K
- **Size:** Φ260\*Φ120\*H330mm



- **Mode:** PT0111
- **Material:** Die-casting aluminum+PC
- **Solar panel:** 5V/4.5W
- **Battery:** 3.2V/8000mAh
- **Quantity of LED chips:** 30PCS
- **Charge time:** 3-5H
- **Color temperature:** 3000-6500K
- **Size:** Φ260\*Φ150\*H250mm



- **Mode:** PT0112
- **Material:** Die-casting aluminum+PC
- **Solar panel:** 5V/5W
- **Battery:** 3.2V/8000mAh
- **Quantity of LED chips:** 30PCS
- **Charge time:** 3-5H
- **Color temperature:** 3000-6500K
- **Size:** 235\*175\*H275mm

# Garden Wall Lamp



- **Mode:** PZ001
- **Power:** 40W
- **Defense:** IP44
- **Main Material:** Heavy-Duty Aluminium+Clear Glass
- **Sensor:** Time:1M-3M-10M-15MS;Distance:18;Angle:180
- **Color temperature:** 3000-6500K
- **Color:** Matt Black
- **Size:** 172x120x326mm



- **Mode:** PZ002
- **Power:** 17. 3W
- **Defense:** IP44
- **Main Material:** Heavy-Duty Aluminium+OPAL
- **Sensor:** Time:1M/3M/10M/15MS;Distance:18;Angle:180
- **Color temperature:** 2700-6500K
- **Color:** Dark Grey
- **Size:** 195x92x325mm



# Underground Light



- **Mode:** PD0202
- **Voltage:** AC/DC12V
- **Outgoing line:** 0.3M 2 x 0.75 square
- **Defense:** IP65
- **Material:** Sand black case + bevel one
- **Color temperature:** 3000K
- **Size:** Φ40\*H190mm



- **Mode:** PD0200
- **Voltage:** AC/DC12V
- **Outgoing line:** 0.3M 2 x 0.75 square
- **Defense:** IP65
- **Material:** Matte black case + flat head + pin
- **Color temperature:** 3000K
- **Size:** Φ43\*H190mm



- **Mode:** PD0201
- **Material:** Aluminum body+spike+Reflector +PMMA lens
- **Voltage:** AC85-265V / 12V / 24V
- **Led Initial Flux:** 323lm
- **LED Quantity:** 1pcs of COB
- **Working Life-span:** 20000hours
- **Color temperature:** 3000K/6500K
- **Size:** Φ43\*H245mm



- **Mode:** PD0203
- **Material:** Diecasting Aluminum
- **Voltage:** AC85-265V / 12V / 24V
- **Led Initial Flux:** 323lm
- **LED Quantity:** 1pcs of COB
- **Working Life-span:** 20000hours
- **Color temperature:** 3000K/6500K
- **Size:** Φ90\*H260mm



- **Mode:** PD0205
- **Voltage:** AC/DC12V
- **Outgoing line:** 0.3M 2 x 0.75 square
- **Defense:** IP68 (Drive filling)
- **Lamp bead:** 30 degree bead lens

- **Material:** 304 stainless steel + embedded parts
- **Color temperature:** 3000K
- **Size:** Φ52\*H80mm



- **Mode:** PD0204
- **Voltage:** 5W COB
- **Outgoing line:** 0.3M 2 x 0.75 square
- **Defense:** IP67 (Drive filling)
- **Lamp bead:** COB+ anti-glare net + lens

- **Material:** Die casting sand black + embedded parts
- **Color temperature:** 3000K
- **Size:** Φ65\*H80mm



- **Mode:** PT0113
- **Solar Panel Power:** 6V/1.5W
- **Battery capacity:** 2000mAh
- **Battery Type:** Lithium battery/18650
- **Lamp Material:** ABS

- **Color temperature:** 2700K/6000K/RGB
- **Charging time:** 4-5H
- **Lighting time:** 8-12H
- **Control mode:** Light/time control
- **Lampbody Size:** Φ60\*H260mm



- **Mode:** PT0113-2
- **Solar Panel Power:** 6V/3W
- **Battery capacity:** 4000mAh
- **Battery model:** Lithium battery/18650
- **Lamp body Material:** ABS+fiber/black

- **Color temperature:** 3000K/6500K/RGB
- **Charging time:** 4-5H
- **Lighting time:** 8-12H
- **Control mode:** Light control+key switch
- **Lamp body Size:** Φ60\*H260mm



# Indoor Downlight



- **Mode:**  
PD0500
- **Input Voltage:**  
AC200-240V 50Hz
- **Rated Power:**  
10W
- **LED:**  
COB LED
- **CRI:**  
Ra80
- **Fitting Materials:**  
Aluminium body +PMMA Lens
- **Lunens:**  
850-900Lumen
- **CCT:**  
3000K/4200K/6500K
- **Product size:**  
Φ100mm H85mm



- **Mode:**  
PD0501
- **Input Voltage:**  
AC200-240V 50Hz
- **Rated Power:**  
10W
- **LED:**  
COB LED
- **CRI:**  
Ra80
- **Fitting Materials:**  
Aluminium body +PMMA Lens
- **Lunens:**  
850-900Lumen
- **CCT:**  
3000K/4200K/6500K
- **Product size:**  
Φ100mm H85mm



- **Mode:**  
PD0502
- **Input Voltage:**  
AC200-240V 50Hz
- **Rated Power:**  
10W
- **LED:**  
COB LED
- **CRI:**  
Ra80
- **Fitting Materials:**  
Aluminium body +PMMA Lens
- **Lunens:**  
850-900Lumen
- **CCT:**  
3000K/4200K/6500K
- **Product size:**  
Φ100mm H107mm



- **Mode:**  
PD0503
- **Input Voltage:**  
AC200-240V 50Hz
- **Rated Power:**  
10W
- **LED:**  
COB LED
- **CRI:**  
Ra80
- **Housing:**  
Die-casting aluminum
- **Lunens:**  
800-850Lumen (White)  
750-800Lumen (Black)
- **Color temperature:**  
3000K/4200K/6500K
- **Product size:**  
Φ100mm \* H77mm



- **Mode:**  
PD0504
- **Input Voltage:**  
AC200-240V 50Hz
- **Rated Power:**  
9W
- **LED:**  
COB LED
- **CRI:**  
Ra80
- **Housing:**  
Plastic wrapped aluminium
- **Lunens:**  
780-850Lumen (White)  
700-800Lumen (Black)
- **Color temperature:**  
3000K/4000K/5000K
- **Product size:**  
Φ100mm \* H85mm



- **Mode:**  
PD0505
- **Input Voltage:**  
AC200-240V 50Hz
- **Rated Power:**  
9W
- **LED:**  
COB LED
- **CRI:**  
Ra80
- **Housing:**  
Plastic wrapped aluminium
- **Lunens:**  
780-850Lumen (White)  
720-800Lumen (Black)
- **Color temperature:**  
3000K/4000K/5000K
- **Product size:**  
Φ108mm \* H81mm



- **Mode:**  
PD0506
- **Input Voltage:**  
AC200-240V 50Hz
- **Rated Power:**  
8W
- **LED:**  
SMD LED 2835
- **CRI:**  
Ra80
- **Housing:**  
Plastic wrapped aluminium
- **Lunens:**  
780-850Lumen
- **Color temperature:**  
3000K/4000K/5000K
- **Product size:**  
Φ115mm \* H60mm



# Decorative Light



- **Mode:** PT0800
- **Colour:** Grey
- **Material:** Stainless steel
- **Power Consumption:** LED\*5W
- **Color temperature:** 3000K
- **Voltage:** DC3.7V
- **IP Rating:** IP54
- **Size:** Φ600\*H450mm/Φ4500\*H600mm



- **Mode:** PT0801
- **Colour:** Grey
- **Material:** Stainless steel + PC
- **Power Consumption:** LED\*7W
- **Color temperature:** 3000K
- **Voltage:** DC3.7V
- **IP Rating:** IP54
- **Size:** 290\*260\*390mm/290\*260\*550mm



- **Mode:** PT0802
- **Colour:** Grey
- **Material:** Iron art
- **Power Consumption:** LED\*5W
- **Color temperature:** 3000K
- **Voltage:** DC3.7V
- **IP Rating:** IP54
- **Size:** 360\*780\*560mm



- **Mode:** PT0803
- **Colour:** Grey
- **Material:** Stainless steel + glass
- **Power Consumption:** E27\*5W
- **Color temperature:** 3000K
- **Voltage:** DC3.7V
- **IP Rating:** IP54
- **Size:** Φ410\*450mm/Φ340\*700mm



- **Mode:** PT0804
- **Material:** Stainless steel + glass
- **Illuminant:** LED
- **Color temperature:** 3000K
- **Power collection mode:** Solar
- **IP Rating:** IP54
- **Colour:** Black
- **Size:** Φ200\*H360mm/Φ300\*H600mm/Φ300\*H1200mm



- **Mode:** PT0805
- **Material:** Aluminum + Iron + PE
- **Illuminant:** LED
- **Color temperature:** 3000K
- **Power collection mode:** Solar
- **IP Rating:** IP54
- **Colour:** Black
- **Size:** Φ56\*H55mm/Φ41\*H95mm



- **Mode:** PT0806
- **Material:** Stainless steel+ Resin
- **Illuminant:** LED
- **Color temperature:** 3000K
- **Power collection mode:** Solar
- **IP Rating:** IP54
- **Colour:** Black
- **Size:** Φ220\*H280mm/Φ200\*H480mm/Φ200\*H680mm



- **Mode:** PT0807
- **Material:** Stainless steel
- **Illuminant:** LED
- **Color temperature:** 3000K
- **Power collection mode:** Solar
- **IP Rating:** IP54
- **Colour:** Black
- **Size:** Φ250\*H450mm/Φ450\*H700mm





- **Mode:** PT0808-1/PT0808-2/PT0808-3
- **Material:** PE
- **Illuminant:** LED\*6W
- **Color temperature :** RGB
- **Power collection mode:** Solar
- **IP Rating:** IP65
- **Size:** Φ30cm/Φ60cm/Φ80cm



- **Mode:** PT0809
- **Material:** PE
- **Illuminant:** LED\*6W
- **Color temperature :** RGB
- **Power collection mode:** Solar
- **IP Rating:** IP65
- **Size:** 102\*40\*140cm

