

BLUYONDA®

art scarf Δ scarf art



AUSTRALIAN CHIFFON COLLECTION



"SUPERB FAIRYWREN"
PHOTOGRAPHY: NOVEMBER 2017.

DESTINATION: AUSTRALIA, VICTORIA, GREAT OCEAN ROAD, ANGLESEA.
SUBJECT: THE SUPERB FAIRYWREN (MALURUS CYANEUS). UNRELATED TO THE TRUE WREN AND COMMON IN THE UNDERGROWTH OF EASTERN AUSTRALIA THE MALE IS MOSTLY BLUE WITH BLACK BANDS (EARNING THE NAME BLUE WREN). THE BLUE TURNS IRIDESCENT DURING BREEDING TIME.
BYCH-005



"WILDFLOWER MONTAGE"
PHOTOGRAPHY: SEPTEMBER 2016
DESTINATION: AUSTRALIA, VICTORIA, GRAMPPIANS NATIONAL PARK.
SUBJECT: THREE SPRING WILDFLOWERS FOUND IN THE GRAMPPIANS.
CENTRE: GREVILLEA AQUIFOLIUM IS A SHRUBBY PLANT COMMONLY CALLED HOLLY.
RIGHT/LEFT: PROSTANTHERA ROTUNDFOLIA IS AN EVERGREEN BRANCH SHRUB WITH PURPLE CUP SHAPED FLOWERS.
EXTREME RIGHT: EPACRIS IMPRESSA IS ALSO KNOWN AS COMMON HEATH. THE FLOWER IS THE FLORAL EMBLEM OF VICTORIA.
BYCH-011



"GRAMPPIANS THRYPTOMENE"
PHOTOGRAPHY: SEPTEMBER 2016
DESTINATION: AUSTRALIA, VICTORIA, GRAMPPIANS NATIONAL PARK.
SUBJECT: THE SPRING WILDFLOWER THRYPTOMENE. COMMONLY KNOWN AS GRAMPPIANS THRYPTOMENE, THRYPTOMENE CALYCINA IS A SHRUB SPECIES THAT GROWS ABOUT 2 METRES HIGH. IT HAS SMALL LEAVES AND WHITE FLOWERS AND IS LISTED AS "RARE IN VICTORIA".
BYCH-012



"GUMNUTS"
PHOTOGRAPHY: JANUARY 2016
DESTINATION: AUSTRALIA, VICTORIA, TORQUAY.
SUBJECT: GUMNUTS.
A RECOGNISABLE CHARACTERISTICS OF EUCALYPTUS SPECIES ARE THE DISTINCTIVE FLOWERS AND WOODY FRUITS CALLED GUMNUTS. EUCALYPTUS IS A DIVERSE GENUS OF FLOWERING TREES WHICH DOMINATE THE TREE FLORA OF AUSTRALIA. THE GUMNUTS ARE ROUGHLY CONE-SHAPED AND HAVE VALVES AT THE END WHICH OPEN TO RELEASE THE SEEDS.
BYCH-010



"CLOUDEHILL SEASONS":
IMAGE CAPTURE: AUGUST AND NOVEMBER 2017.
DESTINATION: DANDENONG RANGES, VICTORIA, AUSTRALIA
SUBJECT: CLOUDEHILL GARDENS.

CLOUDEHILL GARDENS IS A COOL CLIMATE GARDEN IN THE DANDENONG RANGES CREATED BY JEREMY FRANCIS FROM A BULB AND FOLIAGE FARM STARTED BY THE WOOLRICH FAMILY IN 1920. HERE YOU WILL FIND GLORIOUS HISTORIC BEECH AND MAPLE TREES, ANCIENT RHODODENDRONS AND SUMMER FLOWER BORDERS.
IMAGES FOR THIS BEAUTIFUL SCARF ARE A COLLAGE TAKEN OVER SEVERAL SEASONS.
BYCH-019

SIZE 180cm x 65cm

AUSTRALIAN CHIFFON COLLECTION

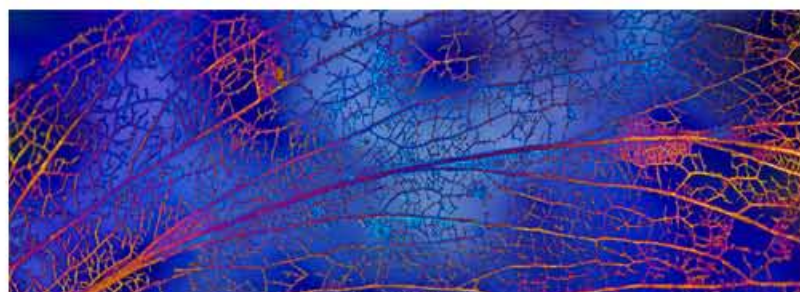


"FLYING DUCK ORCHID"
PHOTOGRAPHY: NOVEMBER 2017.

DESTINATION: AUSTRALIA, VICTORIA, GREAT OCEAN ROAD, ANGLESEA.

SUBJECT: THE FLYING DUCK ORCHID (CALEANA MAJOR).

RESEMBLING A DUCK IN FLIGHT THIS TINY AMAZING FLOWER AROUND 15MM LONG IS FOUND IN HEATHLAND IN EASTERN AUSTRALIA MOSTLY DURING SPRING.
BYCH-014

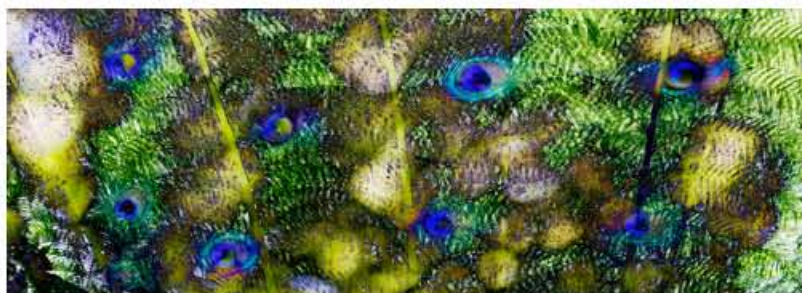


"LEAF'S WEB"
PHOTOGRAPHY: SEPTEMBER 2017.

DESTINATION: AUSTRALIA, VICTORIA, GREAT OCEAN ROAD, ANGLESEA.

SUBJECT: LEAF OF THE NATIVE EUCALYPTUS TREE (EUCALYPTUS OBLIQUA).

THE TISSUE OF THIS NORMALLY GLOSSY GREEN LEAF HAS BEEN DAMAGED BY BUSHFIRE THEN EATEN AWAY BY CATERPILLARS LEAVING ONLY A WEB OF VEINS. BYCH-008



"PEACOCK AMONGST THE FERNS"
PHOTOGRAPHY: DECEMBER 2016

DESTINATION: AUSTRALIA, TASMANIA, LAUNCESTON, CATARACT GORGE.

SUBJECT: PEACOCK AND TREE FERNS.

THE INDIAN PEACOCK HAS IRIDESCENT BLUE AND GREEN PLUMAGE WHICH HE DISPLAYS AS PART OF HIS COURTSHIP RITUAL. PEAFOWL WERE INTRODUCED TO AUSTRALIA IN THE 19TH CENTURY..

DICKSONIA ANTARCTICA IS A SPECIES OF EVERGREEN TREE FERN NATIVE TO EASTERN AUSTRALIA.
BYCH-013



"PINK TREE FERN":

PHOTOGRAPHY: DECEMBER 2016

DESTINATION: AUSTRALIA, VICTORIA, ALPINE SHIRE, HARRIETVILLE.

SUBJECT: DICKSONIA ANTARCTICA TREE FERN.

DICKSONIA ANTARCTICA IS A SPECIES OF EVERGREEN TREE FERN NATIVE TO EASTERN AUSTRALIA.

WHILST THE IDEA OF A PINK TREE FERN SEEMS UNLIKELY ACTUALLY OTHER SPECIES OF TREE FERNS NATIVE TO AUSTRALIA KNOWN AS COOPER'S TREE FERN (YATHEA COOPER) CAN BE RARELY FOUND IN THE COLOUR OF PALE PINK WITH AN ORANGE STRIPE GOING DOWN THE MIDDLE.
BYCH-009



"EUCALYPTUS BARK"

PHOTOGRAPHY: DECEMBER 2015

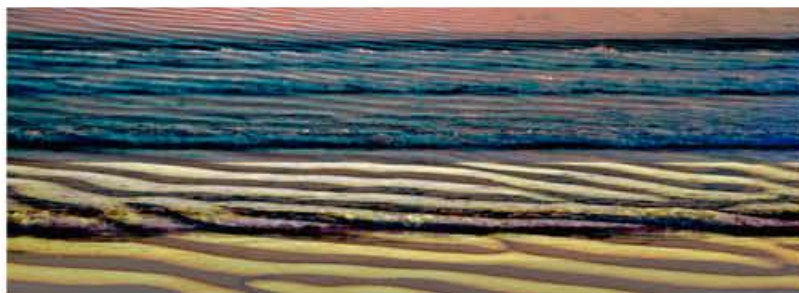
DESTINATION: AUSTRALIA, VICTORIA, FALLS CREEK.

SUBJECT: IRONBARK.

EUCALYPTUS IS A DIVERSE GENUS OF FLOWERING TREES AND SHRUBS WHICH DOMINATE THE TREE FLORA OF AUSTRALIA. THE APPEARANCE OF THE EUCALYPTUS BARK VARIES WITH THE AGE OF THE PLANT, THE MANNER OF BARK SHED, THE LENGTH OF THE BARK FIBRE, THE DEGREE OF FURROWING, THICKNESS, HARDNESS, AND COLOUR. MATURE EUCALYPTS PUT ON AN ANNUAL LAYER OF BARK WHICH INCREASES THE DIAMETER OF THE TREE STEM.
BYCH-007

SIZE 180cm x 65cm

AUSTRALIAN CHIFFON COLLECTION



"WAVES":

PHOTOGRAPHY: APRIL 2017

DESTINATION: AUSTRALIA, VICTORIA, GIPPSLAND, WILSONS PROMONTORY, SANDY POINT.

SUBJECT: SOUTHERN OCEAN WAVES ROLLING OVER THE SAND. THE SMOOTH UNDULATIONS OF THE SAND MERGE WITH THE REPETITIVE REGULARITY OF THE WAVES.

WILSONS PROMONTORY NATIONAL PARK ON A PENINSULA SOUTHEAST OF MELBOURNE, IS KNOWN FOR ITS PRISTINE BEACHES, RAINFORESTS, MOUNTAIN PEAKS AND ABUNDANT WILDLIFE. IT IS THE SOUTHERN MOST POINT ON THE AUSTRALIAN MAINLAND. WITH SOME 10,000 BEACHES AUSTRALIAN BEACH CULTURE SEES THE MAJORITY OF THE COUNTRIES' POPULATION LIVING CLOSE TO THE COASTLINE. BYCH016



"SPIRAL SHELL"

PHOTOGRAPHY: DECEMBER 2016

DESTINATION: AUSTRALIA, TASMANIA, FREYCINET PENINSULA.

SUBJECT: SPARKLING WATER AND TURBO SHELL.

ABOUT 50 TURBO SHELL SPECIES ARE KNOWN. TURBO MARMORATUS IS THE LARGEST SHELL IN THE GROUP. THE WAVY TURBO UNDULATUS (KNOWN AS AUSTRALIAN SERPENTS SKIN) IS ORNAMENTED WITH LONGITUDINAL WAVING FLEXIBLE LINES OF GREEN OR GREENISH VIOLET.

BYCH-015



"THE GAMES STAMPS":

PHOTOGRAPHY: MARCH 2017

DESTINATION: AUSTRALIA.

SUBJECT: THE STAMPS CELEBRATING THE OLYMPIC AND COMMONWEALTH GAMES.

THE FIRST AUSTRALIAN OLYMPIC THEMED STAMPS DEPICTING MELBOURNE CITYSCAPES WERE ISSUED TO CELEBRATE THE 1956 OLYMPICS. IN 1962 A SET OF TWO STAMPS WERE ISSUED FOR THE COMMONWEALTH GAMES IN PERTH, ONE FEATURING NATIVE FLORA A KANGAROO PAW AND THE OTHER THE COAT OF ARMS OF PERTH.

BYCH-017



"STAMPS FROM THE PAST"

PHOTOGRAPHY: MARCH 2017

DESTINATION: AUSTRALIA.

SUBJECT: COLLECTION OF EARLY STAMPS.

FROM 1850 UNTIL 1913 AUSTRALIAN STATES ISSUED THEIR OWN INDIVIDUAL POSTAGE STAMPS. MOST PORTRAYED PORTRAITS OF QUEEN VICTORIA.

THE EARLY TASMANIAN ISSUES FEATURED THE STATE'S NAME GIVEN BY DUTCH EXPLORER ABEL TASMAN IN 1642. HE TITLED THE LAND 'VAN DIEMEN'S LAND' TO HONOUR HIS PATRON ANTHONY VAN DIEMEN.

BYCH-018



"AUSSIE BUSH MATES"

"AUSSIE BUSH MATES"

PHOTOGRAPHY: 2010, 2012 AND 2015.

DESTINATION: AUSTRALIA, VICTORIA.

LEFT: EASTERN GREY KANGAROO - MIDDLE: KOALA - RIGHT: EMU AND CHICKS.

SUBJECT: ICONIC AUSTRALIAN ANIMALS.

THE KANGAROO AND KOALA ARE MARSUPIALS CARRYING THEIR YOUNG IN A POUCH.

EARLY EXPLORERS DESCRIBED THEM AS CREATURES WITH HEADS LIKE DEER, STANDING UPRIGHT LIKE MEN, AND HOPPING LIKE FROGS! KOALAS WERE DESCRIBED AS "NEW HOLLAND SLOTHS, TORPID, SENSELESS CREATURES VOID OF ELEGANCE". EMUS ARE THE SECOND LARGEST LIVING BIRD. IN ABORIGINAL MYTHOLOGY, A CREATION MYTH SAYS THAT THE SUN WAS MADE BY THROWING AN EMU'S EGG INTO THE SKYRDS AND KANGAROOS ARE OFTEN REFERRED TO AS "ROOS." BYCH-001 //BYCH-002



"OUTBACK AUSSIE BUSH MATES"

"WARRUMBUNGLE KANGAS"

PHOTOGRAPHY: SEPTEMBER 2011

DESTINATION: AUSTRALIA, NEW SOUTH WALES, WARRUMBUNGLE NATIONAL PARK.

SUBJECT: KANGAROOS GRAZING.

THE WARRUMBUNGLE NATIONAL PARK IS ABUNDANT WITH NATIVE AUSTRALIAN WILDLIFE. THE EASTERN GREY KANGAROO IS AN ICONIC MARSUPIAL MAMMAL LIVING IN MOBS OF 10 OR MORE. IT IS FOUND OVER MOST OF THE EASTERN STATES IN HABITATS RANGING FROM SEMI-ARID SCRUB TO WOODLANDS. "AUSSIES" LIKE TO SHORTEN WORDS AND KANGAROOS ARE OFTEN REFERRED TO AS "ROOS."

BYCH-020



"PLATYPUS MAGIC"

PHOTOGRAPHY: DECEMBER 2016

DESTINATION: AUSTRALIA, TASMANIA, BEAUTY POINT, PLATYPUS HOUSE.

SUBJECT: PLATYPUSES

SWIMMING UNDERWATER.

THE SEMI-AQUATIC PLATYPUS, WITH ITS DUCKBILL AND WEBBED FEET, IS AN AMAZING AUSTRALIAN ANIMAL. THE ECHIDNA IS THE ONLY OTHER MONOTREME OR EGG-LAYING MAMMAL. HABITATS ARE STREAMS WITH EARTH BANKS, ROOTS AND OVERHANGING VEGETATION - A MAGIC WORLD! THANK YOU PLATYPUS HOUSE FOR ASSISTANCE WITH THE PHOTOGRAPHY. BYCH-006





Cloudehill Seasons H
BYHA-019



Cloudehill Colours H
BYHA-001



Thryptomene H
BYHA-012



Opal H
BYHA-510



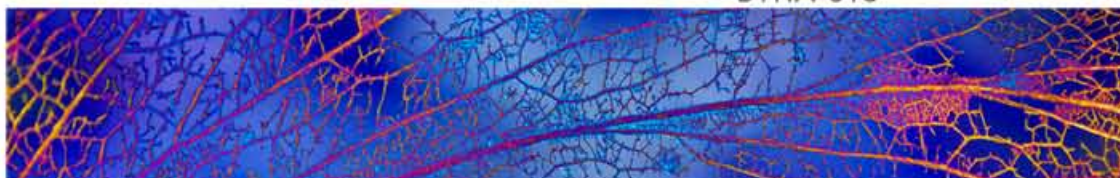
Fairy Wren H
BYHA-005



Kangaroo Paw H
BYHA-002



Peacock H
BYHA-013



Leaf H
BYHA-008



Kangas H
BYHA-004



Outback Red H
BYHA-003



Karri Trees H
BYHA-006

AUSTRALIAN TABBY COLLECTION

Quokka
BYTA-012



Early Morning Roos
BYTA-009

Pastoral Country
BYTA-002



Ned Kelly
BYTA-010

Cloudehill Colours
BYTA-001



Hidden Koalas
BYTA-004

Puffing Billy
BYTA-013



SIZE 150cm x 50cm



Mythical King Parrots
BYTA-007

Lacework
BYTA-005



Stamps from the Past
BYTA-018



Trestle Bridge
BYTA-006



Sea Stars
BYTA-003



Convent Style
BYTA-008



AUSTRALIAN TWILL COLLECTION



"Wild Black Swans"

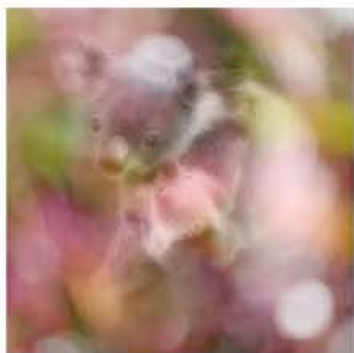
PHOTOGRAPHY: October 1981.
DESTINATION: Eastern Australia.
SUBJECT: Kangaroos "Boxing".
STORY:

The Eastern Grey Kangaroo is an iconic marsupial mammal living in mobs of 10 or more. Kangaroos engage in "boxing" over mating rites and other mostly territorial disputes.

During a "boxing" bout, a kangaroo can actually balance his entire body on his tail, kicking forward with his powerful legs.

The "boxing" kangaroo has become a national symbol for Australia particularly at sporting events.

"Aussies" like to shorten words and Kangaroos are often referred to as "Roo's" or "Kangas".
BYSQ-305



"Koala and Joey 1"



"Koala and Joey 2"

PHOTOGRAPHY: November 2019
DESTINATION: Torquay wetlands, Victoria, Australia.
SUBJECT: The meeting of two beautiful Wild Black Swans
STORY:

The Black Swan is a large waterbird with black plumage, except for its wingtips and red bill. It is native to Australia, breeding mainly in the southeast and southwest and is a national icon, as well as being the state bird of Western Australia.

Swans are symbols for many beautiful qualities such as grace, purity, love and freedom and Black Swans are also linked to occult symbolism. Swans usually mate for life and only when a partner dies may they take up another partner.

This scarf design, with its white background, highlights a special moment captured on of the swans embodying the spirit of love. BYSQ-301



"Boxing Kangas"

PHOTOGRAPHY: August 2008.
DESTINATION: Eastern Australia.
SUBJECT: Mother Koalas and Joey (Baby Koala).
STORY:

Koalas are one of the world's most iconic animals and are found exclusively in Australia.

The Koala is an arboreal herbivorous marsupial dining almost solely on eucalyptus leaves.

Koalas give birth to immature young that crawl into their mothers pouches and stay for around six months.

Having a low nutrition diet Koalas sleep about 18 hours a day.

Along with the Kangaroo the Koala is recognized as a symbol of Australia.

Koalas are well camouflaged in their natural habitat among the trees and leaves. BYSQ-302/303

SIZE 45cm x 45cm



"Fairy Wren"

Photography: November 2017.

Destination: Australia, Victoria, Great Ocean Road, Anglesea.

Unrelated to the true Wren and common in the undergrowth of Eastern Australia the male is mostly blue with black bands (earning the name Blue Wren).

The blue turns iridescent during breeding time.

BYSQ-304

SIZE 110cm x 110cm



"Diamond Bubbles"

Photography: January 2020.

Destination: Waratah Bay, Bass Strait, South West Gippsland, Victoria, Australia.

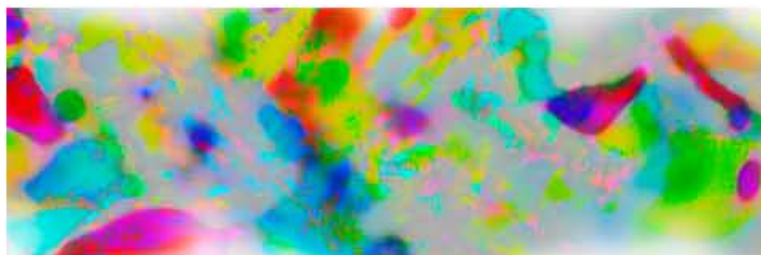
Bass Strait is the channel separating the Australian Mainland and Tasmania with the Pacific Ocean to the East and the Indian Ocean to the West.

The rugged Southern Coast of Australia has seen many a shipwreck in bygone days.

As waves come crashing to the shoreline tiny air bubbles form.

In this case the air bubbles formed as the Ocean waves were breaking against the rocky coastline. Like waves these bubbles are in constant flux creating ever changing patterns and these magical patterns are the essence of this scarf. BYTW-112

AUSTRALIAN TWILL COLLECTION



"Opal"

Photography: October 2019

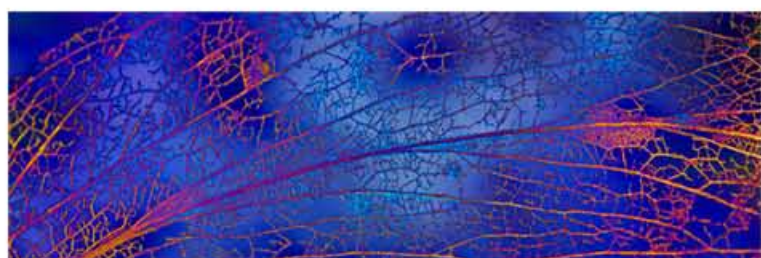
Destination: Lightning Ridge, NSW, Australia

Opal is the national gemstone of Australia.

Precious opal shows an amazing interplay of internal colours - and can display nearly all of the visible spectrum. In antiquity opal was rare and very valuable and through Europe it was a gem prized by royalty.

The towns of Coober Pedy and Andamooka in South Australia and Lightning Ridge in New South Wales, are major sources of Australian opal.

The opal used for this scarf was purchased as a small gift however close-up photography revealed a display of vibrant colours which surprisingly created the attractive design.
BYTW-510



"Gum Leaf"

Photography: September 2017.

Destination: Australia, Victoria, Great Ocean Road, Anglesea.

Subject: Leaf of the native Eucalyptus Tree (Eucalyptus obliqua).

The tissue of this normally glossy green leaf has been damaged by bushfire then eaten away by caterpillars leaving only a web of veins.
BYTW-512



"Kangaroo Paw"

Photography : November 2020

Destination : Geelong, Australia

Kangaroo paw (Anigozanthos) is a genus of flowering plants that are native to Australia. The bloom varies in colour among different species with red, yellow, pink, green, orange and even brown varieties. The tubular flower has a velvety fuzz like an animal's paw. Although its natural range is restricted, it has now been introduced as a garden plant in world locations such as the United States. The Kangaroo Paw is the official floral emblem of Western Australia where it has grown for millions of years. The pink/redish flower was chosen for this scarf blending the outback colours of the Australian bush with the stunning sheen of the Silk Twill weave.

BYTW-501



"Platypus"

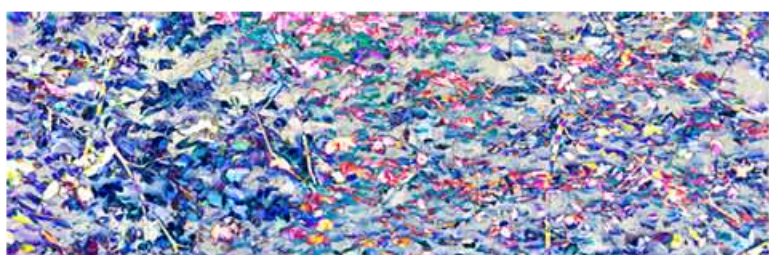
Photography: December 2016

Destination: Australia, Tasmania, Beauty Point, Platypus House.

Subject: Platypuses swimming underwater.

The semi-aquatic platypus, with its duckbill and webbed feet, is an amazing Australian animal. The Echidna is the only other Monotreme or egg-laying mammal. Habitats are streams with earth banks, roots and overhanging vegetation - a magic world! Thank you Platypus House for assistance with the photography.

BYTW-515



"Cloudehill":

Image Capture: August and November 2017.

Destination: Dandenong Ranges, Victoria, Australia

Subject: Cloudehill Gardens.

Cloudehill Gardens is a cool climate garden in the Dandenong Ranges created by Jeremy Francis from a bulb and foliage farm started by the Woolrich family in 1920. Here you will find glorious historic Beech and Maple trees, ancient Rhododendrons and summer flower borders.

Images for this beautiful scarf are a collage taken over several seasons.
BYTW-517



"PARIS MONTAGE"

PHOTOGRAPHY: JULY 1993, AUG 1999.

DESTINATION: PARIS, FRANCE.

SUBJECT: PARIS MONUMENTS.

LEFT: ARC DE TRIOMPHE.

CENTRE: THE LOUVRE AND PYRAMIDS BEHIND THE EIFFEL TOWER.

RIGHT: NOTRE DAME CATHEDRAL.

BACKGROUND: MONTMARTRE (ARTISTS QUARTER).

PARIS, FRANCE'S CAPITAL IS A GLOBAL CENTRE FOR ART, FASHION, FOOD AND CULTURE.

WIDE BOULEVARDS AND THE RIVER SEINE CRISSCROSS THE 19TH-CENTURY CITYSCAPE.

IT IS ALSO FAMOUS FOR ITS CAFE CULTURE AND DESIGNER BOUTIQUES. THE ARTWORK FOR THIS SCARF COMBINED MANY PHOTOS TO CREATE A MONTAGE OF THE COMPLEX AND DIVERSE PARISIAN ARCHITECTURE IN A SINGLE ELEGANT AND COLOURFUL DESIGN.

BYCH-107



"SAKURA"

PHOTOGRAPHY: APRIL 1998, NOV/DEC 1999.

DESTINATION: JAPAN, MT FUJI.

SUBJECT: MT FUJI, CHERRY BLOSSOMS AND THE KIMONO.

AN ACTIVE VOLCANO, MT. FUJI RISES 3776M. MT FUJI IS COMMONLY CALLED FUJI-SAN IN LINE WITH ITS SACRED STATUS IN JAPAN.

CHERRY BLOSSOMS (SAKURA) ARE JAPAN'S NATIONAL FLOWER AND BLOOM WITH THE APPROACH OF WARMER WEATHER PROGRESSIVELY NORTHWARDS FROM THE SOUTH OF JAPAN.

THE KIMONO IS THE TRADITIONAL JAPANESE GARMENT MOSTLY WORN BY WOMAN ON SPECIAL OCCASIONS.

MT FUJI, CHERRY BLOSSOMS AND THE KIMONO ARE THREE OF THE MOST POWERFUL TRADITIONAL ICONS OF JAPAN.

BYCH-106



"THE FLOATING CITY"

PHOTOGRAPHY: JULY 1995

DESTINATION: VENICE, ITALY.

SUBJECT: GONDOLA ON THE GRAND CANAL.

THE FLOATING CITY OF VENICE WAS FIRST SETTLED ABOUT 400AD. PERHAPS THE MOST EXTRAORDINARY AND BEAUTIFUL CITY IN THE WORLD IT IS BUILT AROUND 118 ISLANDS THAT ARE SEPARATED BY CANALS AND LINKED BY MORE THAN 400 BRIDGES. FROM THE 13TH CENTURY TO THE 19TH CENTURY THE CITY WAS A CENTRE FOR TRADING IN SILK, GRAIN AND SPICE. THE GONDOLA HAS EXISTED IN VENICE SINCE THE 11TH CENTURY. AROUND THE 14TH CENTURY IT IS ESTIMATED SOME 10,000 GONDOLAS TRAVERSED THE VENETIAN CANALS. TODAY APPROXIMATELY 400 REMAIN SERVING TOURISTS AND LOCALS.

BYCH-110



"NYHAVN"

PHOTOGRAPHY: OCTOBER 1981

DESTINATION: DENMARK, COPENHAGEN, NYHAVN.

SUBJECT: 17TH CENTURY TOWNHOUSES AND HISTORICAL WOODEN SHIPS.

NYHAVN IS A 17TH CENTURY CANAL DISTRICT IN COPENHAGEN, DENMARK.

BUILT BY SWEDISH PRISONERS FROM THE DANISH-SWEDISH WAR IN 1658 IT IS LINED BY 17TH AND 18TH CENTURY BARS, CAFES AND RESTAURANTS. DURING THIS TIME IT WAS NOTORIOUS AS A SAILOR'S DRINKING AND ENTERTAINMENT DISTRICT.

BYCH-104



"GANYMEDE"

PHOTOGRAPHY: OCTOBER 2010

DESTINATION: TUNISIA, EL DJEM (ANCIENT THRYSDRUS).
SUBJECT: THE ANCIENT ROMAN MOSAIC IN THE EL DJEM MUSEUM FROM THE 2ND CENTURY TITLED "THE RAPE OF GANYMEDE".

IN GREEK MYTHOLOGY GANYMEDE BEING THE MOST BEAUTIFUL OF THE MORTALS WAS ABDUCTED BY THE EAGLE OF THE GREEK GOD ZEUS AND TAKEN TO THE HOME OF THE GODS AT MOUNT OLYMPUS.

HE WAS THEN GIVEN ETERNAL YOUTH AND IMMORTALITY, AND SERVED AS THE CUPBEARER TO THE GODS.

BYCH-108



"DOLPHIN"

PHOTOGRAPHY: OCTOBER 2010

DESTINATION: TUNISIA, EL DJEM (ANCIENT THRYSDRUS).

SUBJECT: ROMAN MOSAIC FEATURING DOLPHINS.

WHILE EL DJEM IS MOST FAMOUS FOR IT'S ANCIENT ROMAN AMPHITHEATER, THE ARCHEOLOGICAL MUSEUM OF EL DJEM HOUSES A UNIQUE COLLECTION OF ROMAN MOSAICS DATING FROM THE 3RD CENTURY AD.

THESE MOSAICS MOSTLY DEPICT MYTHOLOGICAL PERSONAGES, ABSTRACT ELEMENTS AND FAUNA.

THE DOLPHIN IMAGE FROM THE HOUSE OF DOLPHINS IS FROM A MOSAIC OF A NYMPH LYING ON A SEA HORSE ACCOMPANIED BY TWO DOLPHINS.

BYCH-109



"HARVEST"

PHOTOGRAPHY: DECEMBER 1990

DESTINATION: EGYPT, LUXOR, WEST BANK, DEIR EL-MEDINA.

SUBJECT: WALL RELIEFS IN THE TOMB OF THE ARTISAN SENNEJEM.

SENNEJEM WAS A MEMBER OF THE CREW OF ARTISANS WHO DECORATED THE ROYAL TOMBS OF THE 19TH DYNASTY NEW KINGDOM (1200BC). THE EAST WALL PAINTING "THE FIELDS OF THE NETHERWORLD" DEPICTS THE AFTERLIFE FOR SENNEJEM AND HIS WIFE LYNEFERTI. THEY ARE SHOWN HARVESTING GRAIN, SOWING SEEDS AND PULLING FLAX IN THE ABUNDANT FIELDS OF THE NEXT WORLD.

BYCH-103

INTERNATIONAL TWILL COLLECTION



Paris Night BYSQ-207

PHOTOGRAPHY: August 1993.

DESTINATION: Paris, France.

SUBJECT: Aspects of Paris by Night

STORY:

A montage of Paris night images highlighted by the Moulin Rouge Cabaret.

Moulin Rouge has exemplified the Paris party spirit since its founding by Charles Zidler and Joseph Olier in 1889.

An energetic and provocative dance known as the French Cancan is synonymous with Moulin Rouge.

The montage also comprises the most famous Paris avenue, Champs-Élysées sign, together with the "Le Metro" (underground) map and the historic Louvre Museum station entrance.



Eye of Horus BYSQ-201

PHOTOGRAPHY: November 1989.

DESTINATION: West Bank of the Nile, Dier el-Medina Luxor, Egypt.

SUBJECT: Eye of Horus symbol from the tomb of the Artisan Sennedjem (3200 years old)

STORY:

Osiris, one of ancient Egypt's most important deities was God of the Underworld and is presented standing in a kiosk with the eye of Horus on either side. The background from the same tomb features "The Fields of the Netherworld", highlighting aspects of rural life.

The eye of Horus, also known as left wedjat eye or udjat eye was believed to have protective magical powers in Ancient Egypt.

The tomb of the Artisan Sennedjem was discovered by Egyptian workers in 1886.



Hagoita BYSQ-206

PHOTOGRAPHY: October 1992.

DESTINATION: Asakusa, Tokyo, Japan.

SUBJECT: Image of a Japanese lady in traditional kimono as depicted on a wooden paddle known as a Hagoita.

STORY:

A Hagoita is a wooden paddle used to play the new year girls game Hanetsuki.

Hanetsuki is believed to have originated some 1300 years ago and is played in a similar way to badminton but without a net. Girls use a coloured "shuttlecock" known as a hane.

The Hagoita is believed to swat away evil spirits and is often given as a gift for a newborn girl

Behind an array of Japanese Cherry Blossoms (Sakura) the design depicts possibly a Maiko or geisha in traditional costume.



Mykonos BYSQ-204

PHOTOGRAPHY: May 1987.

DESTINATION: Mykonos, Greece.

SUBJECT: Town view depicting four windmills.

STORY:

Mykonos is an island in the Cyclades group in the Aegean Sea, it measures about 85 square kilometres.

Mykonos attracts tourists from all walks of life as it has a reputation as a paradise with no rules.

In Greek mythology Mykonos was supposedly where Zeus battled the Titans and also where Hercules killed the Giants.

Currently there are sixteen surviving windmills on the island most of which were built by the Venetians in the 16th. Century.

"Fez"

Photography Dec 2010

Destination: Fez, Morocco.

Subject: Moorish Architecture.

Fez or Fes, the oldest imperial city in Morocco, has an amazing labyrinth like Medina (Fes El Bali) dating back to the 9th century! It is a UNESCO World Heritage site and the spiritual capital of Morocco.

This scarf, in burnt orange with Moroccan blue decorative features, highlights the honeycombed medieval "Moorish" architecture, and old-world atmosphere of this inimitable city.

BYTW-513



"Hieroglyphs"

Photography: November 1989.

Destination: Valley of the Kings, West Bank of the Nile, Luxor, Egypt.

Subject: Ancient Egyptian Paintings in the Tombs of Pharaohs, Ramses I and Horemheb.

The design is based on images taken from the two Pharaohs Tombs highlighting the ancient Egyptian writing known as Hieroglyphs.

Ramses I was the founding Pharaoh of Egypt's 19th. Dynasty. Following his short reign (1292BC to 1290BC) a further 10 Ramesses adopted his name.

Elements were added to the design from the brightly painted Tomb of Horemheb (1319BC to 1292BC), the last Pharaoh of the 18th Dynasty.

The early 1900's excavators were enchanted by the rich colours of these painted bas-reliefs.

The artwork for this scarf features many elements of the Ancient Egyptian story.

BYTW-511



"Dolphin Mosaic"

Photography: October 2010

Destination: Tunisia, EL Djem (Ancient Thrysdrus).

Subject: Roman Mosaic featuring Dolphins.

While EL Djem is most famous for its Ancient Roman Amphitheater, the archeological museum of EL Djem houses a unique collection of Roman Mosaics dating from the 3rd century ad.

These mosaics mostly depict mythological personages, abstract elements and fauna.

The Dolphin image from the House of Dolphins is from a mosaic of a Nymph lying on a sea horse accompanied by two Dolphins.

BYTW-502



SIZE 150cm x 50cm

"Park Güell"
Photography April 2004
Destination: Spain, Barcelona.
Subject: Gaudi Architecture.

Antoni Gaudi (1852-1926) was a Catalan architect known as the greatest exponent of Catalan Modernism. His architecture integrated crafts such as ceramics, stained glass and wrought ironwork. Between 1984 and 2005 seven of his works were declared World Heritage site by unesco. His most famous work being the church of the Sagrada Familia. Guell Park was opened to the public in 1926 after a construction time of around 15 years. The Twill Silk and design of these scarves highlight the complex patterns, character and colours of the small glossy tiles in Gaudi's Artwork.



BYTW-503

"Gaudi Mosaic"
Photography April 2004
Destination: Spain, Barcelona.
Subject: Gaudi Architecture.



BYTW-514

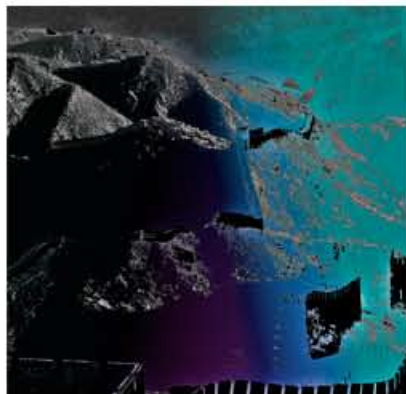
"Azulejo"
Photography: June 1990.
Destination: Portugal, Lisbon.

Azulejo pronounced r-sue-ray-o

Fronteira Palace is located in the district of Benfica Lisbon. Visitors are welcome. The Palace dating back to the mid 1600's is most famous for it's stunning gardens and Azulejos (Portugese Tiles) depicting figures personifying the arts, mythological figures as well as busts of Portuguese Kings. The Azulejos were installed in the grounds of Fronteira Palace in the late 17th. Century. The image depicts a daring adventurer of the times.



BYTW-516



"Gates of Time"

Image Capture: May 2001

Destination: China, Beijing, Great Wall

Subject: The Great Wall weaving through the mountains at Jinshanling.

An interplay of shades highlight the mountains and valleys and how The Great Wall merges with landscape. Much of the Great Wall dates from the Ming Dynasty. As well as its defensive and security functions it served as a transportation corridor and border control for regulation of trade along the Silk Road. BYTW-101

also avail : SIZE 90cm x 90cm BYTW-901



"Eternal Love"

Image Capture: April 2000

Destination: India, Agra, taj Mahal

Subject: Taj Mahal reflected in the Yamuna River.

The Taj Mahal was commissioned in 1632 by the Mughal Emperor Shah Jahan as a mausoleum for his wife Mumtaz Mahal. This monument to "undying love" is "the jewel of Muslim art in India and one of the universally admired masterpieces of the World's Heritage".

BYTW-108



"Via Condotti"

Image Capture: September 1983

Destination: Italy, Rome, Via Condotti

Subject: Via Condotti Street Scene photographed from the Spanish Steps.

Via Condotti is a busy and fashionable shopping street running up to the Piazza di Spagna fountain at the base of the Spanish Steps. In Roman times it was one of the Streets crossing the ancient Via Flaminia with access to Pincio hill. Today it is the street containing the greatest number of Rome based Italian fashion retailers, equivalent to London's Bond Street.

BYTW-110



"Dubrovnik"

Image Capture: November 2006

Destination: Croatia, Dubrovnik.

Subject: Old Town Placa.

The ancient city of Dubrovnik located on the stunning Dalmatian coast is a jewel in the Adriatic sea. The city is famous for its medieval architecture, quaint limestone streets and distinctive terracotta rooftops. The pedestrianized Strada (or Placa) is a popular place for locals and tourists and is lined with trendy shops and restaurants.

BYTW-113



"Harvest#1"

Image Capture: December 1990

Destination: Egypt, Luxor, West Bank, Deir el-Medina

Subject: Tomb of the Artisan Sennedjem.

Thirty Three Century old painting in the Tomb of the Artisan Sennedjem who was a member of the crew of artisans who carved and decorated the Royal Tombs of the 19th Dynasty New Kingdom (1200BC). In this tomb three generations of the same family were united in the same chamber.

The East Wall painting "The Fields of the Netherworld" is a scene depicting the afterlife for Sennedjem and his wife Lyneferti. They are shown harvesting grain, sowing seeds and pulling flax in the abundant fields of the next world.

BYTW-105



"Prague Orloj"

Image Capture: May 2008

Destination: Czech Republic, Prague, Old Town

Subject: Astronomical Clock or Prague Orloj.

First installed in 1410 The Medieval Prague Astronomical Clock is the oldest functioning Astronomical Clock in the world. It is mounted on the southern wall of the Town Hall in the Old Town Square. Every hour it has a clockwork show ("The Walk of the Apostles") of the Apostles and other moving sculptures as well as a skeleton representing death. It is the subject of many myths, legends and fascinating stories.

BYTW-106



"Cossack Swing"

Image Capture: May 1990

Destination: Soviet Union, Moscow, Red Square

Subject: Cossack Dancers in Traditional Costumes dancing in Red Square.

The Cossack Dance is a Ukrainian Dance, originally an all male affair to reflect manliness and heroism after successful battles. In the 18th Century the dance survived in mixed gender village form as a celebratory dance. The dance has many movements performed in unison, especially by female dancers in colourful costumes.

BYTW-102



"Ganymede Mosaic"

Image Capture: October 2010

Destination: Tunisia, El Djem (Ancient Thysdrus)

Subject: The Ancient Roman Mosaic (Titled "The Rape of Ganymede") in the El Djem Museum from the 2nd. Century

In Greek Mythology Ganymede being the most beautiful of the mortals was abducted by the eagle of the Greek God Zeus and taken to the home of the Gods at Mount Olympus. He was then given eternal youth and immortality and served as the cupbearer to the Gods.

BYTW-115