



ASTELLITE

German uPVC Window and Door Systems



Energy efficient window & doors
with aluplast-technology
www.astellite.com.au



Proudly Featured On

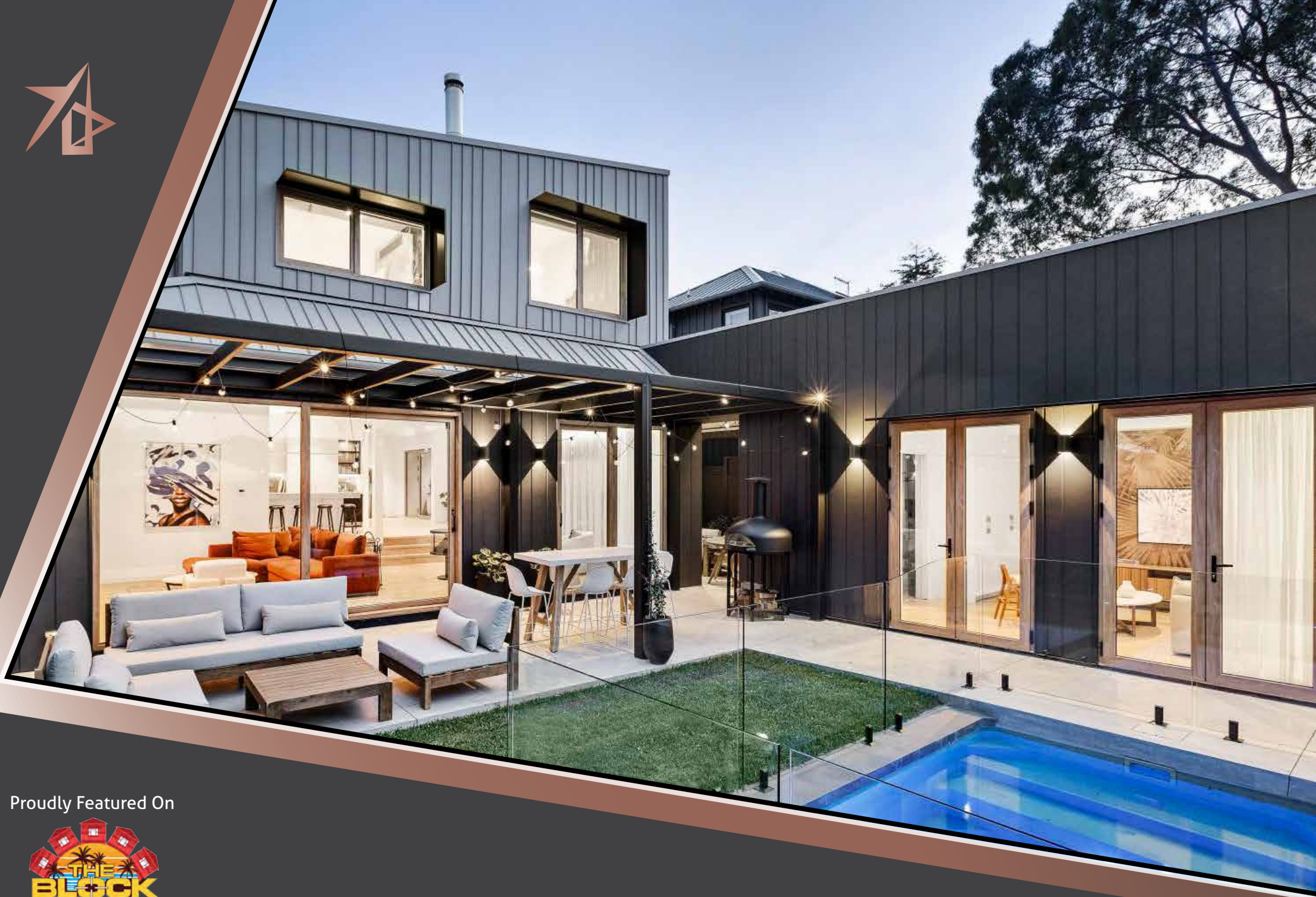


2022 - 2023



Service and finest quality

Experience the next generation of uPVC windows and doors opening the world of German precision and encompassing flawless service. At Astellite uPVC Windows and Doors, we are committed to designing products that perfectly suit the Australian lifestyle and Melbourne climate. Whether you are a builder, renovator, homeowner, or architect, rest assured that choosing Astellite uPVC Windows and Doors is the right decision. Your satisfaction is our priority, and we will go above and beyond to ensure you are delighted with your purchase.



Proudly Featured On



2022 - 2023



Our deliverance and commitment

With a combined industry experience of over 20 years, our team specializes in the world of German uPVC doors and windows. This exceptional pioneer of upvc knowledge, Rudi empowers us to meticulously curate the finest design of each for each uPVC project, ensuring nothing but the best. Damian's architectural background makes him the perfect guide to help you find the ideal door and window solution that perfectly complements your design vision. What truly sets our installation team apart is their wealth of experience that spans across Europe. This vast and diverse background enables them to deliver a level of workmanship and installation procedures that reach the pinnacle of excellence. When you choose us, you're not just getting a team; you're gaining access to a legacy of unparalleled skill and craftsmanship.



aluplast[®] IID 2023
Melbourne, Australia

MANFRED J. SEITZ HONORARY ACHIEVEMENT



Awards

Astellite have been nominated for the prestigious Aluplast Honorary Achievement and Awards, held on March 7th, 2023. This esteemed recognition is a testament to their outstanding contributions to the industry and their relentless pursuit of excellence.

Founding Astellite doors and windows, Lucas and Peter have led the company to remarkable heights, responding to the growing demand for window replacement and elevating the standard of living. Their unwavering work ethics and charismatic personalities have not only fueled the success of their business but have also played a pivotal role in driving better sustainability practices throughout the country.





Custom windows

Unleash Your Vision with Custom-Made Windows:

At Astellite, we understand that every space is unique, and that's why we specialize in crafting custom windows tailored to your specific needs and preferences. Whether you're seeking to elevate your residential home or upgrade your commercial property, our team of experts is here to bring your vision to life.



Tilt and turn windows

Step into the realm of architectural ingenuity with the Tilt and Turn Windows, Europe's beloved window type that has taken the continent by storm. Prepare to be captivated by its multifaceted design and the myriad benefits it offers.



Tilt and turn windows

Breathe in the Freshness: Imagine a window that not only grants you two unique openings but also enhances ventilation and cleaning capabilities. The Tilt and Turn Windows provide an unrivalled solution, particularly for double-story houses. Gone are the days of wrestling with ladders or struggling to access hard-to-reach areas. With its user-friendly design, cleaning becomes a breeze, while ensuring optimal air circulation throughout your home.



Tilt and turn windows

Unparalleled Efficiency and Tranquillity: Energy efficiency and noise reduction take centre stage with the Tilt and Turn Window's advanced multipoint locking system. Your abode becomes a haven of tranquillity, shielding you from the outside world. Embrace the serenity of a noise-free environment while revelling in the energy savings that this remarkable window type brings.



Awning windows

Step into the realm of architectural ingenuity with the Tilt and Turn. If you're considering the addition of awning windows to your property, look no further than Astellite—the premier supplier of top-of-the-line window systems in Melbourne. Through the cutting-edge technology of Aluplast, we bring you unparalleled quality uPVC windows that are built to endure the test of time.



Bay Windows

Elevate Your Space with Astellite's Exceptional Bay Windows

Transform your home with the beauty and functionality of double-glazed bay windows.

At Astellite, we understand the importance of maximizing natural light, optimizing views, and creating a sense of spaciousness.



Swinging and French Doors

French doors and swinging doors, offer upto 7-point locking system for enhanced security and energy efficiency, Say goodbye to aluminium Timber French and Swinging doors that lack sealing and thermal performance. Our cutting-edge double-glazed uPVC windows and frames, manufactured right here in Australia, are designed to withstand the tough Aussie climate.



Front Doors

Discover Endless Door Possibilities for Your Home with Astellite Our Offering Covers Every Door Configuration Imaginable: Residential or Commercial Products Tailored to Your Vision. Visit our Chelsea Showroom and Unlock a World of Inspiration



Front Doors

Our commitment to top-quality uPVC materials and precision engineering guarantees robust security without compromising on aesthetics.

But the advantages don't stop there. Astellite's doors are designed to optimize energy efficiency, delivering remarkable thermal benefits that keep your home comfortable and energy bills in check. Experience a living space that maintains the perfect temperature year-round, enhancing your overall comfort and reducing environmental impact.



Smart Slide

Experience the pinnacle of sliding door technology with Astellite's ultimate "all-rounder," our Smart Slide system. Our sliding doors are unparalleled in Melbourne, offering a combination of acoustic performance, airtightness, ease of use, and exceptional thermal performance that surpasses competitors at this price point.



Smart Slide

With an innovative 8-point locking mechanism and high-quality sealing surfaces, our Smart Slide doors deliver an excellent seal around the entire door, ensuring optimal insulation and energy efficiency.



Lift and Slide

Indulge in the breathtaking view and impressive height of Astellite's Lift and Sliding Door system, reaching up to 3.0 meters in height for a single door and up to an astounding 12 meters length for the entire double door system.



Lift and Slide

Experience a seamless transition from indoors to outdoors with this barrier-free door system. Its smooth and effortless operation, controlled with just a fingertip.

The Aluplast Lift and Sliding Door system has been rigorously tested under extreme conditions, from driving rain to storms and harsh weather.



Tilt and Slide

Our Doors system takes convenience and security to the next level providing a window and door opening in one system. Enjoy day and night ventilation with the tilt function.



Tilt and Slide



Bi Folding Doors

Elevate your entertaining experience with Astellite's exceptional Bifold doors allowing up to 100% opening. Designed to seamlessly blend the inside and outside of your home. Our easy to operate modern, elegant, and functional Bifold doors that enhance the appearance of your home while maximizing space.

Our Bifold doors smoothly slide with multi-point locking system.



Showroom

Bringing European Excellence to Australian Homes
Elevate Your Living with German Technology!

418 Nepean Hwy, Chelsea 3196 Victoria Australia • 1300 48 88 48 • www.astellite.com.au



Showroom

Bringing European Excellence to Australian Homes
Elevate Your Living with German Technology!

418 Nepean Hwy, Chelsea 3196 Victoria Australia • 1300 48 88 48 • www.astellite.com.au



FIXED GLAZING

The glazing is inserted directly into the frame – there is no sash that could be opened.



CASEMENT - OUTWARD OPENING

The sash is to be opened outwards.



STACKER DOOR

The sash can be slid to the side to open the window. Multiple sashes can be used to stack



TILT-AND-SLIDE

The sash can be tilted and slid to one side to open the window.



BI FOLDING DOOR

The sashes can be folded, each running along a runner rail.



TILT-AND-TURN FUNCTION

The window can be opened to the inside like a casement and it can be tilted.



AWNING – OPENING OUTWARD

The window can be opened to the inside and it can be tilted.



SMART-SLIDE

The sash is shifted off the gasket horizontally and slides, providing superior tightness against weather and noise. Multiple sashes can be used to stack



LIFT-SLIDE

The sash is lifted vertically off the gasket and can slide the largest panels with ease.



FRENCH DOORS

Many combinations available.



ENTRY DOOR

- BAY WINDOWS
- MOTORISED WINDOWS
- ARCHED WINDOWS
- HUGE RANGE OF COLOURS



TURNER OAK MALT



TURNER OAK COFFEE



SHEFFIELD OAK CONCRETE

Bringing European Excellence to Australian Homes
Elevate Your Living with German Technology!

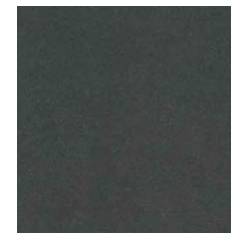
418 Nepean Hwy, Chelsea 3196 Victoria Australia • 1300 48 88 48 • www.astellite.com.au



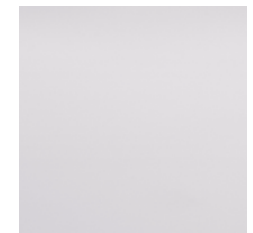
TURNER OAK MALT



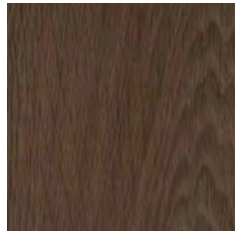
ANTHRACITE GREY



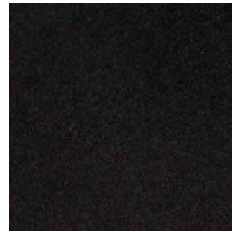
BASALT GREY



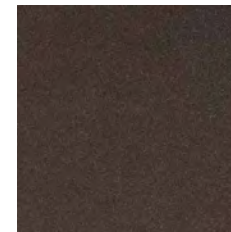
ALUDEC TRAFFIC
WHITE



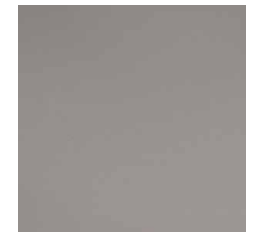
TURNER OAK COFFEE



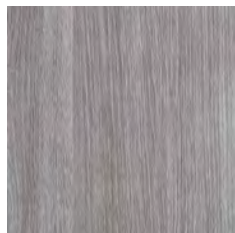
JET BLACK



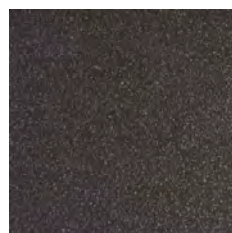
UMBRA GREY



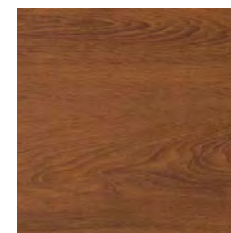
WINDOW GREY



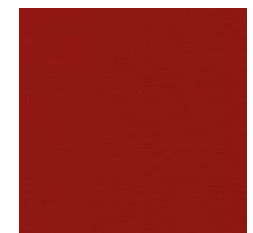
SHEFFIELD OAK CONCRETE



ALUDEC DB703

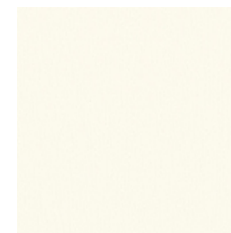


WALNUT

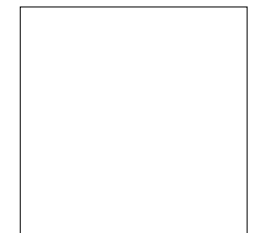


RED

25 + more special order colours to choose from



CREME



TROPICAL
WHITE

COLOUR SELECTION

Bringing European Excellence to Australian Homes - Elevate Your Living with German Technology!

418 Nepean Hwy, Chelsea 3196 Victoria Australia • 1300 48 88 48 • www.astellite.com.au



ASTELLITE

German uPVC Window and Door Systems



418 Nepean Hwy

Chelsea 3196 Victoria Australia

1300 48 88 48

www.astellite.com.au

