

YOUR LOCAL PLUNGIE POOL & OUTDOOR LIVING
SPECIALIST



BRANCHING OUT CO.

Table of CONTENTS

03	About Us
04	Plungie Range
06	Standard Inclusions
07	ecoFinish Interior Coating
08	Pool Equipment and Add-ons
09	Customisation Options
10	Plungie Pools and Knock-Down Re-Builds
11	Our Process from Enquiry to Handover
12	Examples of past projects



About US...



We are proudly the leading Plungie Partner in the Sydney region, installing their full range of pre-cast concrete Plunge Pools.

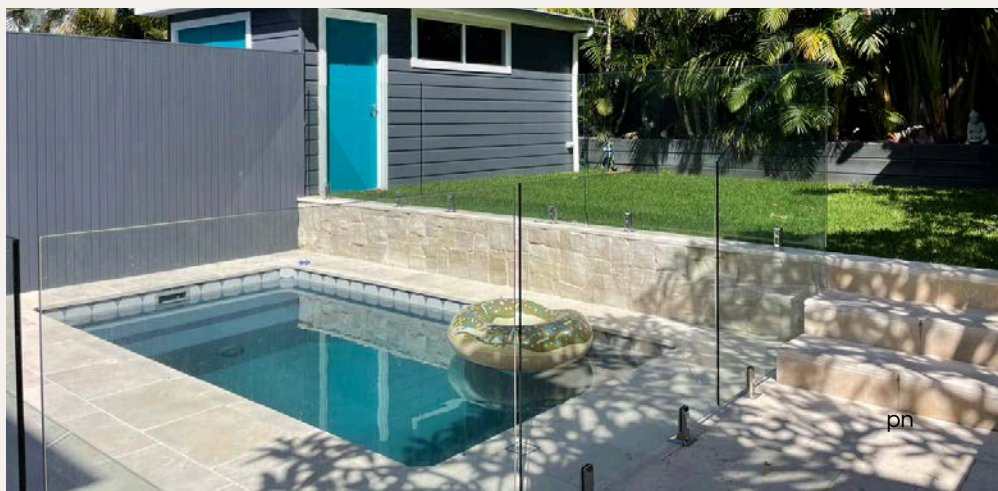
With four different models to choose from, whether you have a large or compact backyard, there's a Plungie pool for you!

From envisioning your dream pool & outdoor living space, drafting plans to create the perfect design, coordinating all the required reports, managing your approvals process, installation of your pool and construction of the surrounding areas, through to the handover of your project - we've got you covered every step of the way!

With our in-house designer working closely with our construction team you can rest assured that your Plungie pool will be a stunning centrepiece, harmoniously integrated into your outdoor space.



We take care of the process from start to finish!



Plungie RANGE

Plungie Arena

The Plungie Arena is 3.5m in diameter, and the only round pool that Plungie offers. The Arena features ample, arena-style bench seating to allow plenty of space to enjoy with friends or family.

Dimensions



Diameter:
3500mm (external)
Height:
1690mm (external)

Bench Space



Bench Space:
3.2m²

Dry Weight



Dry weight:
7,000kg

Volume



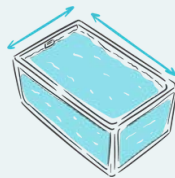
Volume:
9,150L



Plungie Studio

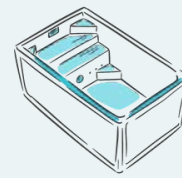
The studio is perfect for a compact backyard or an awkward unused space, giving you the fun of the pool but without utilising your whole outdoor space - so that even with a smaller area you can still get the best of both worlds.

Dimensions



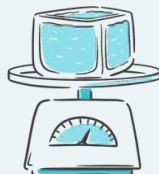
Length:
3,600mm (external)
Width:
2,200mm (external)
Height:
1690mm (external)

Bench Space



Bench Space:
2m²

Dry Weight



Dry weight:
6,800kg

Volume



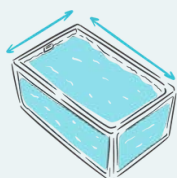
Volume:
8,000L

Plungie RANGE

Plungie Original

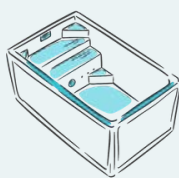
The Plungie Original is a 4.6m x 2.5m rectangular pre-cast concrete plunge pool and as the name suggests was the first design created by Plungie. The Original remains the most popular design and it's easy to see why! The functional layout gives you plenty of room to enjoy your outdoor space.

Dimensions



Length:
4,600mm (external)
Width:
2,500mm (external)
Height:
1690mm (external)

Bench Space



Bench Space:
2.2m²

Dry Weight



Dry weight:
8,600kg

Volume



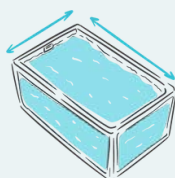
Volume:
14,000L



Plungie Max

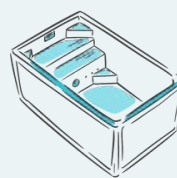
The Plungie Max is a 6m x 3m rectangular pre-cast concrete plunge pool and the largest in the Plungie range. The perfect option for larger families or properties with the space to accommodate them, with the Max you get swimming-pool sized fun with all the benefits of a Plungie pool.

Dimensions



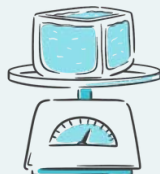
Length:
6,000mm (external)
Width:
3,000mm (external)
Height:
1690mm (external)

Bench Space



Bench Space:
4m²

Dry Weight



Dry weight:
11,800kg

Volume



Volume:
20,100L

STANDARD *Inclusions*

Enjoy your pool in days, not months!

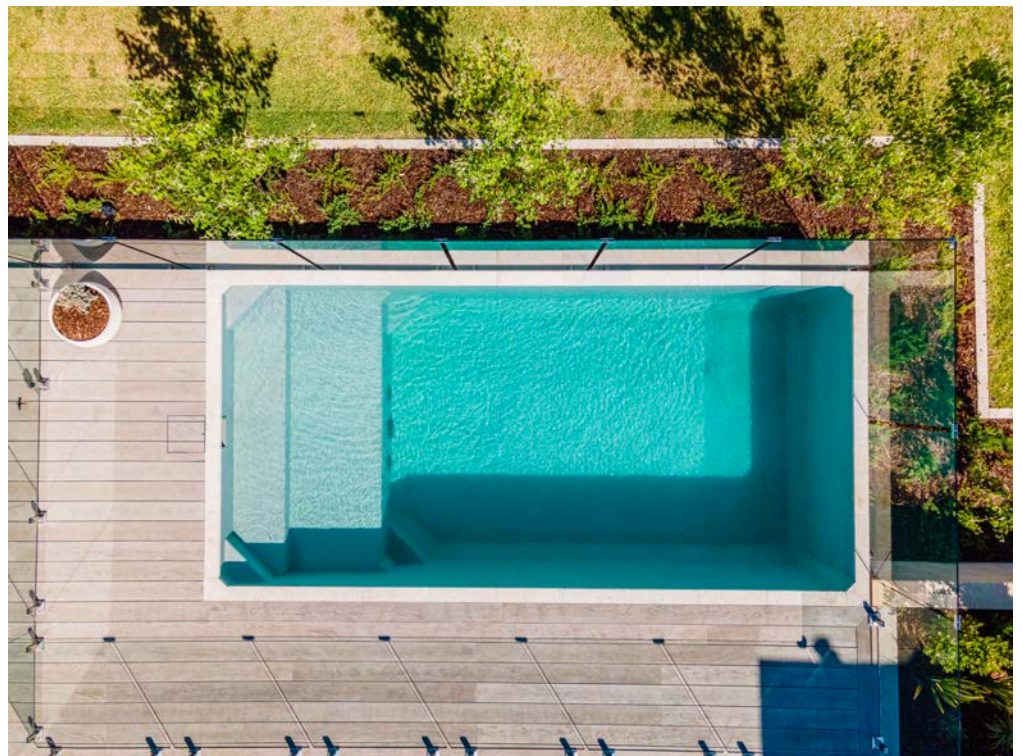
Every Plungie pool comes with the following inclusions as standard, making the installation process as straightforward as possible. The standard inclusions are:

- Highly engineered concrete pool shell
- High-performance ecoFinish interior
- Spa electrics multi-coloured LED light
- Poolrite innoSkim skimmer box
- Pre-plumbed and fitted filtration line provisions
- 10-year structural warranty

ecoFinish is a highly engineered form of powder coating that's heat-blasted onto the internal shell of the pool, forming a completely sealed, flexible, waterproof membrane that's both luxurious to the touch, and highly durable.

There is also an option to order your Plungie pool with a waterline tile provision. This means that the ecoFinish will stop at the bottom of the skimmer entry to allow for us to apply a waterline tile to your pool once installed.

An alternative raw concrete finish is available, this is a great option if you are looking to tile your entire pool.

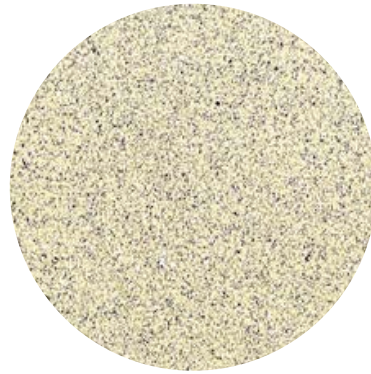


Interior Coatings
ECCOFINISH

KONA COAST



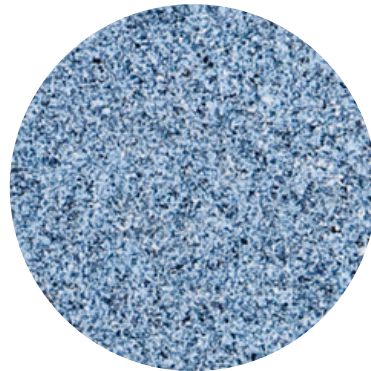
SAHARA SAND



GREY REEF



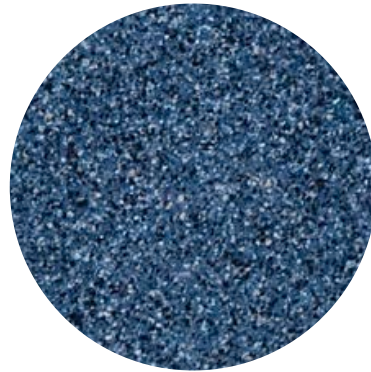
BLUE LAGOON



FRENCH GREY



MEDITERRANEAN BLUE



POOL EQUIPMENT and Add-ons

Keep your pool looking crystal clear and feeling incredible with our pool equipment packages!

Branching Out Co. have a range of pool equipment packages for you to select from, all sourced from our trade partner, Reece.

Every Plungie Pool comes with a skimmer box and standard piping included, ready to connect to your choice of pool equipment.

You can select your choice of equipment packages which include a pump, chlorinator and filter, to keep your water looking crystal clear and feeling amazing!

There are three packages to choose, to suit your pool area and preferences.

- Base Equipment Package
- Eco Equipment Package
- Smart Eco Equipment Package

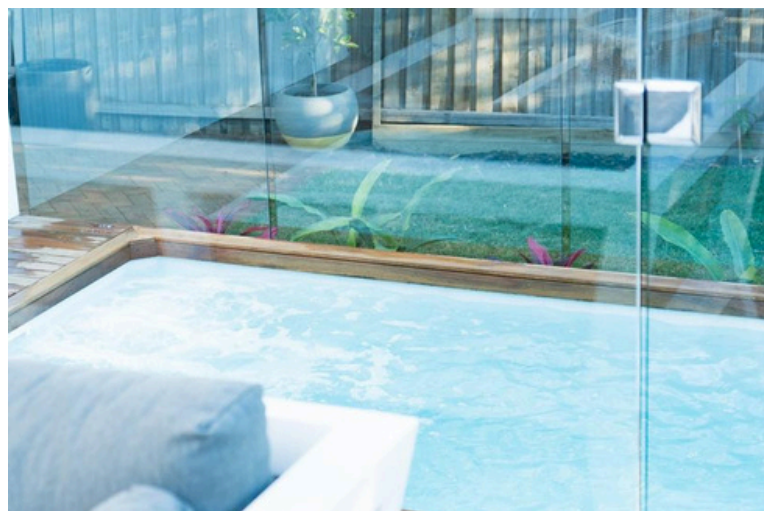
We can also customise your pool equipment to suit your requirements.

We have a range of add-ons and modifications available for your Plungie pool. Some of these must be added when you order your pool, others can be added later. Our team will confirm if any add-ons are desired when confirming your pool order.

The current add-on options include:

- Pool Heater (gas or electric)
- Spa jets* - manual or automated
- Ferrules* - allow you to attach glass fencing to your pool shell. Can be used to secure your concrete surrounds to the pool or a timber deck can also be fitted to the pool shell.
- Waterline tile provision* - to allow for easier installation of waterline tiles
- Raw concrete finish* - to allow you to fully tile your pool
- Construction Cover* - to protect your pool on a construction site
- Accessory Holders* - can be used to insert accessories such as an umbrella or a table into the step of the Plungie pool

Note - items with an * next to them need to be confirmed at the time of order.



Options CUSTOMISATION

Our team can offer further options to customise your pool.

Starting with the choice of Plungie pool model, there are several options you can choose from to help create a space that reflects your own personal style.

The Plungie pool can act as a retaining structure, meaning they are suitable for installation fully in-ground, partially above-ground or fully above-ground.

For the pool interior, you can choose from one of the six ecoFinish colours, with the option to add waterline tiles or even fully tile the interior to give a truly custom look to your pool.

You can choose your pool coping, with many options out there to either compliment your interior finish or to provide a striking contrast as a design statement.

Once the pool has been installed, there are further choices for the surrounds which help you to customise your pool area to suit your design style. For example, you can choose to add paving around the pool or decking, if that suits you better.

Our in-house Designer can go through all of the design choices with you to help guide your decision making process and help you to bring what you had envisioned to life in a way that makes perfect sense and compliments the rest of your outdoor space.

Head to our website for more options and details on how to you can customise your Plungie Pool to reflect your desired look.



and Knock-down Re-builds

PLUNGIE POOLS

Plungie pools provide a fast & effective solution for a knock-down re-build site

If you are planning a knock-down re-build, or you are building on an empty lot, the best time to install your pool is before the new house construction starts.

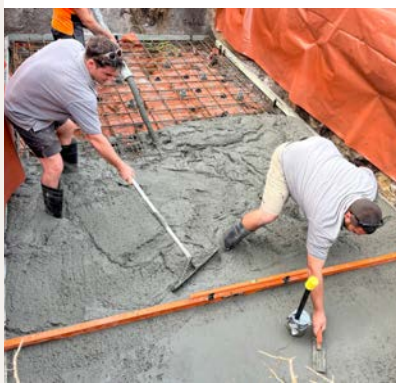
Getting access to install the pool prior to the house build makes the process as simple as possible - giving us clear access for larger excavation equipment and allowing the absolute best access possible for the crane lift to install the pool.

If your house approvals don't include the pool, we offer a full design & approvals service with our in-house designer.

Depending on site conditions, we can have your pool installed in as little as seven days from starting excavation. We start with marking out the pool location, excavating the pool hole, installation of the steel and pouring of the concrete for the pool slab. Next up, we oversee the crane lift to install the pool on the slab and then carefully backfill around the pool.

We will install the Plungie pool with a construction cover to ensure the interior of the pool is protected, as well as ensuring a safe work environment during the house build.

We can then return after your house build is completed to install your pool equipment and commission the pool.



1. ENQUIRY

Submit your enquiry to our team via the contact form on our website. Our team will review your details, request any additional information required at this stage and complete an initial assessment of the logistics required to instal a Plungie pool at your site.

2. INITIAL ESTIMATE

Once the logistics have been assessed and it appears possible for a Plungie pool to be installed at your site, our directors will generate an initial estimate for the costs to Supply & Install the selected Plungie pool model. If you do not already have plans and/or approvals in place, we can also provide an estimate for our in-house designer to complete these steps for you.

3. MEETING

After your initial estimate has been sent out, our team will reach out to confirm you have received it and answer any questions your may have. If you are happy with the initial estimate, we can then arrange for a meeting with one of our directors to view the site in-person and to discuss the requirements for the project. At this stage we also confirm the requirements for the crane lift and arrange a site inspection by the crane operator if needed.

4. SITE REPORTS

Once you have confirmed you are moving forward with the project, we will start to coordinate the site reports, generally a Geotechnical report and a Site Survey. Depending on the outcome of the Geotechnical report you may require additional site-specific engineering, which the team will discuss with you if this is applicable to your project.

5. DESIGN & PRE-APPROVALS STAGE

Unless you already have come to us with plans ready to go, we would now commence the design and approvals process. You will work with our designer to create the plans for your pool and surrounding areas. Your initial draft plans will be sent through to you for review and we will perform the initial approvals checks at this stage to determine what process we will need to follow.

6. APPROVALS

Once your plans are finalised we then coordinate the approvals process. Depending on several factors, you will require either a Complying Development Certificate (CDC) or a Development Application (DA) approval for your Plungie pool installation. We will assess the design against the requirements for CDC first, to determine if a CDC is possible and if not, we will proceed with a DA.

7. JOB COMMENCEMENT

Once your plans are approved, we can get the construction stage underway! Our experienced team will complete the construction works according to your approved plans.

8. HANDOVER

Once the construction stage is complete, the site will be cleaned up with any remaining rubbish removed. One of our team will then arrange a time to complete a handover of the project which includes running you through the pool equipment. Our team will provide the paperwork required to have your project signed off once all works are completed.

at some of our completed projects

TAKE A LOOK





Contact the team at Branching Out Co. to transform your outdoor space into an oasis that you have always envisioned.

Our website contains lots of information on the processes involved, more photos and videos of some of our past projects, more details on the options to customise your pool and more information on our company & all the services that we offer.



Contact us

02 9905 6717
www.branchingoutco.com.au
info@branchingoutco.com.au

Instagram @branchingoutco
Facebook @branchingoutcoau

