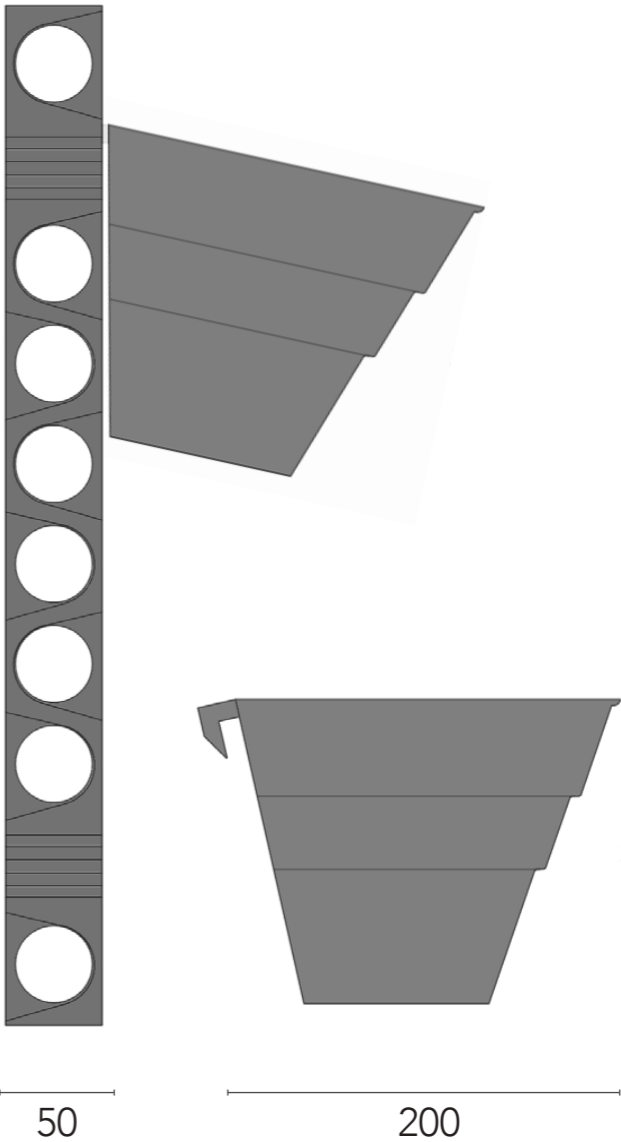
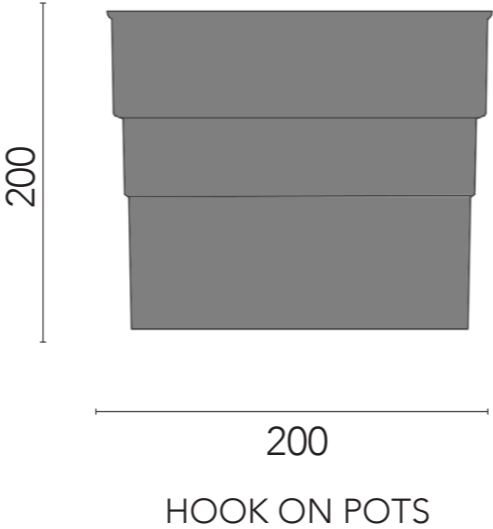
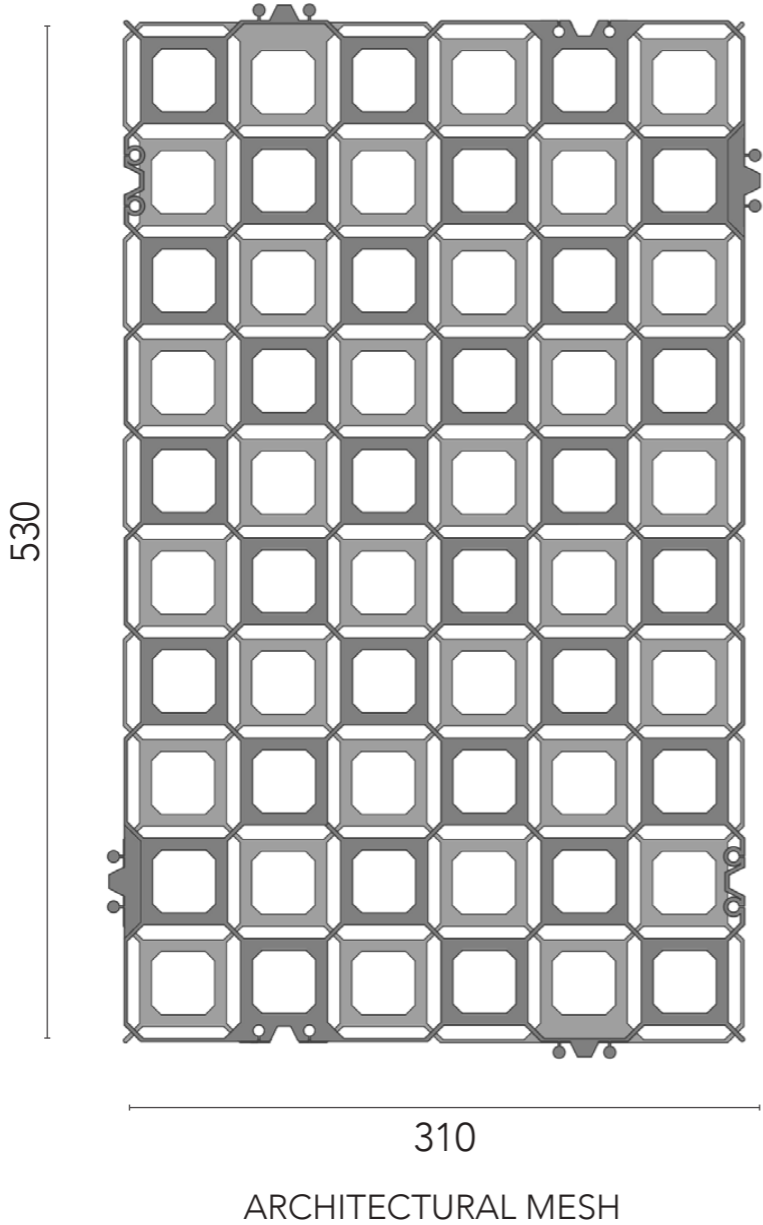
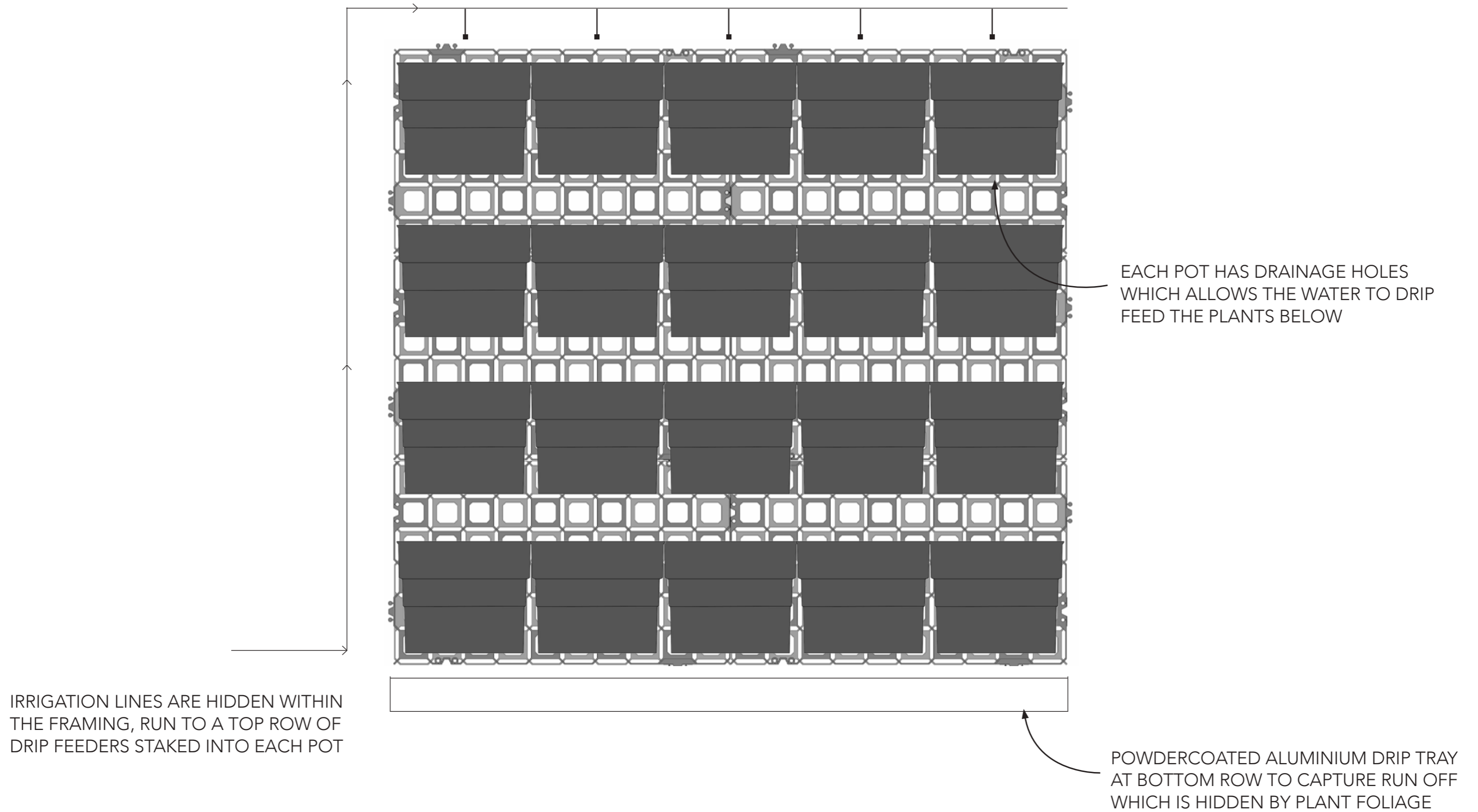




A U S T R A L I A
G A R D E N S
V E R T I C A L







DAY 1
PLANTING AND
PROPAGATION



DAY 30
PLANTS ARE SHOWING
NEW GROWTH

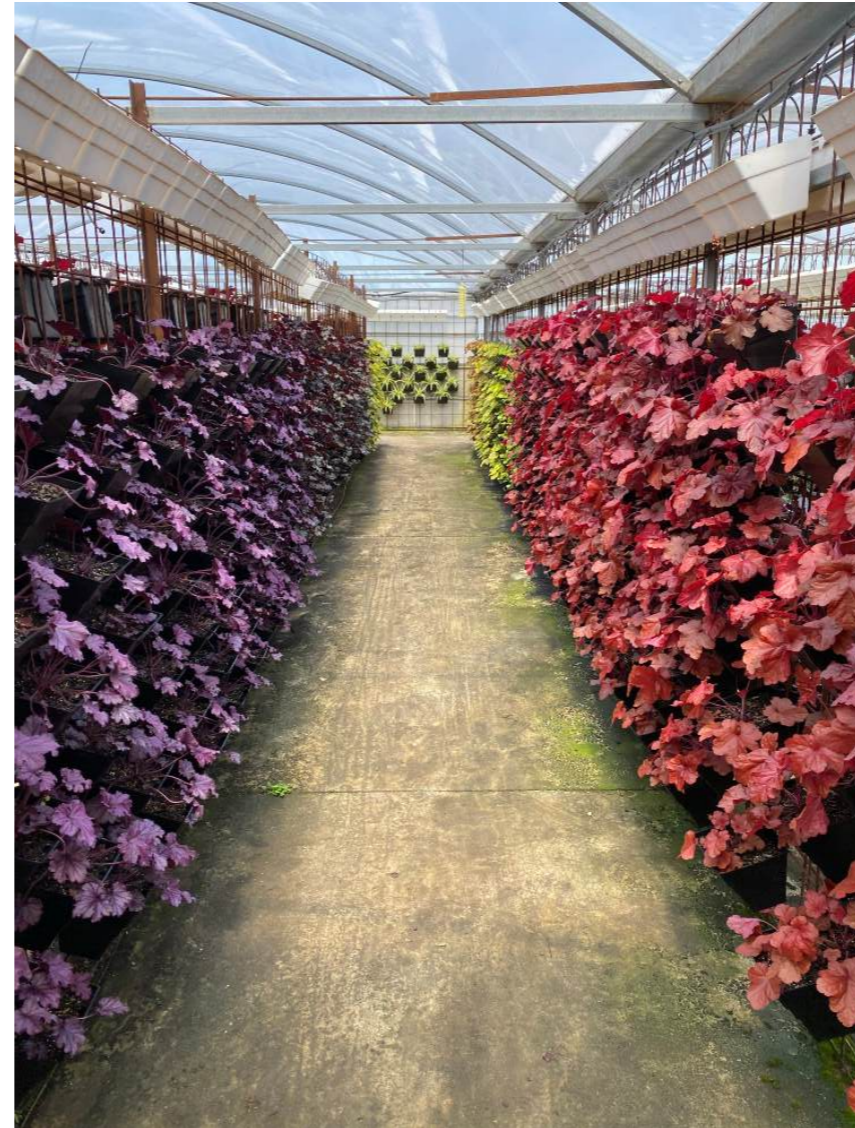


DAY 60
PLANTS ARE MATURING WITH
ROOT DEVELOPMENT



DAY 90
PLANTS ARE FULLY MATURED
READY FOR THEIR NEW HOME





OUR TRIPLE GUARANTEE



TRIED AND TESTED, OUR EVERGREEN RANGE THRIVES ALL YEAR



PLANTS ARE GROWN AND MATURED IN THEIR POTS FOR 90 DAYS



3 MONTH REPLACEMENT WARRANTY WITH OUR MAINTENANCE PROGRAM

WE KNOW WHAT WORKS

WE'VE NARROWED IT DOWN TO 60 VARIETIES OF PLANTS THAT WE KNOW WORK IN OUR VERTICAL POTTED SYSTEM.

CATEGORISED FOR THE FOLLOWING AREAS:

- FULL SUN (AFTERNOON SUN)
- PART SUN / PART SHADE (MORNING SUN)
- FULL SHADE
- INDOOR

100% = 20 PLANTS
\$840 PER SQM



60% = 12 PLANTS
\$540 PER SQM



1920mm
58 PLANTS
\$4,150

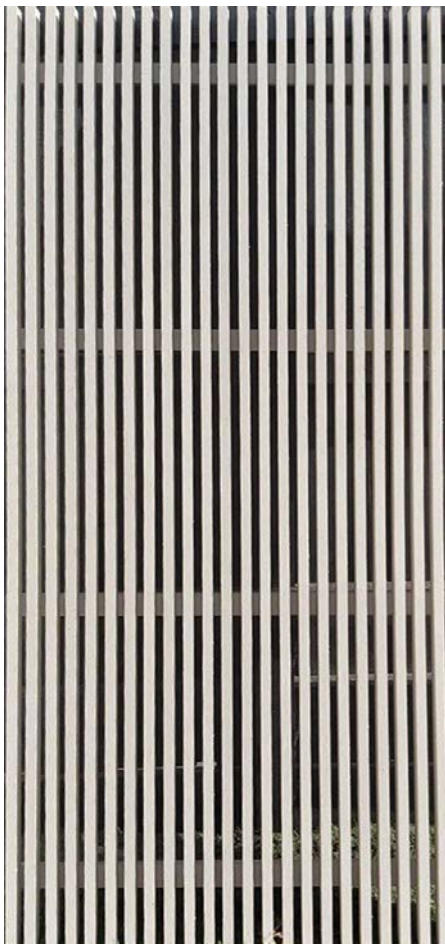


1120mm
16 PLANTS
\$1,925

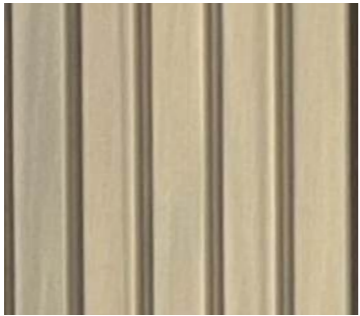


1520mm
39 PLANTS
\$2,900





From \$250 per sqm



From \$200 per sqm





Air-conditioning unit covers
From \$600

DECORATIVE PANEL RANGE

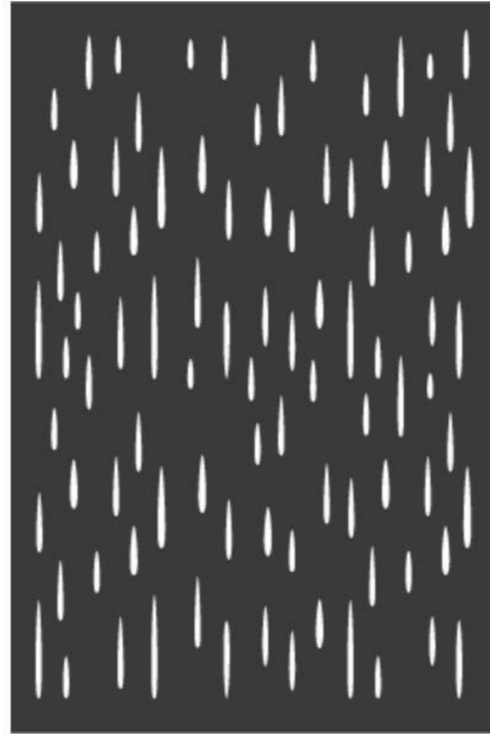
1800 x 1200 from \$320 per panel



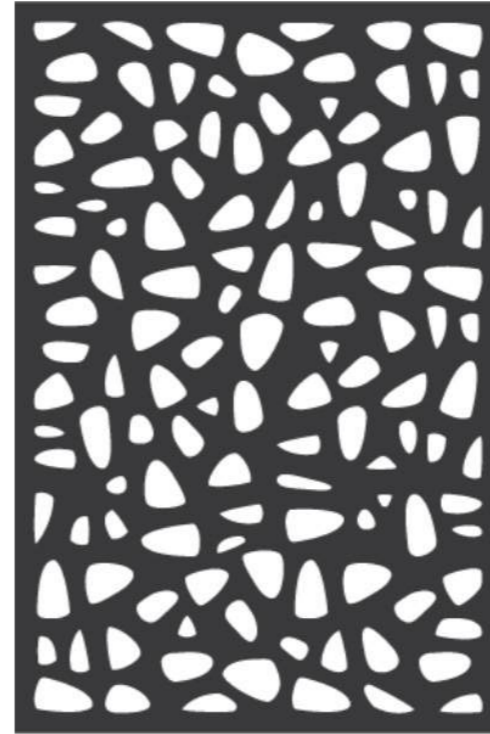
DAINTREE 80%



ORIENT 90%

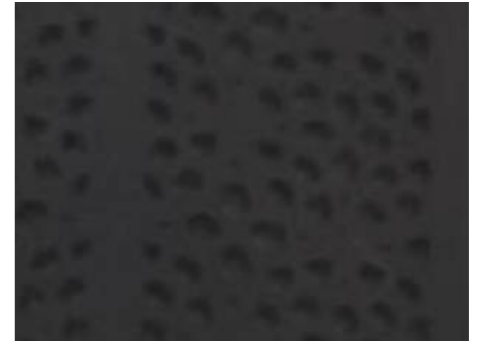


MONSOON 90%

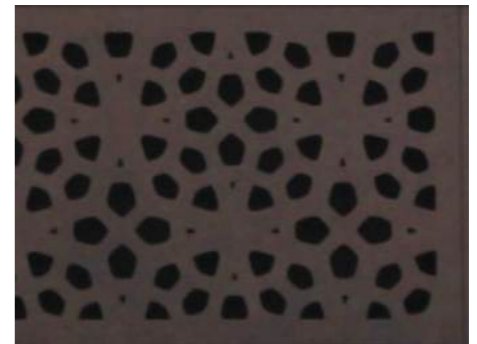


STONEFIELD 80%

CHARCOAL



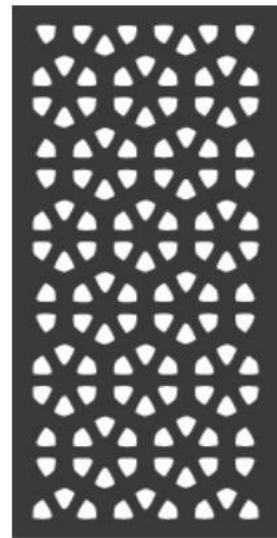
BROWN



1200 x 600 from \$119 per panel



HERRINGBONE 70%



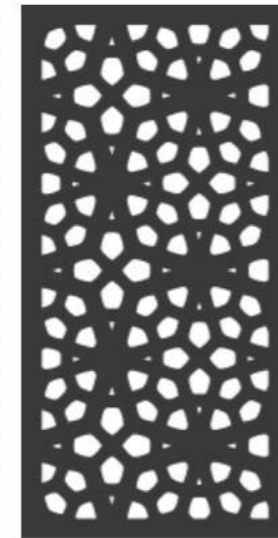
OSAKA 80%



WOOLOOMAI 80%



STAR ANAIS 90%

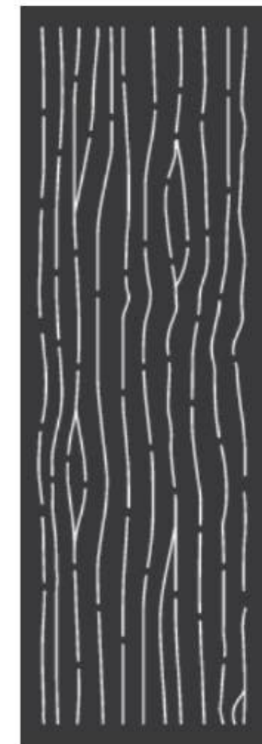


MARRAKESH 80%

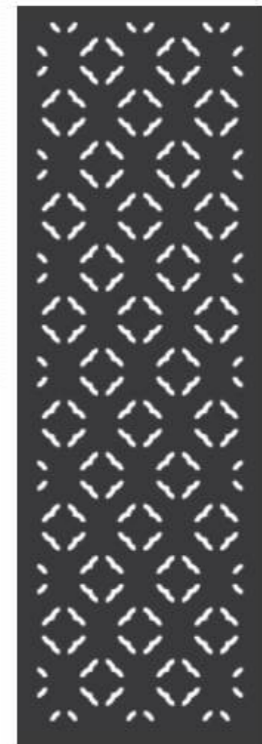


CUMULUS 90%

1800 x 600 from \$189 per panel



MOUNTAIN ASH 90%



MODINA 90%

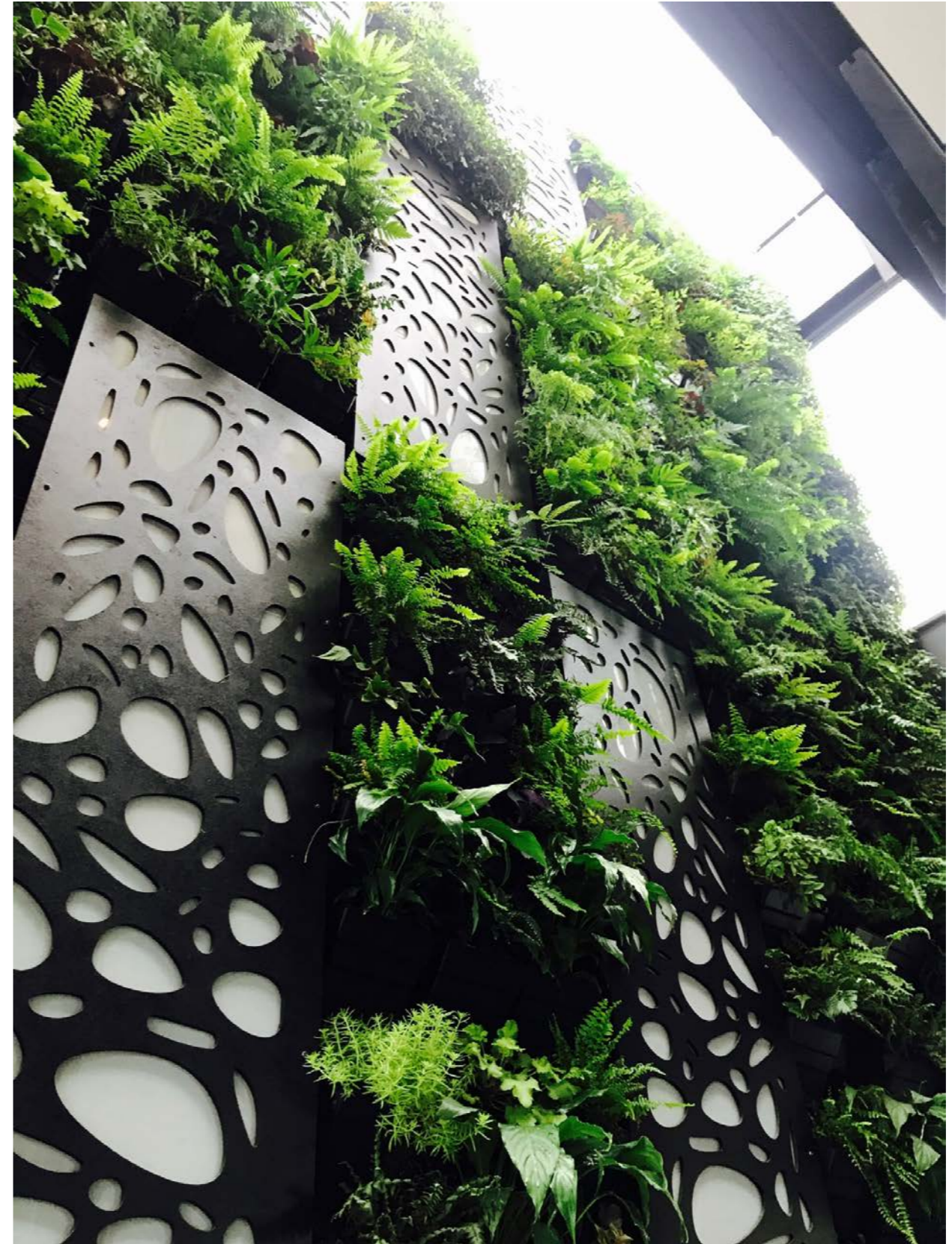


STAR JASMINE 80%

PLANT DOMINANT



50/50 SPLIT



SCREEN DOMINANT





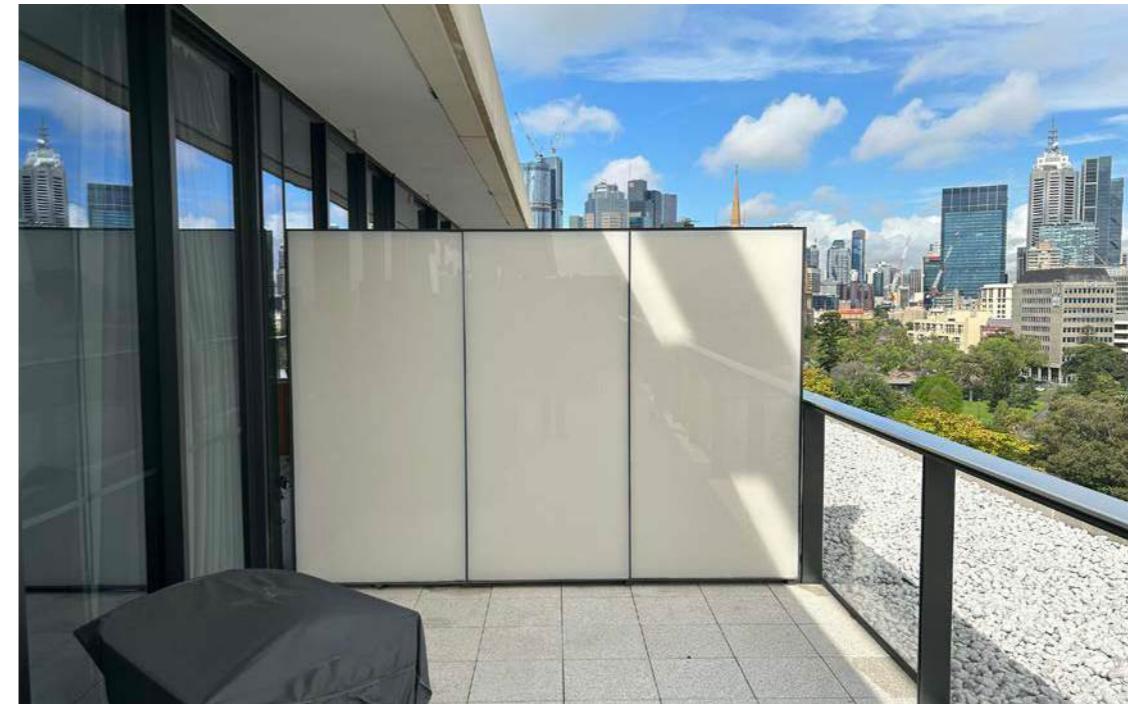




6.5 SQM Affixed to balustrade
80 PLANTS at 60% density
\$4,600



8 SQM
160 PLANTS
\$8,800



6 SQM Free-standing frame
120 PLANTS
\$7,400



10 SQM
200 PLANTS
\$11,800



4 SQM
80 PLANTS
\$4,900



8 SQM
190 PLANTS
\$8,800





18 SQM
360 PLANTS
\$22,000



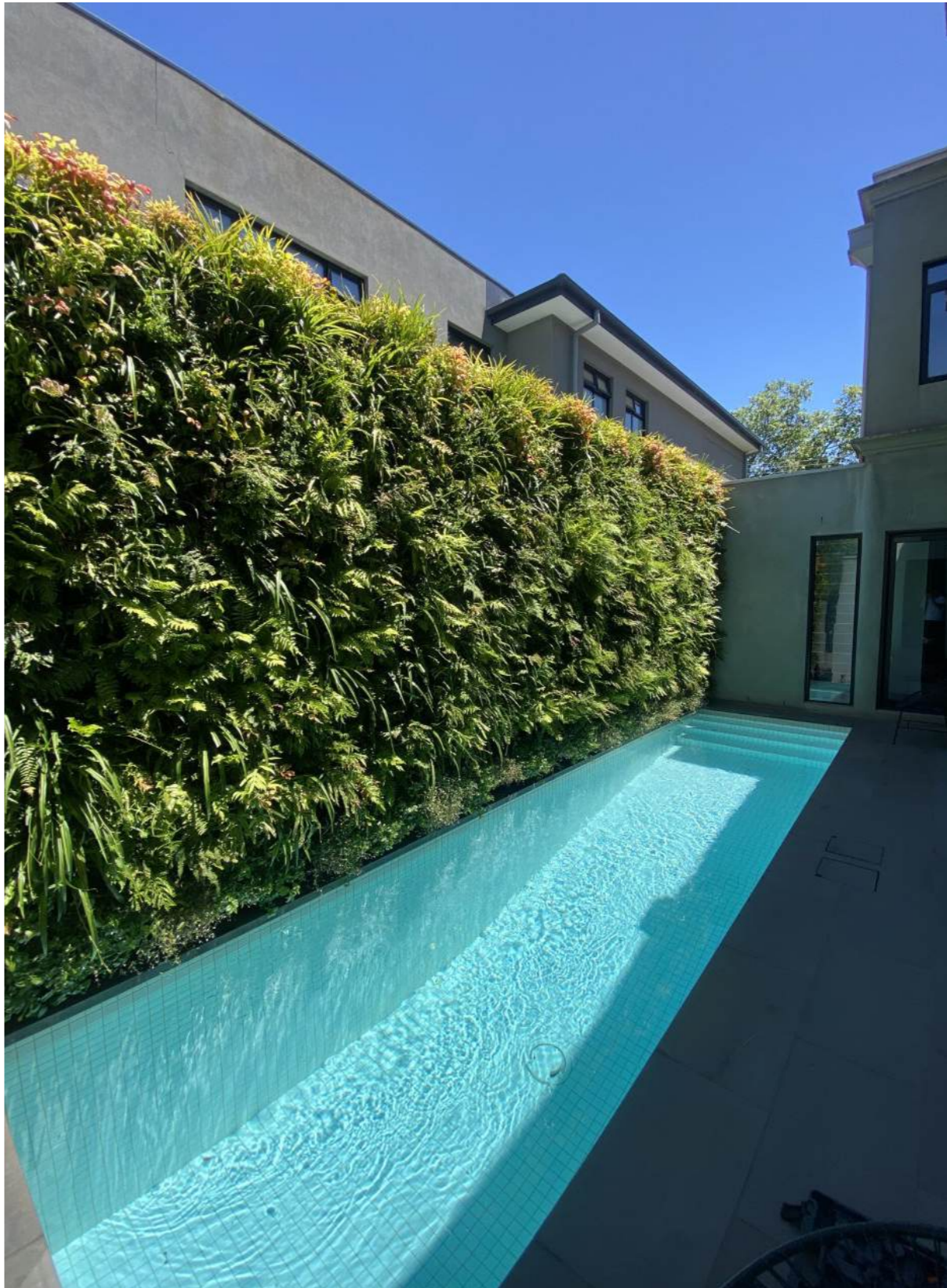
2.5 SQM
50 PLANTS
\$3,700

9 SQM
12 SCREENS
\$2,600 installed



1520mm circles 24 SQM
39 plants each BATTENS
\$7,200 total \$8,200





28 SQM
560 PLANTS
\$29,300



28 SQM
BATTENS
\$8,800

3 x 2020mm circles = 177 plants total
\$3,700 each
\$13,800



7 SQM
144 PLANTS
\$7,400



5 SQM
100 PLANTS
\$6,000



10 SQM
200 PLANTS
\$12,000



3 SQM
60 PLANTS
\$3,900



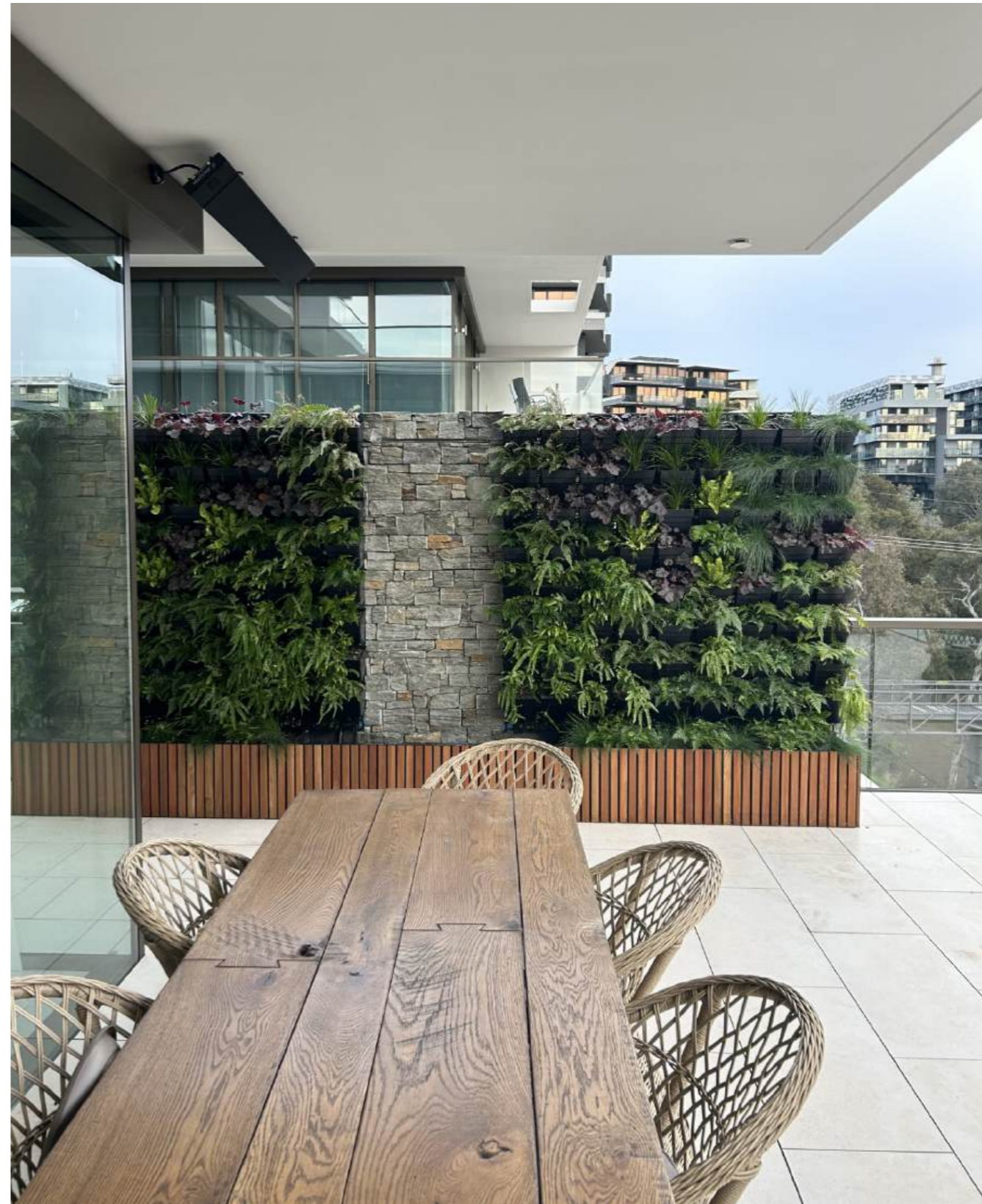
2020mm diameter circle
59 PLANTS
\$3,700 ++



6 SQM
120 PLANTS
\$6,800



2.5 SQM
54 PLANTS
\$3,800



10 SQM
200 PLANTS
\$14,000

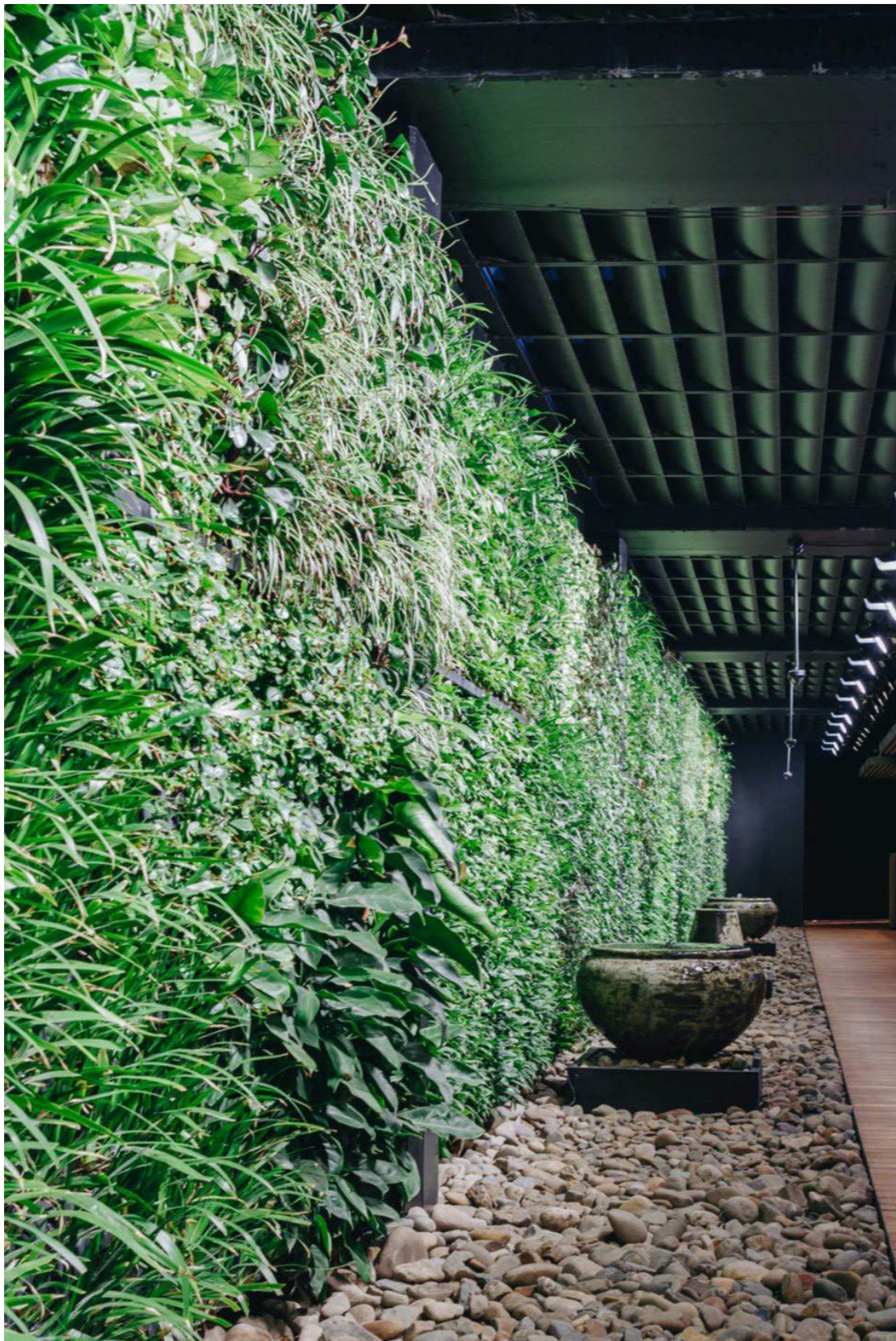


4.5 SQM
90 PLANTS
\$5,800

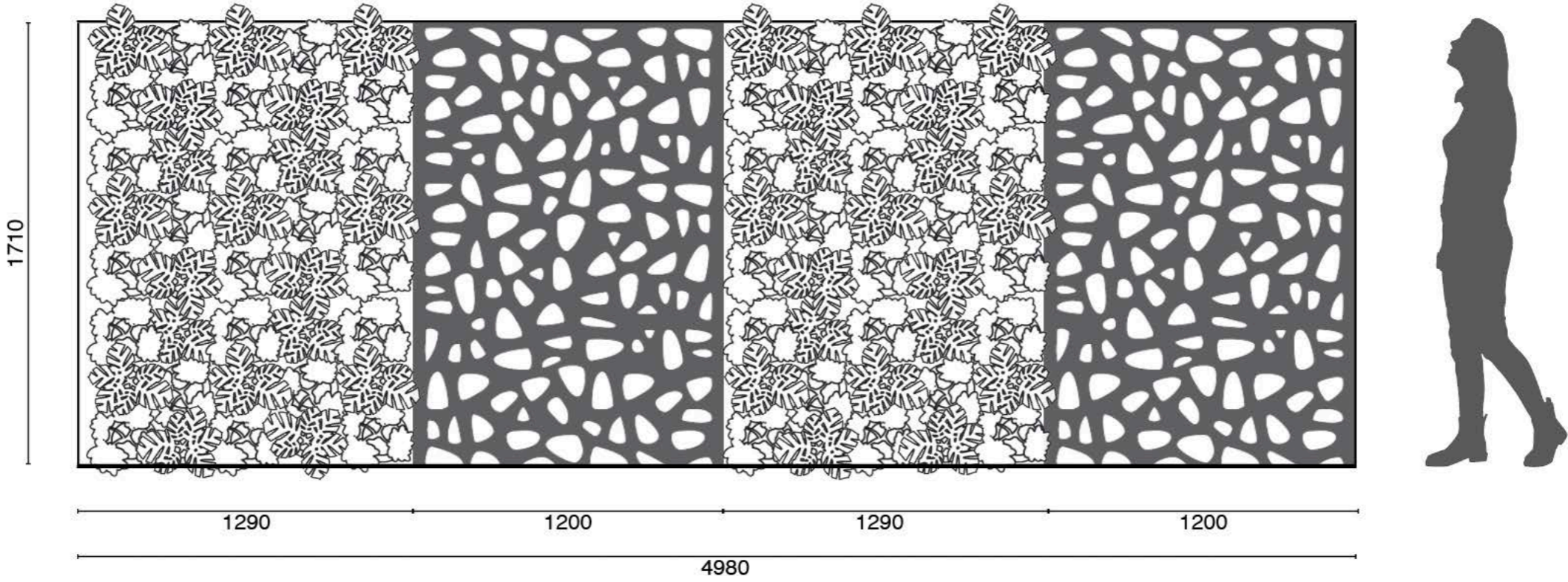


1.5 SQM
28 PLANTS
\$2,800













8.5 TOTAL SQM
96 PLANTS
\$6,150

