

The Number One Italian Kitchens Manufacturer



Since 2012 **Made in Italy Kitchens** is the Australian distributor of CUCINELUBE, the number one Italian kitchen manufacturer:

- Established in 1956
- Over 350 kitchen produced / day in the 120,000 SQM factory in Marche region
- 100% Made in Italy production
- 3 Kitchen Brands + 1 Wardrobe Brand
- The most extensive range of doors finishes (from Porcelain to P.E.T.)
- A very competitive price to quality ratio
- Export to 80+ Countries worldwide
- Compliant with all International Standards
- Lead Time Italy to Australia 12-16 weeks

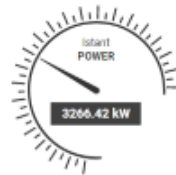


[Click to watch the COMPANY PROFILE](#)

The Most Sustainable Kitchen's Production



- 40,800 SQM Solar Powerplant (production without CO2 emissions)
- Overcompensation of the emissions related to the shipment
- F 4-stars Compliance (Strictest formaldehyde emissions standard)
- REACH Compliance (No toxic elements in the coating)
- GREEN GUARD Certification & EPA Compliance (VOC emissions control)
- FSC Certification (Responsible use & 100% Recycled Timber)
- ISO 14001 Certification (Environmental Management System)



TOTAL ENERGY*
34936.62 MWh

CO² SAVED*
13869.37 ton

OIL SAVED*
6533.37 tep

DAILY ENERGY*
5696.90 kWh

EQUIVALENT TREES*
1676970

*from activation of the plant.



[Click to watch the COMPANY PROFILE](#)

13870^{tons} of CO₂ Saved



The Most Sustainable Kitchen



Volatile Organic Compounds (VOCs) are a group of chemicals that are found in many building product, from coating to joinery.

CUCINELUBE is the first kitchen producer in Europe to have achieved the UL GREENGUARD Gold Certificate, as reported on [UL website](#). Such an award, together with the compliance to the F4stars, certifies that our kitchens meet stringent chemical emissions limits and stand out as contributing to better indoor environmental quality. Our products indeed assure extremely low emission of **VOC** from both joinery structures (already compliant with the JIS F4stars) and lacquering coating.



GREENGUARD certification is a rigorous, scientific process of testing products for harmful VOCs in line with international standards and the highest ethical principles for health and safety. The GREENGUARD Gold certification standard goes one step further ensuring that VOCs used in manufacture of products have lower emission levels for safe use in sensitive environments, such as schools and healthcare facilities.



Low VOCs emissions are becoming mandatory in many government projects around the world. **GREENGUARD Certification Program** has been widely adopted worldwide as a trusted standard for low-emitting products. In USA, more than 400 green building codes, standards, guidelines, procurements policies, and rating systems give credit for GREENGUARD Certified products: to quote a few, the U.S. EPA (United States Environment Protection Agency), the state of Washington, the CDPH (California Department of Public Health).

Our Brands



[Click to go to CucineLube website](#)

- Kitchen, Laundry & Living - 22 to 25 mm doors
- 480 finishes, including Mutina, Porcelain, Glass, Aluminium, P.E.T., Fenix NTM, Special Lacquer, Timber Veneer with metallic threads,
- 20 different models with flexible and rich catalogue



[Click to download the catalogue \(zip 184 MB\)](#)



[Click to go to Creo website](#)

- Kitchen, Laundry & Living - 18 to 20 mm doors
- 180 finishes
- 12 models with competitive price



[Click to download the catalogue \(9 MB\)](#)



[Click to go to Faer website](#)

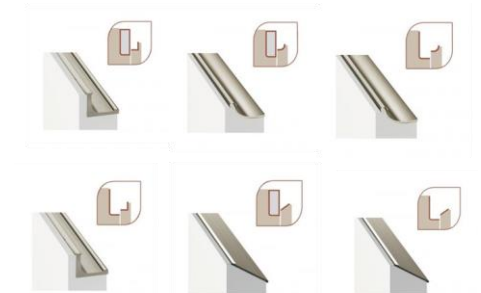
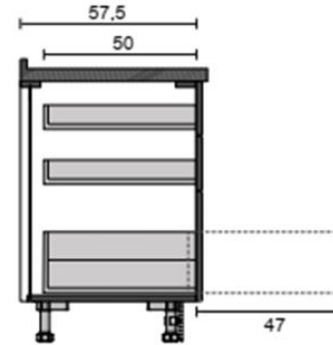
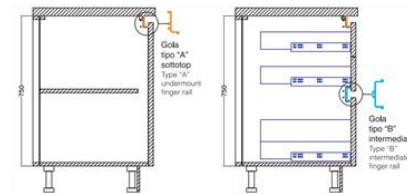
- Wardrobes - 22 to 25 mm doors
- 120 finishes
- 22 models including W.I.R., Sliding doors and hinged doors



[Click to download the catalogue \(32 MB\)](#)

Our Quality

made in **Italy**
 Australian Importer for



BLUM Blumotion
 Soft closing hinges 110 & 155 degrees

BLUM Blumotion – soft closing full extraction drawers -capacity up to 60 Kg
 Recessed back for a better insulation
 Units on adjustable legs - Aluminium finger rails & plinths

Extensive choice of opening systems
 on 22 and 25 mm doors



bianco (opt.001)
 schiena e ripiano bianco
 (opt.001)
 white (opt.001)
 white back panel and shelf
 (opt.001)



visone (opt.948M)
 schiena e ripiano visone
 (opt.948M)
 mink (opt.948M)
 mink back panel and shelf
 (opt.948M)



lavagna (opt.9620)
 schiena e ripiano lavagna
 (opt.9620)
 slate grey (opt.9620)
 slate grey back panel
 and shelf (opt.9620)



fango (opt.8860)
 schiena e ripiano fango
 (opt.8860)
 mud (opt.8860)
 mud back panel and shelf
 (opt.8860)



conchiglia (opt.8910)
 schiena e ripiano conchiglia
 (opt.8910)
 shell (opt.8910)
 shell back panel and shelf
 (opt.8910)

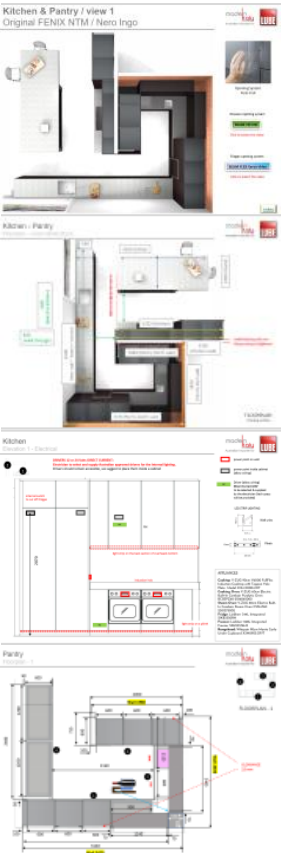


argilla (opt.9690)
 schiena e ripiano argilla
 (opt.9690)
 clay (opt.9690)
 clay back panel and shelf
 (opt.9690)

Structure: 18 mm JIS F4* Laminate - 6 Colours choice

Latest internal equipment

Our Service



- Full assistance from concept to installation
- 1K different finishes
- 30 kitchen models, options for production based on your design
- 5 opening system options
- 6 wardrobes models
- Solutions for every area (Kitchen, Laundry, WFH, Wardrobes, Living)
- Extensive warranties (i.e. lifetime on Blum hinges & drawers, 10 years on structures)
- Unique materials
- Flexibility with customization
- Exclusive products



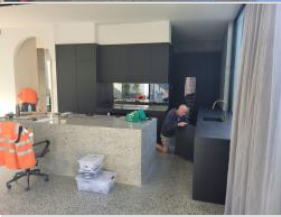
[Click to see some of our Projects](#)



[Click to download our Brochure](#)



[Click to download Shop Drawings](#)



ROUND IN P.E.T.



ROUND is a Totally Recyclable kitchen, formed by panels in Recycled wood F4Star and 22 mm-thick door with panel in certified MDF (compliant with US EPA TSCA TITLE VI) coated with polymeric sheet PET*



[Click to see Round Web Profile](#)



* polyethylene terephthalate, abbreviated as PET, is a modern synthetic material, environmentally friendly and 100% recyclable. The main features that distinguish it from traditional plastics are its flexibility and excellent dimensional stability, which renders it unalterable over time. Its high resistance to heat, wear and thermal ageing makes PET one of the most innovative, future-oriented materials.

CLOVER IN PORCELAIN



Catalogue Picture, Black Mutina



Catalogue Picture, Black Mutina



Margaret Project, Albert Park, Porcelain & Glass



Catalogue Picture, Special lacquer metal effect & Timber Veneer



Hana Project, Docklands, Cement & Glass

Clover with 22 mm door formed by 3 mm Gres Porcelain and 18 mm aluminium frame. Gres Porcelain is a totally natural product. It does not release any elements into the environment and can be easily milled and recycled in other manufacturing processes.



[Click to see Clover Web Profile](#)

Clover is part of the Design Collection, which offers Top End finishes, including Mortar Cement, Special Lacquer with Raw or Brushed Metal effect, Timber Veneer with metallic thread, Glass on Aluminium frame

IMMAGINA IN MATHERA (MINERAL MIX)



Catalogue Picture, Immagina Mathera



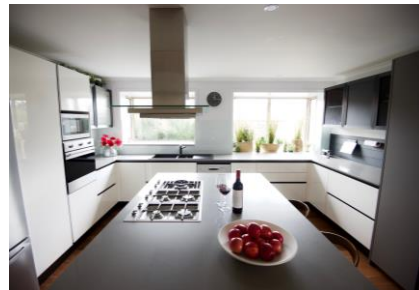
Catalogue Picture, Immagina Mathera



Declan Project, South Melbourne, Kitchen & Library



Catalogue Picture, Immagina DPL



George Project, Caulfield, Lacquer & Glass



[Click to see Immagina Web Profile](#)

Immagina also offers finishes in Direct Pressure Laminate with timber or metal effect, Direct Lacquer, Timber Veneer, Acrylic, Glaks/Arcylic Glass, Glass on Aluminium frame

FAER ATELIER IN GLASS



Catalogue Picture, Atelier Glass

Atelier is the Wardrobe Collection by Faer, with 25 mm panels in Recycled Timber for the structures and Glass on Aluminium frame doors.



[Click to see Glass Web Profile](#)



Catalogue Picture, Atelier Vision



Alan Project, Hawthorn East, Bronzed Glass

Atelier also offers doors in Laminate and Lacquer, with opening system choice between hinges or sliding doors, both soft-closing



Catalogue Picture, Atelier Avenue



Sharon Project, Hawthorn East, Smoked Glass

SPECIAL FEATURES

Australian Patented Dynamic Splashback



[Click to watch the video](#)

Our Australian Patented Dynamic Splashback enhance the functionality and the beauty of any kitchen with a true WOW effect

Emotional Dual Colour Lighting



[Click to watch the video](#)

How to transform the look of any area by dimming and changing the temperature of the lighting

Pull-out benches



[Click to watch the video](#)

Functional solutions to increase or hide the sitting area and improve the kitchen's ergonomics