

Sanctuary
RANGE

Live the life
you've always
dreamt of







Contents

Single storey	6
Double storey	36



Welcome to your Sanctuary

Hotondo Homes' Sanctuary Range is cleverly designed to suit all of your family's requirements. This inspirational collection will build your family memories and create a true sanctuary you will enjoy for years to come.



Open up to a home
you'll love and adore.



The aptly named Sanctuary Range cleverly combines style with practicality to create a true sanctuary for you and your family to enjoy for years to come. With a particular focus on the open-plan kitchen, family, dining area and alfresco, these homes seamlessly blend indoor and outdoor living.

As Hotondo Homes' largest range, there is a single or double storey home to suit the needs of every family. Start the next chapter of your life in one of these spacious designs.

Come home to your very own Sanctuary.

Single and Double Storey Homes Collection



Single

DESIGN	SQUARES	WIDTH (M)	LENGTH (M)	BEDS	BATHS	LIVING	GARAGE	PAGE
Airlie 230	24.74	12.71	21.11	4	2	2	2	8
Alden 312	33.53	31.51	14.12	4	2	3	2	9
Cooloola 208	22.36	14.26	18.39	4	2	2	2	10
Dakota 267	28.73	14.79	20.12	4	2	2	2	11
Easton 259	27.83	12.71	22.43	4	2	2	2	12
Erskine 240	25.88	12.65	22.18	4	2	2	2	13
Eureka 263	28.30	13.65	19.73	4	2	2	2	14
Hume 263	28.32	15.52	20.80	4	2	2	2	15
Icelyn 243	26.13	12.71	21.33	4	2	2	2	16
Iris 237	25.56	12.71	20.39	4	2	2	2	17
Jagera 294	31.66	13.00	25.52	4	2	2	2	18
Jamieson 250	26.87	14.99	19.79	4	2	3	2	19
Kirkby 259	27.89	12.93	22.29	4	2	3	2	20
Lansdowne 304	32.67	29.98	16.09	4	2	3	2	21
Luca 260	27.98	12.70	22.43	4	2	2	2	22
Marcoola 245	26.35	12.90	22.56	4	2	2	2	23
McRae 250	26.92	16.40	18.97	3	2	3	2	24
Mica 283	30.44	12.71	24.47	4	2	3	2	25
Northcote 208	22.39	13.02	17.36	4	2	1	2	26
Orion 228	24.56	11.13	22.67	4	2	2	2	27
Somerset 233	25.12	12.80	20.70	4	2	2	2	28
Stockton 380	40.87	38.51	14.52	4	2	3	2	29
Tarkine 238	25.61	11.27	24.00	3	2	2	2	30
Vida 238	25.58	12.57	20.62	4	2	2	2	31
Vida 238 Alt	25.58	12.57	20.62	4	2	2	2	32
Willowgrove 332	35.72	14.80	24.37	4	2	3	2	33
Yering 248	26.70	22.79	12.35	4	2	3	0	34
Yering 248 Alt	26.71	22.79	13.43	4	2	3	0	35



Double

DESIGN	SQUARES	WIDTH (M)	LENGTH (M)	BEDS	BATHS	LIVING	GARAGE	PAGE
Acacia 261	28.07	11.87	13.79	4	2	3	2	38
Acacia 261 Alt	28.08	11.87	13.79	4	2	3	2	39
Alameda 254	27.33	10.43	14.87	4	2	3	2	40
Calva 303	32.58	10.55	18.83	4	2	3	2	41
Esplanade 281	30.23	11.80	15.84	4	2	2	2	42
Hillgrove 234	25.17	11.76	13.63	4	2	2	2	43
Hillgrove 234 Alt	25.16	11.76	13.63	4	2	2	2	44
Illawarra 215	23.16	10.95	13.73	4	2	3	2	45
Jaxton 261	28.08	10.34	16.72	4	2	3	2	46
Kalara 253	27.25	11.99	16.55	4	2	3	2	47
Kalara 253 Alt	27.19	11.99	16.55	4	2	3	2	48
Lorne 297	31.98	10.65	20.50	4	2	3	2	49
Lyon 368	39.60	16.07	23.75	4	2	3	2	50
Mila 270	29.05	8.51	20.15	4	2	2	2	51
Promenade 283	30.44	11.87	15.39	4	2	3	2	52
Promenade 283 Alt	30.44	11.87	15.39	4	2	3	2	53

Elevate your new home dreams with our spacious double storey designs, or enjoy everyday living in our single storey homes. This inspirational collection was perfectly crafted for your family.



Single Storey

The epitome of spacious family living

Everyday living is easy in our large range of single storey home designs. Offering generous master suites and spacious entertaining areas, our Sanctuary Range has something for every member of your family.

#All floor plans, facade images and internal photos shown are provided for illustrative purposes only and are not drawn to scale. The dimensions provided of 'width' and 'length' are the dimensions to the structural frame. No allowances have been made for any council regulations or estate requirements. It is the home owner's responsibility to ensure that the house will fit on their land and that all applicable council regulations and estate requirements are met. The images may contain items that are examples of upgrades available at an additional cost (eg. garage doors, entry doors, lighting). Images may also contain items not supplied by Hotondo Homes including furniture and wall hangings. Check with your local builder for the inclusions details. Hotondo Homes reserves the right to change plans, specifications, materials and suppliers without notice.



AIRLIE



START THE NEXT CHAPTER OF YOUR LIFE IN THE STUNNING AIRLIE.

The Airlie 230 features everything you and your family could ever need, starting with a well-appointed kitchen. This central hub of the home boasts a large pantry and island bench, which looks out to the open-plan dining and family area and adjoining alfresco, ideal for entertaining. The three bedrooms offer built-in-robos and convenient access to bathroom facilities, while the master suite features a large walk-through-robe and ensuite. To top it off, this home has a versatile second living area, which could be used as a sitting room or home theatre. This design is also available in a smaller 211 and a larger 245 size. (Optional facade)



AIRLIE 230

Residence (m ²)	172.26
Garage (m ²)	36.08
Porch (m ²)	5.07
Alfresco (m ²)	16.38
Total (m ²)	229.79
Total (sqs.)	24.74

Width (m)	12.71
Length (m)	21.11

ROOM SIZES	(width x length)
Master Suite	3.83m x 3.60m
Bedroom 2	3.02m x 3.00m
Bedroom 3	3.00m x 3.00m
Bedroom 4	3.00m x 3.00m
Family	4.11m x 3.50m
Dining	4.11m x 3.46m
Living	3.36m x 3.50m
Garage	5.50m x 6.00m



ALDEN



TAKE ADVANTAGE OF YOUR SURROUNDINGS IN THE ALLURING ALDEN.

The hero of the Alden 312 is the expansive entertaining area which features the kitchen, family and dining area and sits adjacent to the alfresco, the perfect place to relax and enjoy your home. You will find the lavish master suite in the centre of the home, complete with an ensuite with double basins and dual walk-in-robos. The remaining three bedrooms are located on the right side of the home, reducing any noise disturbances for sleeping children. You will also find a rumpus and study on this side of the home, an ideal place for both playing and learning. Offering plenty of storage, plus an additional living area which could be used as a home theatre, the Alden 312 has it all and more. This design is also available in smaller 273 and 292 sizes.

(Optional Jarrah facade)



ALDEN 312

Residence (m ²)	249.29
Garage (m ²)	37.62
Porch (m ²)	4.51
Alfresco (m ²)	20.11
Total (m ²)	311.53
Total (sqs.)	33.53

Width (m) 31.51

Length (m) 14.12

ROOM SIZES	(width x length)
Master Suite	4.40m x 3.95m
Bedroom 2	3.27m x 3.18m
Bedroom 3	3.28m x 3.18m
Bedroom 4	3.28m x 3.32m
Family	5.03m x 4.81m
Dining	3.72m x 5.65m
Living	3.74m x 3.89m
Rumpus	4.00m x 3.23m
Study	1.80m x 3.23m
Garage	5.54m x 6.00m



COOLOOLA



A BEAUTIFUL HOME WITH BIG FEATURES THAT WILL DELIGHT AND CHARM.

The Cooloola 208 makes coming home feel like a holiday, everyday. The master suite is a true parents' paradise complete with a unique walk-through-robe and ensuite. The heart of the home houses the beautiful open-plan kitchen, dining and family area which wraps around a gorgeous alfresco, creating the perfect blend of indoor outdoor living. The versatile, semi-enclosed living area rounds off this sensational design. Packed full of charming qualities, the Cooloola 208 features everything you and your family could ever need. (Optional facade)



COOLOOLA 208

Residence (m ²)	155.63
Garage (m ²)	37.66
Porch (m ²)	2.62
Alfresco (m ²)	11.78
Total (m ²)	207.69
Total (sqsq.)	22.36

Width (m)	14.26
Length (m)	18.39

ROOM SIZES	(width x length)
Master Suite	3.36m x 3.60m
Bedroom 2	3.21m x 3.00m
Bedroom 3	3.21m x 3.08m
Bedroom 4	2.96m x 3.02m
Family	3.70m x 4.62m
Dining	3.34m x 3.19m
Living	3.02m x 4.05m
Garage	5.73m x 6.00m



DAKOTA



COMBINING MODERN DESIGN AND LUXURY, THE DAKOTA IS AN IDEAL FAMILY HOME.

The Dakota 267 is the next dimension in maximum family comfort. The central hub of the home is made up of the sizeable open-plan kitchen, family and dining area with access to the alfresco. Key features to note include the twin walk-in-ropes and ensuite to the master suite, three remaining bedrooms with built-in-ropes, a unique kitchen with a walk-in-pantry and direct access to the double garage. If that wasn't already enough, the home also includes a multipurpose living room that could be used as a home theatre or formal living room. This design is also available in a smaller 237 size and larger 316 size.

(Optional Aurora facade)



DAKOTA 267

Residence (m ²)	207.75
Garage (m ²)	36.36
Porch (m ²)	3.28
Alfresco (m ²)	19.49
Total (m ²)	266.88
Total (sqs.)	28.73

Width (m) 14.79

Length (m) 20.12

ROOM SIZES	(width x length)
Master Suite	3.70m x 4.32m
Bedroom 2	3.01m x 3.00m
Bedroom 3	3.01m x 3.00m
Bedroom 4	3.25m x 3.00m
Family	4.59m x 7.09m
Dining	3.30m x 5.94m
Living	3.34m x 4.75m
Garage	5.50m x 6.01m



EASTON



A CONTEMPORARY DESIGN PACKED FULL OF TRADITIONAL COMFORTS.

The Easton 259 encapsulates family living, with entertainment at the heart of this modern home. It features four spacious bedrooms, while the master is complete with a generous walk-through-robe and ensuite with double vanity. The centrally located kitchen leads into a spacious walk-in-pantry and overlooks the family and dining area, combining indoor outdoor living by opening up to a large alfresco. A second living area could also be used as a home theatre, providing plenty of space for your entire family. A clever study nook is located in the hallway, while the remaining three bedrooms offer convenient access to the bathroom facilities. The Easton 259 provides all the necessary features for any growing family. (Optional Eclipse facade)



EASTON 259

Residence (m ²)	205.26
Garage (m ²)	36.40
Porch (m ²)	2.46
Alfresco (m ²)	14.43
Total (m ²)	258.55
Total (sqsq.)	27.83

Width (m)	12.71
Length (m)	22.43

ROOM SIZES	(width x length)
Master Suite	3.63m x 3.89m
Bedroom 2	3.48m x 3.00m
Bedroom 3	3.00m x 3.00m
Bedroom 4	3.00m x 3.00m
Family	4.31m x 6.59m
Dining	2.82m x 4.39m
Living	3.63m x 4.80m
Garage	5.51m x 6.00m



ERSKINE



THE ERSKINE DEMONSTRATES FAMILY VERSATILITY AT ITS FINEST.

The Erskine 240 boasts a clever family friendly layout that makes this the ideal home. Three of the four bedrooms feature built-in-robos, while the master suite contains a walk-in-robe and spacious ensuite. The rear of the home is where the large kitchen, dining and family area can be found complete with a large alfresco area. The lounge room is versatile and can be used as a rumpus or home theatre to suit your family. This design is also available in smaller 202 and 225 sizes, where the 225 suits a narrow 12.5m block, and larger 260 and 290 sizes. (Optional facade)



ERSKINE 240

Residence (m ²)	181.36
Garage (m ²)	38.06
Porch (m ²)	2.39
Alfresco (m ²)	18.63
Total (m ²)	240.44
Total (sq.s.)	25.88

Width (m) 12.65

Length (m) 22.18

ROOM SIZES	(width x length)
Master Suite	3.10m x 4.32m
Bedroom 2	3.00m x 3.02m
Bedroom 3	3.43m x 3.17m
Bedroom 4	3.00m x 3.00m
Family	3.59m x 5.12m
Dining	2.72m x 5.12m
Lounge	3.50m x 4.52m
Garage	5.80m x 6.00m



EUREKA



THE EUREKA IS PERFECT FOR YOUR GROWING FAMILY.

The Eureka 263 is a perfectly proportioned family home. As you enter you are welcomed by a formal living area before moving through to the large open-plan kitchen, family and dining area. Complete with an alfresco, this space creates the perfect entertaining area combining indoor outdoor living. The master suite is a key feature of the home boasting a spacious walk-in-robe and oversized ensuite, it truly is the ultimate parents' haven. An additional three bedrooms have been conveniently zoned away and wrap around the central family bathroom. This design is also available in a smaller 251 size. (Optional Nova facade)



EUREKA 263

Residence (m ²)	202.31
Garage (m ²)	39.05
Porch (m ²)	3.30
Alfresco (m ²)	18.24
Total (m ²)	262.90
Total (sq.s.)	28.30

Width (m)	13.65
Length (m)	19.73

ROOM SIZES	(width x length)
Master Suite	3.57m x 3.84m
Bedroom 2	3.07m x 3.30m
Bedroom 3	3.07m x 3.44m
Bedroom 4	3.25m x 3.00m
Family	5.97m x 4.58m
Dining	3.62m x 3.89m
Living	4.52m x 3.80m
Study	3.44m x 1.73m
Garage	5.80m x 6.01m



HUME



THE HUME IS SPACIOUS, MODERN AND A MUST-SEE!

The Hume 263 exudes maximum comfort for you and your family. The master suite features an amazing walk-in-robe and a uniquely designed ensuite, and is located at the rear of the home for parental privacy. The open-plan kitchen, dining and family area is connected to the alfresco, offering year-round entertainment. The home has three other spacious bedrooms, a clever study nook, as well as a second, semi-private living area, perfect for growing children. This design is the ultimate family home and is also available in a smaller 244 size. (Optional Arlo facade)



HUME 263

Residence (m ²)	203.34
Garage (m ²)	38.36
Porch (m ²)	3.84
Alfresco (m ²)	17.56
Total (m ²)	263.10
Total (sqs.)	28.32

Width (m)	15.52
Length (m)	20.80

ROOM SIZES	(width x length)
Master Suite	3.65m x 4.00m
Bedroom 2	3.00m x 3.10m
Bedroom 3	3.00m x 3.00m
Bedroom 4	3.00m x 3.00m
Family	4.30m x 5.72m
Dining	2.55m x 5.72m
Living	3.34m x 4.55m
Garage	5.80m x 6.00m



ICELYN



4  2  2 

ICELYN 243

Residence (m ²)	200.17
Garage (m ²)	37.69
Porch (m ²)	4.85
Total (m ²)	242.71
Total (sqsq.)	26.13

Width (m)	12.71
Length (m)	21.33

ROOM SIZES	(width x length)
Master Suite	4.43m x 3.63m
Bedroom 2	3.06m x 3.20m
Bedroom 3	3.06m x 3.20m
Bedroom 4	3.06m x 3.22m
Family	4.43m x 5.86m
Dining	3.79m x 4.75m
Living	3.59m x 3.80m
Garage	5.75m x 6.00m

CALLING ALL ENTERTAINERS, THE IDYLIC ICELYN COULD BE YOUR VERY OWN SANCTUARY.

Step into the Icelyn 243's expansive entryway and you will be impressed by the large kitchen, family and dining area. The rear of the home houses a spacious master suite which features a unique walk-through-robe and ensuite, complete with his and her basins. The remaining three bedrooms all feature built-in-ropes and have been cleverly zoned away from the main entertaining area. This side of the home also offers easy access from the double garage, family bathroom and powder room, plus an additional living room, providing the perfect place for your kids to play. (Optional Harper facade)



IRIS



LIVE A LIFE OF LUXURY IN THE IRRESISTIBLE IRIS.

Boasting four large bedrooms and two bathrooms, plus a powder room, the Iris 237 is spectacular and spacious. Upon entering you are welcomed into the versatile living room. The centre of the home features a large open-plan kitchen and spacious walk-in-pantry. Everyday living is easy with the generous family and dining area which leads out onto an alfresco. You will find the master suite at the rear of the home. A modern day parents' hideaway, it features a large walk-in-robe and ensuite with a double vanity. The design also features a double garage with internal access, study nook and plenty of room for storage.

(Optional Odyssey facade)



IRIS 237

Residence (m ²)	188.26
Garage (m ²)	36.05
Porch (m ²)	2.33
Alfresco (m ²)	10.77
Total (m ²)	237.41
Total (sq.s.)	25.56

Width (m) 12.71

Length (m) 20.39

ROOM SIZES	(width x length)
Master Suite	3.56m x 3.65m
Bedroom 2	3.00m x 3.00m
Bedroom 3	3.00m x 3.00m
Bedroom 4	3.00m x 3.00m
Family	5.49m x 4.61m
Dining	3.19m x 3.03m
Living	4.20m x 3.00m
Garage	5.50m x 6.00m



JAGERA



LET THE STUNNING JAGERA BE THE PLACE YOUR FAMILY CALLS HOME.

Spanning just over 31 squares, the Jagera 294 begins with a formal living area positioned off the entrance hall leading to a separate open-plan kitchen, dining and family area with access to the alfresco. The kitchen is spacious and is complete with an island bench and luxurious walk-in-pantry. The master suite is located at the rear of the home and contains a large walk-in-robe and ensuite with a double vanity. The home also contains three additional bedrooms, a central bathroom and separate study, an ideal space for growing children. This design is also available in a smaller 250 size.



(Optional facade)

JAGERA 294

Residence (m ²)	225.53
Garage (m ²)	40.11
Porch (m ²)	3.68
Alfresco (m ²)	24.76
Total (m ²)	294.08
Total (sqs.)	31.66

Width (m) 13.00

Length (m) 25.52

ROOM SIZES	(width x length)
Master Suite	4.37m x 3.79m
Bedroom 2	3.29m x 3.19m
Bedroom 3	2.85m x 3.58m
Bedroom 4	2.85m x 3.58m
Family	4.03m x 5.71m
Dining	4.53m x 3.64m
Living	4.60m x 4.95m
Study	2.89m x 3.70m
Garage	6.09m x 6.00m



JAMIESON



THE JAMIESON WAS DESIGNED FOR ENTERTAINING IN STYLE.

The modern features of the Jamieson 250 make it perfect for a large family. The spacious master suite provides an ideal space for you to relax, featuring a walk-through-robe and hidden ensuite. The home also boasts an additional three bedrooms, all with built-in-robos. The heart of the home was designed for entertaining, complete with an open-plan kitchen, family and dining area which overlooks the alfresco. The home also features a spacious home theatre, second living room, mud room and double garage. The design is practical, functional, versatile and is also available in a smaller 225 and larger 286 size. (Optional Argyle facade)



JAMIESON 250

Residence (m ²)	198.76
Garage (m ²)	36.28
Porch (m ²)	3.02
Alfresco (m ²)	11.54
Total (m ²)	249.60
Total (sqs.)	26.87

Width (m)	14.99
Length (m)	19.79

ROOM SIZES	(width x length)
Master Suite	3.59m x 3.98m
Bedroom 2	3.59m x 3.00m
Bedroom 3	2.99m x 3.32m
Bedroom 4	2.99m x 3.32m
Family	4.83m x 5.00m
Dining	4.42m x 3.63m
Living	3.58m x 3.63m
Home Theatre	4.15m x 3.23m
Garage	5.51m x 6.00m



KIRKBY



WITH PLENTY OF SPACE TO UNWIND, THE KIRKBY IS YOUR ULTIMATE FAMILY HOME.

With four bedrooms and two bathrooms, the Kirkby 259 is perfect for larger families. With three separate living areas, there is plenty of space for everyone in this home. The kitchen boasts a large walk-in-pantry, perfect for those who love to cook. The spacious open-plan living area features a study nook and acts as the heart of the home. The standout feature is the alfresco which connects directly to the kitchen and rumpus, creating the perfect blend of indoor outdoor living. The master suite is cleverly separated from the other bedrooms and features a walk-in-robe and ensuite. The Kirkby is also available in a smaller 246 size and larger 267 size.



KIRKBY 259

Residence (m ²)	196.17
Garage (m ²)	36.07
Porch (m ²)	2.37
Alfresco (m ²)	24.45
Total (m ²)	259.06
Total (sq.s.)	27.89

Width (m) 12.93

Length (m) 22.29

ROOM SIZES	(width x length)
Master Suite	3.59m x 3.50m
Bedroom 2	3.24m x 3.00m
Bedroom 3	3.14m x 3.00m
Bedroom 4	3.00m x 3.00m
Family	3.50m x 5.90m
Dining	3.71m x 5.41m
Living	3.84m x 3.50m
Rumpus	3.00m x 2.92m
Garage	5.50m x 6.00m



(Optional facade)

LANSDOWNE



THE LANSDOWNE OFFERS SOMETHING FOR EVERY FAMILY MEMBER.

Featuring four bedrooms and three living areas, the Lansdowne 304 makes coming home a delight. Upon entry you are welcomed past a private and versatile living room, through to the oversized open-plan kitchen, family and dining room. A standout feature of the design, the kitchen is complete with a walk-in-pantry and leads out to the huge alfresco. The master suite sits at one end of the home, boasting two walk-in-robbers and an ensuite, while the remaining bedrooms all feature built-in-robbers and can be found at the opposite end of the home. Featuring a large study, rumpus and double garage with direct access into the home, the Lansdowne 304 is the ultimate family home. This design is also available in smaller 204, 248 and 282 sizes.

(Optional Phoenix facade)



LANSDOWNE 304

Residence (m ²)	235.75
Garage (m ²)	40.87
Porch (m ²)	1.02
Alfresco (m ²)	25.89
Total (m ²)	303.53
Total (sq.s.)	32.67

Width (m) 29.98

Length (m) 16.09

ROOM SIZES	(width x length)
Master Suite	3.97m x 4.64m
Bedroom 2	3.15m x 3.40m
Bedroom 3	3.15m x 3.40m
Bedroom 4	3.25m x 3.05m
Family	5.27m x 4.69m
Dining	6.66m x 2.88m
Living	4.79m x 4.86m
Rumpus	3.31m x 3.49m
Study	3.09m x 3.45m
Garage	5.80m x 6.00m



LUCA



THE LAVISH LUCA IS THE ULTIMATE IN EVERYDAY LIVING.

The Luca 260 boasts four large bedrooms and two separate living areas. A stunning parents' paradise, you will find the master suite at the front of the home. It features a large walk-in-robe, plus an ensuite with double basins. The heart of the home is an entertainer's haven, complete with a huge kitchen with an island bench, plus a family and dining area. It also includes a spacious walk-in-pantry and laundry, as well as an easy to access alfresco. The rear of the home was designed for the kids, featuring three additional bedrooms, all with built-in-robos, which wrap around a central living room. This area also houses a family bathroom and a conveniently located study nook. The Luca 260 could be your ultimate home. (Optional Quinn facade)



LUCA 260

Residence (m ²)	204.99
Garage (m ²)	36.28
Porch (m ²)	2.54
Alfresco (m ²)	16.15
Total (m ²)	259.96
Total (sqsq.)	27.98

Width (m)	12.70
Length (m)	22.43

ROOM SIZES	(width x length)
Master Suite	3.44m x 4.09m
Bedroom 2	3.04m x 3.02m
Bedroom 3	3.04m x 3.00m
Bedroom 4	3.00m x 3.00m
Family	5.03m x 4.74m
Dining	4.41m x 3.87m
Living	4.20m x 4.79m
Garage	5.51m x 6.00m



MARCOOLA



THE MAGNIFICENT MARCOOLA BALANCES PRACTICALITY AND LUXURY TO PERFECTION.

The Marcoola 245 is a modern-day marvel, complete with two spacious living areas and easy access from the double garage. The master suite is located at the front of the home for your convenience and features an oversized walk-in-robe and ensuite. Three remaining bedrooms line one side of the home and are connected by a clever study nook and family bathroom. The heart of the home is where the main family area can be found, complete with a large kitchen and a walk-through-pantry which leads to the laundry. This area also houses a family and dining area, plus a spacious alfresco which can also be accessed by the rumpus. This design is also available in a smaller 209 size and larger 269 and 270 sizes.



MARCOOLA 245

Residence (m ²)	188.10
Garage (m ²)	36.19
Porch (m ²)	2.43
Alfresco (m ²)	18.11
Total (m ²)	244.83
Total (sq.s.)	26.35

Width (m)	12.90
Length (m)	22.56

ROOM SIZES	(width x length)
Master Suite	3.53m x 4.35m
Bedroom 2	3.10m x 3.19m
Bedroom 3	3.00m x 3.16m
Bedroom 4	3.00m x 3.13m
Family	4.35m x 5.17m
Dining	5.38m x 3.10m
Rumpus	3.80m x 3.92m
Garage	5.50m x 6.00m

(Optional facade)





A MODERN AND FUNCTIONAL FAMILY HOME THAT TICKS EVERY BOX.

The McRae 250 has everything you and your family could ever want, and more! The master suite is located at the front of the home and is the ideal parents' retreat, complete with two walk-in-robos and an ensuite with double vanity. The heart of the home is where the open-plan kitchen, family and dining area can be found. It also boasts a large walk-in-pantry, study nook and alfresco. This entertainers' delight features a versatile living area, two additional bedrooms and a practical rumpus room or kids' zone, making it the perfect design for families at every stage of life.

(Optional facade)

3 2 2

McRAE 250

Residence (m ²)	190.49
Garage (m ²)	37.91
Porch (m ²)	3.66
Alfresco (m ²)	18.01
Total (m ²)	250.07
Total (sq.s.)	26.92

Width (m)	16.40
Length (m)	18.97

ROOM SIZES	(width x length)
Master Suite	3.43m x 4.56m
Bedroom 2	3.06m x 3.00m
Bedroom 3	3.01m x 3.43m
Family	5.52m x 5.02m
Dining	3.00m x 3.90m
Living	3.26m x 4.38m
Rumpus	3.26m x 4.03m
Garage	5.76m x 6.00m



MICA



VERSATILITY MEETS STYLE IN THE MAGNIFICENT MICA.

Space is at the heart of the Mica 283, featuring four large bedrooms plus a separate rumpus, offering every member of your family a place to unwind. Three bedrooms are all in close proximity to the bathroom and are located near the formal living room. The generous master suite is complete with a large ensuite and luxurious walk-in-robe. An island bench and walk-in-pantry are key features of the spacious open-plan kitchen which overlooks a casual living area, dining room and alfresco. There is a third living area in the centre of the home which can be used as a rumpus or home theatre. The Mica 283 is a stunning family home, and is also available in a smaller 260 size and larger 331 size.



MICA 283

Residence (m ²)	222.29
Garage (m ²)	36.25
Porch (m ²)	0.80
Alfresco (m ²)	16.20
Patio (m ²)	7.26
Total (m ²)	282.80
Total (sq.s.)	30.44

Width (m)	12.71
Length (m)	24.47

ROOM SIZES	(width x length)
Master Suite	4.32m x 3.88m
Bedroom 2	3.00m x 3.00m
Bedroom 3	3.00m x 3.00m
Bedroom 4	3.00m x 3.00m
Family	4.91m x 5.46m
Dining	3.12m x 5.31m
Living	4.91m x 4.56m
Rumpus	3.62m x 3.43m
Garage	5.51m x 6.00m

(Optional Aspen facade)



NORTHCOTE



SMART, PRACTICAL AND STYLISH, THE NORTHCOTE IS THE PERFECT FIT FOR YOUR FAMILY.

The beauty of the Northcote 208 can be found in its compact design. Cleverly crafted to maximise space, all four bedrooms can be found on the right side of the home. The master suite can be found near the entrance and is complete with dual walk-in-ropes and a spacious ensuite. The centrally located entertaining area features an open-plan kitchen with corner pantry, family and dining room which opens to the large alfresco. It also boasts easy access via the double garage and ample storage space. (Optional facade)



NORTHCOTE 208

Residence (m ²)	158.51
Garage (m ²)	36.21
Porch (m ²)	2.45
Alfresco (m ²)	10.79
Total (m ²)	207.96
Total (sq.s.)	22.39

Width (m)	13.02
Length (m)	17.36

ROOM SIZES	(width x length)
Master Suite	3.72m x 3.71m
Bedroom 2	3.25m x 3.13m
Bedroom 3	3.25m x 3.10m
Bedroom 4	3.25m x 3.70m
Family	4.25m x 4.67m
Dining	4.25m x 2.53m
Garage	5.50m x 6.00m



ORION



IT'S EASY TO SEE HOW THE ORION COULD BE YOUR PERFECT OASIS.

The Orion 228 is a large design with plenty of space for your growing family. Four bedrooms can be found along one side of the home with the master suite featuring a walk-in-robe and ensuite. You will find the heart of the home at the rear which features a large open-plan kitchen, dining and family area. The kitchen is complete with a spacious walk-in-pantry and is located near a semi-enclosed study area. This design is perfect for taking advantage of the afternoon sun with an alfresco adjoining the central living area. With a large home theatre, double garage and hidden laundry, the Orion 228 makes everyday living easy. (Optional Haven facade)



ORION 228

Residence (m ²)	174.95
Garage (m ²)	36.28
Porch (m ²)	2.76
Alfresco (m ²)	14.16
Total (m ²)	228.15
Total (sq.s.)	24.56

Width (m)	11.13
Length (m)	22.67

ROOM SIZES	(width x length)
Master Suite	3.35m x 3.75m
Bedroom 2	3.10m x 3.00m
Bedroom 3	3.10m x 3.00m
Bedroom 4	3.10m x 3.00m
Family	3.17m x 5.50m
Dining	3.10m x 4.90m
Home Theatre	3.17m x 4.76m
Study	2.13m x 2.57m
Garage	5.51m x 6.00m



SOMERSET



THE SENSATIONAL SOMERSET IS THE EPITOME OF SPACE AND STYLE.

The Somerset 233 is the perfect home for your large family. The open-plan kitchen, family and dining area is directly connected to the outdoor alfresco. The master suite features a walk-in-robe and ensuite, and is separated from the other bedrooms for privacy. The second living area offers versatility, and can be converted into another bedroom, home theatre or study, whatever your family requires. Clever nooks for your TV, computer and extra storage exist throughout this home. (Optional facade)



SOMERSET 233

Residence (m ²)	178.91
Garage (m ²)	38.22
Porch (m ²)	3.03
Alfresco (m ²)	13.19
Total (m ²)	233.35
Total (sqs.)	25.12

Width (m)	12.80
Length (m)	20.70

ROOM SIZES	(width x length)
Master Suite	4.20m x 3.40m
Bedroom 2	3.00m x 3.12m
Bedroom 3	3.00m x 3.44m
Bedroom 4	3.16m x 3.00m
Family	4.00m x 5.15m
Dining	2.96m x 5.15m
Living	3.93m x 3.70m
Garage	5.80m x 6.00m



STOCKTON



4 2.5 2

STOCKTON 380

Residence (m ²)	298.35
Garage (m ²)	47.82
Porch (m ²)	2.81
Alfresco (m ²)	30.70
Total (m ²)	379.68
Total (sq.s.)	40.87

Width (m) 38.51

Length (m) 14.52

ROOM SIZES	(width x length)
Master Suite	4.49m x 3.78m
Bedroom 2	3.13m x 3.51m
Bedroom 3	3.10m x 3.51m
Bedroom 4	3.10m x 3.51m
Family	5.39m x 5.10m
Dining	5.40m x 4.36m
Living	4.87m x 3.31m
Rumpus	2.98m x 3.69m
Home Theatre	3.63m x 4.96m
Study	2.84m x 3.40m
Garage	5.90m x 6.36m

BE THE ENVY OF YOUR FRIENDS AND COME HOME TO THE SPRAWLING STOCKTON.

Featuring three separate entertaining zones at either end of this extensive home, you will be spoiled for choice with the Stockton 380. You and your family will love the large and inviting open-plan kitchen, family and dining area which sits adjacent to the alfresco. The master suite has been cleverly zoned away from the bedrooms and features dual walk-in-ropes and an ensuite with double basins. This side of the home also offers easy access to the double garage, a powder room, living room and large study. The right side of the home is perfect for the kids, featuring three bedrooms, all with built-in-ropes, which sweep around a rumpus, plus a family bathroom and home theatre. The Stockton 380 offers everything a growing family could ever need to live in comfort and style. It is also available in a smaller 322 size. (Optional Bronson facade)



TARKINE



THE GORGEOUS TARKINE IS THE PERFECT HOME FOR ALL AGES.

The Tarkine 238 represents true family living, complete with an open-plan kitchen, dining and family area, plus an alfresco and neatly tucked away study. The kitchen is a standout feature of the home with a large walk-through-pantry and plenty of bench space. The home also has a private living room, which you could use as a sitting room, home theatre or rumpus, depending on your family's requirements. An additional three bedrooms, family bathroom and double garage round off this great family home. This design is also available in a smaller 198 size. (Optional facade)



TARKINE 238

Residence (m ²)	188.39
Garage (m ²)	36.23
Porch (m ²)	2.08
Alfresco (m ²)	11.25
Total (m ²)	237.95
Total (sqsq.)	25.61

Width (m)	11.27
Length (m)	24.00

ROOM SIZES	(width x length)
Master Suite	3.71m x 3.71m
Bedroom 2	2.99m x 3.16m
Bedroom 3	3.01m x 3.23m
Bedroom 4	3.01m x 3.21m
Family	5.29m x 5.03m
Dining	3.30m x 3.54m
Living	3.18m x 4.48m
Garage	5.51m x 6.00m





IF YOU'RE AFTER A HOME FOR YOUR GROWING FAMILY, LOOK NO FURTHER THAN THE VIDA.

Upon entry into the Vida 238, you will find a luxurious master suite, featuring a walk-in-robe and ensuite with double vanity. Moving through to the centre of the home is the open-plan kitchen, family and dining area which cleverly creates the illusion of more space and overlooks the stunning alfresco. The remaining three bedrooms feature built-in-robos and are located in the back corner of the home along with an additional living space, ideal for growing children. This beautiful design is also available in an alternate version. (Optional Moreton facade)



VIDA 238

Residence (m ²)	186.68
Garage (m ²)	36.28
Porch (m ²)	3.99
Alfresco (m ²)	10.65
Total (m ²)	237.60
Total (sqsq.)	25.58

Width (m)	12.57
Length (m)	20.62

ROOM SIZES	(width x length)
Master Suite	4.07m x 3.77m
Bedroom 2	3.21m x 3.00m
Bedroom 3	3.03m x 3.02m
Bedroom 4	3.02m x 3.02m
Family	3.90m x 6.23m
Dining	4.60m x 3.65m
Living	4.32m x 3.70m
Garage	5.51m x 6.00m



VIDA ALT



YOU'LL LOVE COMING HOME TO THE VIDA ALT.

Upon entry you will find a luxurious master suite, featuring a walk-in-robe and ensuite with double vanity. Moving through to the centre of the home is where you will find the open-plan kitchen, family and dining area which cleverly creates the illusion of more space and overlooks the stunning alfresco. The remaining three bedrooms feature built-in-robos and are located in the back corner of the home along with an additional living space, ideal for growing children. This beautiful design is also available in an alternate version. (Optional facade)



4 2 2

VIDA 238 ALT

Residence (m ²)	186.68
Garage (m ²)	36.28
Porch (m ²)	3.99
Alfresco (m ²)	10.65
Total (m ²)	237.60
Total (sqs.)	25.58

Width (m)	12.57
Length (m)	20.62

ROOM SIZES	(width x length)
Master Suite	4.07m x 3.77m
Bedroom 2	3.21m x 3.00m
Bedroom 3	3.03m x 3.02m
Bedroom 4	3.02m x 3.02m
Family	3.88m x 5.63m
Dining	4.60m x 3.65m
Living	4.32m x 4.21m
Garage	5.51m x 6.00m



WILLOWGROVE



THE WILLOWGROVE IS A LARGE AND LUXURIOUS DESIGN IDEAL FOR GROWING FAMILIES.

Featuring a spacious alfresco, home theatre and formal living area, the Willowgrove 332 provides the perfect space for entertaining, whether you're enjoying a beautiful summer evening, hosting a movie night or simply enjoying your family's company. The master suite has been zoned for privacy and features a large walk-in-robe and spacious ensuite with a double vanity. In the heart of the home you'll find the open-plan kitchen, dining and family area. This stunning design is equipped with a double garage, study nook and plenty of storage space creating a home that is both practical and stylish.



(Optional facade)

WILLOWGROVE 332

Residence (m ²)	254.82
Garage (m ²)	39.83
Porch (m ²)	4.25
Alfresco (m ²)	32.96
Total (m ²)	331.86
Total (sqs.)	35.72

Width (m) 14.80

Length (m) 24.37

ROOM SIZES	(width x length)
Master Suite	4.87m x 3.87m
Bedroom 2	3.21m x 3.18m
Bedroom 3	3.40m x 3.14m
Bedroom 4	3.20m x 3.13m
Family	4.96m x 5.34m
Dining	3.67m x 4.00m
Living	3.49m x 4.52m
Home Theatre	4.31m x 3.81m
Study	2.27m x 3.16m
Garage	5.60m x 6.41m



YERING



THE YERING WILL BE YOUR OWN PRIVATE HIDEAWAY.

Step inside the spacious Yering 248 and you will be impressed by what it has to offer. The large master suite is the perfect parents' hideaway. Located on the left side of the home, it's complete with a walk-through-robe into the ensuite with dual basins. The heart of the home is where the generous entertaining area can be found, featuring a kitchen with island bench, huge walk-in-pantry, dining area and family room which sits adjacent to the spacious alfresco. The right side of the home is where the remaining three bedrooms can be found. They wrap around a central rumpus room, bathroom, powder room and study, creating a private space for children to grow. The centre of the home also features a versatile living room which could be used as a home theatre. The Yering 248 is also available with a double garage and in a smaller 207 size. (Optional Hudson facade)

4 2.5 0

YERING 248

Residence (m ²)	219.81
Porch (m ²)	2.10
Alfresco (m ²)	26.10
Total (m ²)	248.01
Total (sqs.)	26.70

Width (m)	22.79
Length (m)	12.35

ROOM SIZES	(width x length)
Master Suite	3.90m x 4.05m
Bedroom 2	3.01m x 3.00m
Bedroom 3	3.16m x 3.00m
Bedroom 4	3.16m x 3.00m
Family	4.52m x 4.34m
Dining	4.74m x 2.71m
Living	3.84m x 4.16m
Rumpus	4.36m x 3.53m
Study	1.98m x 2.53m



YERING ALT



OFFERING PLENTY OF SPACE FOR EVERY FAMILY MEMBER.

Step through the doors of the expansive Yering 248 Alt and you will be impressed by what it has to offer. All four bedrooms have been conveniently zoned to the left side of the home, while the expansive family area can be found on the right. The large master suite is the perfect parents' hideaway, featuring a walk-in-robe, plus an ensuite with double basins. The remaining bedrooms are located nearby and wrap around a family bathroom, powder room and rumpus room. The opposite side of the home is where you will find the generous entertaining area which boasts a huge kitchen with an island bench and walk-in-pantry, plus a family room, living room and dining area which leads out to the alfresco. The Yering 248 Alt is also available with a double garage and in a smaller 207 size. (Optional facade)

4 2.5 0

YERING 248 ALT

Residence (m ²)	222.55
Porch (m ²)	2.10
Alfresco (m ²)	23.49
Total (m ²)	248.14
Total (sq.s.)	26.71

Width (m) 22.79

Length (m) 13.43

ROOM SIZES	(width x length)
Master Suite	3.60m x 3.99m
Bedroom 2	3.00m x 3.00m
Bedroom 3	3.00m x 3.00m
Bedroom 4	3.00m x 3.00m
Family	4.43m x 4.79m
Dining	4.41m x 3.12m
Living	3.82m x 3.84m
Rumpus	3.92m x 3.51m
Study	2.19m x 3.60m





Double Storey

Take your home to the next level

Elevate your dream home aspirations and come home to your own double storey sanctuary. An ideal fit for your growing family, these designs offer an abundance of space, allowing you to take advantage of your surroundings.

#All floor plans, facade images and internal photos shown are provided for illustrative purposes only and are not drawn to scale. The dimensions provided of 'width' and 'length' are the dimensions to the structural frame. No allowances have been made for any council regulations or estate requirements. It is the home owner's responsibility to ensure that the house will fit on their land and that all applicable council regulations and estate requirements are met. The images may contain items that are examples of upgrades available at an additional cost (eg. garage doors, entry doors, lighting). Images may also contain items not supplied by Hotondo Homes including furniture and wall hangings. Check with your local builder for the inclusions details. Hotondo Homes reserves the right to change plans, specifications, materials and suppliers without notice.



ACACIA



LARGE AND LAVISH, LET THE ACACIA BECOME YOUR FAMILY'S SANCTUARY.

Named after a large and striking tree, it's easy to see how the Acacia 261 could become the perfect sanctuary for you and your family to unwind. The ground floor is home to the second living room, laundry and open-plan kitchen which overlooks the dining and family area, making it the perfect space for everyday living. Upstairs you will find the master suite which contains the walk-in-robe and ensuite, plus the additional three bedrooms which sweep around a rumpus and central study. A versatile space for children of all ages, the rumpus makes a great play area or could be converted into a home theatre. With so many sought-after qualities, it's easy to see why the Acacia 261 is a popular design for many families. It's also available in an alternate version.

(Optional Moreton facade)

4 2.5 2

ACACIA 261

Ground Floor (m ²)	101.88
First Floor (m ²)	118.84
Garage (m ²)	36.57
Porch (m ²)	3.52
Total (m ²)	260.81
Total (sq.s.)	28.07

Width (m)	11.87
Length (m)	13.79

ROOM SIZES	(width x length)
Master Suite	3.59m x 3.89m
Bedroom 2	2.94m x 3.10m
Bedroom 3	2.94m x 3.10m
Bedroom 4	3.50m x 3.00m
Family	3.08m x 6.15m
Dining	3.18m x 5.26m
Living	3.59m x 3.88m
Rumpus	4.68m x 4.10m
Study	2.59m x 2.65m
Garage	5.51m x 6.00m



ACACIA ALT



A STUNNING FAMILY FRIENDLY DESIGN PACKED FULL OF FUNCTIONAL FEATURES.

Step inside the spacious Acacia 261 Alt and you will be impressed by what it has to offer. The ground floor features three of four bedrooms, all with built-in-robres, as well as the laundry, family bathroom and a generous living area, an ideal kids' hangout. Take the stairs up to the first floor and you will be welcomed into the open-plan entertaining area, complete with a huge kitchen, plus an island bench and walk-in-pantry, dining area and family room. Everyday living is easy with a centrally located powder room and study. This space also houses the oversized master suite which features an ensuite with his and her basins, and a walk-in-robe. With so many family friendly features, it's easy to see why the Acacia 261 Alt is the perfect family home. It is also available in an alternate version where the living and sleeping areas are reversed.

(Optional Flinders facade)

4 2.5 2

ACACIA 261 ALT

Ground Floor (m ²)	101.95
First Floor (m ²)	118.85
Garage (m ²)	36.51
Porch (m ²)	3.52
Total (m ²)	260.83
Total (sq.s.)	28.08

Width (m)	11.87
Length (m)	13.79

ROOM SIZES	(width x length)
Master Suite	3.60m x 3.89m
Bedroom 2	3.00m x 3.00m
Bedroom 3	3.00m x 3.00m
Bedroom 4	3.00m x 3.00m
Family	4.78m x 5.15m
Dining	4.09m x 3.60m
Living	5.78m x 3.60m
Study	2.93m x 3.00m
Garage	5.50m x 6.00m



ALAMEDA



THE ALAMEDA BOASTS MODERN FLAIR WITH PRACTICALITY.

Contemporary and chic are two words to describe the exceptional Alameda 254. Upon entering the home you are welcomed by a private living room and a modern staircase. The heart of the home is located at the rear and features a corner kitchen squared off with an alfresco. Upstairs you will find three bedrooms, a master suite featuring a unique walk-through-robe and well-appointed ensuite, a versatile rumpus and a media room, offering plenty of space for the entire family. Brimming with brilliant features, the Alameda 254 is the perfect place to begin the next chapter of your life.

(Optional Orana facade)



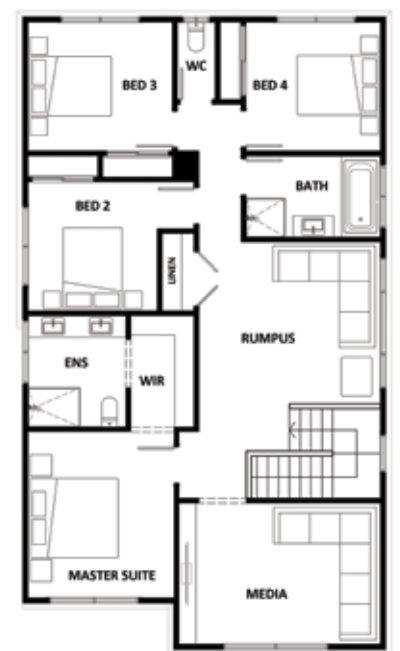
4 2.5 2

ALAMEDA 254

Ground Floor (m ²)	88.64
First Floor (m ²)	117.64
Garage (m ²)	36.19
Porch (m ²)	1.68
Alfresco (m ²)	9.70
Total (m ²)	253.85
Total (sq.s.)	27.33

Width (m)	10.43
Length (m)	14.87

ROOM SIZES	(width x length)
Master Suite	3.39m x 3.86m
Bedroom 2	3.00m x 3.00m
Bedroom 3	3.35m x 3.00m
Bedroom 4	3.12m x 3.00m
Family	4.79m x 4.62m
Dining	3.36m x 3.45m
Living	3.11m x 3.28m
Rumpus	4.21m x 3.76m
Media	4.67m x 3.28m
Garage	5.50m x 6.00m



CALVA



ENTERTAINING IS MADE EASY WITH THE CLEVERLY DESIGNED CALVA.

Open-plan living is at the heart of the Calva 303. This double storey home is a true family entertainment hub, featuring a spacious dining area which leads you out onto the alfresco. The kitchen was designed for hosting guests, complete with an oversized walk-in-pantry fit for an aspiring chef. The sweeping staircase draws you into the home from the entry foyer and takes you up to the first floor which houses four large bedrooms with ample storage, a study, plus a multipurpose rumpus room or home theatre.

(Optional facade)

4 2.5 2

CALVA 303

Ground Floor (m ²)	123.66
First Floor (m ²)	128.94
Garage (m ²)	36.16
Porch (m ²)	1.68
Alfresco (m ²)	12.24
Total (m ²)	302.68
Total (sq.s.)	32.58

Width (m)	10.55
Length (m)	18.83

ROOM SIZES	(width x length)
Master Suite	4.55m x 4.08m
Bedroom 2	3.15m x 3.00m
Bedroom 3	3.15m x 2.91m
Bedroom 4	3.15m x 3.09m
Family	4.31m x 5.51m
Dining	4.08m x 4.00m
Living	2.99m x 5.18m
Rumpus	5.15m x 3.51m
Study	2.00m x 2.79m
Garage	5.50m x 6.00m



ESPLANADE



COASTAL LIVING AT ITS FINEST WITH THE STUNNING ESPLANADE.

This four-bedroom home allows you to take advantage of your surroundings with the open-plan living area located on the second storey. The large kitchen features a walk-in-pantry and spacious island bench. You will find the master suite on the first floor, along with an expansive walk-through-robe and ensuite, creating the perfect private sanctuary for parents. The remaining three bedrooms are located on the ground floor along with a rumpus room, an ideal place for growing children. At only 11.8m wide, this design will suit slimmer blocks without compromising functionality. It is also available in a smaller 260 size. (Optional facade)

4 2.5 2

ESPLANADE 281

Ground Floor (m ²)	110.88
First Floor (m ²)	131.21
Garage (m ²)	36.38
Porch (m ²)	2.34
Total (m ²)	280.81
Total (sqs.)	30.23

Width (m)	11.80
Length (m)	15.84

ROOM SIZES	(width x length)
Master Suite	4.20m x 4.05m
Bedroom 2	3.30m x 3.28m
Bedroom 3	3.30m x 3.47m
Bedroom 4	2.92m x 3.04m
Family	4.93m x 5.99m
Dining	4.83m x 3.93m
Rumpus	4.45m x 4.02m
Study	2.83m x 3.61m
Garage	5.50m x 6.00m



HILLGROVE



SENSATIONAL SPLIT LEVEL LIVING WITH THE UNIQUE HILLGROVE.

Perfect for sloping blocks, the Hillgrove 234 spans across multiple levels. Cleverly zoned, the master suite is located on the entry level away from the rest of the family. You will find the kitchen, family and dining area on the lower floor, while the remaining bedrooms and rumpus can be found on the upper floor. The master bedroom features a stunning walk-through-robe that leads through to the ensuite. The expansive kitchen, family and dining area also includes its own powder room. The remaining bedrooms all surround a versatile rumpus space, perfect for growing children. The Hillgrove 234 is also available in an alternate design, with the living area on the upper level and the bedrooms on the lower level. It is also available in a larger 246 size with an alternative layout and a 267 size. (Optional Haven facade)



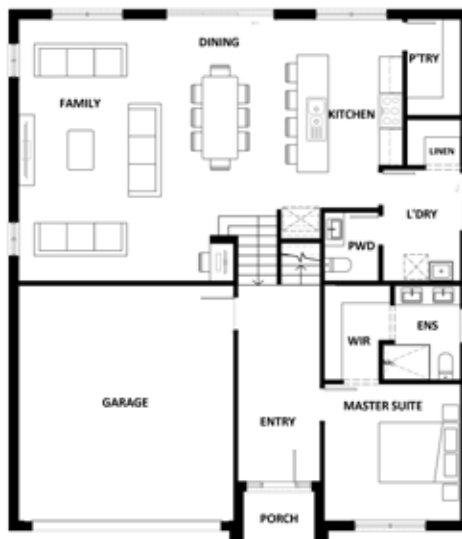
4 2.5 2

HILLGROVE 234

Ground Floor (m ²)	118.19
First Floor (m ²)	76.78
Garage (m ²)	36.17
Porch (m ²)	2.69
Total (m ²)	233.83
Total (sq.s.)	25.17

Width (m)	11.76
Length (m)	13.63

ROOM SIZES	(width x length)
Master Suite	3.49m x 3.50m
Bedroom 2	3.49m x 3.00m
Bedroom 3	3.49m x 3.00m
Bedroom 4	3.18m x 3.67m
Family	4.20m x 6.69m
Dining	2.79m x 5.03m
Rumpus	3.83m x 4.76m
Garage	5.50m x 6.03m



HILLGROVE ALT



COME HOME TO YOUR VERY OWN SPLIT LEVEL SANCTUARY.

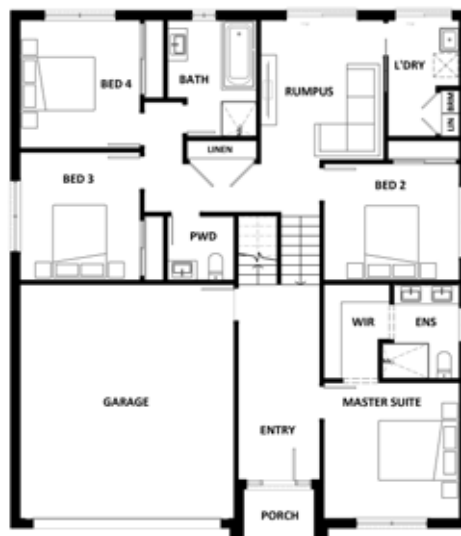
Designed specifically for sloping blocks, the unique Hillgrove 234 Alt was cleverly crafted to suit your family at every stage of life. The master suite can be found on the entry level, ideally zoned away from the rest of the family. The parents' retreat is complete with a walk-in-robe and ensuite with his and her basins. Take the stairs to the upper level and you will find the open-plan entertaining area which boasts the kitchen, living and dining area, walk-in-pantry, powder room and study nook. The lower level of the home comprises the remaining bedrooms, all with built-in-robres, as well as the laundry and versatile rumpus space. The Hillgrove 234 Alt is also available in an alternate version, with the living area on the lower level and the bedrooms on the upper level. It is also available in a larger 246 size with an alternate layout and 267 size. (Optional facade)

4 2.5 2

HILLGROVE 234 ALT

Ground Floor (m ²)	118.19
First Floor (m ²)	76.74
Garage (m ²)	36.17
Porch (m ²)	2.69
Total (m ²)	233.79
Total (sq.s.)	25.16
Width (m)	11.76
Length (m)	13.63

ROOM SIZES	(width x length)
Master Suite	3.49m x 3.50m
Bedroom 2	3.49m x 3.00m
Bedroom 3	3.09m x 3.30m
Bedroom 4	3.09m x 3.30m
Family	3.99m x 6.69m
Dining	3.00m x 5.03m
Rumpus	3.17m x 3.60m
Garage	5.50m x 6.03m



ILLAWARRA



HAVE THE BEST OF BOTH WORLDS WITH THE STRIKING AND SPACIOUS ILLAWARRA.

Step inside this stunning family home and you will be impressed by what it has to offer. A private living room can be found at the front of the home, while the ground floor was designed for entertaining, featuring a kitchen, family and dining area. The first floor is where all four bedrooms can be found, two of those featuring walk-in-robos. The bedrooms wrap around a versatile leisure room, which could be converted into a home theatre. Offering something for every member of your family, the Illawarra 215 could be your own modern-day sanctuary. (Optional Moreton facade)

4 2.5 2

ILLAWARRA 215

Ground Floor (m ²)	84.35
First Floor (m ²)	92.75
Garage (m ²)	36.68
Porch (m ²)	1.34
Total (m ²)	215.12
Total (sq.s.)	23.16

Width (m)	10.95
Length (m)	13.73

ROOM SIZES	(width x length)
Master Suite	3.65m x 4.00m
Bedroom 2	3.12m x 3.01m
Bedroom 3	3.07m x 3.49m
Bedroom 4	3.10m x 3.20m
Family	4.09m x 4.09m
Dining	2.77m x 4.09m
Living	3.69m x 4.35m
Leisure	4.16m x 2.90m
Garage	5.50m x 6.00m



JAXTON



THE JAXTON TAKES EXCEPTIONAL LIVING TO NEW HEIGHTS.

Upon entering the home you are welcomed by an open-plan living area as well as a beautiful staircase leading you to the upper level. Moving through the ground floor you will find the kitchen featuring a hidden space for your refrigerator and a walk-in-pantry. The dining and family area wraps cleverly around a large alfresco creating a stunning entertaining space for your guests. The upper level is where you will find the master suite with a walk-through-robe that leads through to the ensuite. An additional three spacious bedrooms are complete with built-in-ropes and have easy access to the rumpus area, an ideal place for growing children. The Jaxton 261 is a stunning double storey design that offers exceptional family living. (Optional facade)



4 2.5 2

JAXTON 261

Ground Floor (m ²)	100.09
First Floor (m ²)	109.72
Garage (m ²)	36.16
Porch (m ²)	1.77
Alfresco (m ²)	13.08
Total (m ²)	260.82
Total (sq.s.)	28.08

Width (m) 10.34
Length (m) 16.72

ROOM SIZES	(width x length)
Master Suite	3.67m x 3.50m
Bedroom 2	3.23m x 3.22m
Bedroom 3	3.23m x 3.20m
Bedroom 4	3.23m x 3.07m
Family	3.83m x 5.48m
Dining	4.27m x 3.20m
Living	2.78m x 3.76m
Rumpus	4.27m x 4.25m
Garage	5.50m x 6.00m



KALARA



THE REMARKABLE KALARA PRESENTS HIGH LEVEL STYLE AND DESIGN.

Suited perfectly to blocks that fall to the front, the Kalara 253 takes advantage of a slope to create the home of your dreams. Upon entering you will find a formal living area and one of four bedrooms, an ideal space for growing children or visiting guests. The main living areas can be found on the lower level of the home including a large study, family room and beautiful kitchen complete with a large walk-in-pantry. Ideal for taking advantage of your surroundings, the sleeping quarters can be found on the top floor along with an additional rumpus area and bathroom. The master suite also features an ensuite and L-shaped walk-in-robe. Building on a challenging block has never been so easy! The Kalara 253 is also available in an alternative design where the main living floor and sleeping quarters have been switched. (Optional Flinders facade)

4 2.5 2

KALARA 253

Ground Floor (m ²)	139.44
First Floor (m ²)	74.53
Garage (m ²)	36.34
Porch (m ²)	2.87
Total (m ²)	253.18
Total (sq.s.)	27.25

Width (m)	11.99
Length (m)	16.55

ROOM SIZES	(width x length)
Master Suite	3.74m x 3.51m
Bedroom 2	3.02m x 3.00m
Bedroom 3	3.00m x 3.00m
Bedroom 4	3.00m x 3.60m
Family	4.05m x 6.24m
Dining	3.10m x 6.24m
Living	4.19m x 3.38m
Rumpus	3.02m x 3.38m
Study	3.87m x 2.49m
Garage	5.51m x 6.00m



KALARA ALT



4 2.5 2

KALARA 253 ALT

Ground Floor (m ²)	139.44
First Floor (m ²)	73.94
Garage (m ²)	36.34
Porch (m ²)	2.87
Total (m ²)	252.59
Total (sqs.)	27.19

Width (m)	11.99
Length (m)	16.55

ROOM SIZES	(width x length)
Master Suite	3.96m x 3.49m
Bedroom 2	3.36m x 3.00m
Bedroom 3	3.01m x 3.00m
Bedroom 4	3.01m x 3.00m
Family	3.85m x 6.00m
Dining	3.50m x 4.79m
Living	4.19m x 3.98m
Rumpus	3.02m x 5.82m
Study	3.30m x 2.10m
Garage	5.49m x 6.00m

A SPACIOUS SPLIT LEVEL DESIGN, OFFERING SOMETHING FOR EVERY FAMILY MEMBER.

Step inside the stunning split level Kalara 253 Alt and enjoy everything it has to offer. Upon entry you will find a formal living area, ideal for entertaining, as well as the first of four generous bedrooms. The lower level of the home is where the rest of the sleeping quarters can be found. A stunning parents' paradise is located in the corner, complete with a walk-in-robe and ensuite with his and her basins. This level also houses the laundry, family bathroom and the perfect kids' hangout, the versatile rumpus space. Taking the stairs to the upper level, you will find the oversized entertaining area, featuring a kitchen with island bench and walk-in-pantry, dining and family area, as well as the powder room and study nook. With so many appealing features, it is easy to see why the Kalara 253 Alt could be your dream split level design. It is also available in an alternative design where the main living floor and sleeping quarters have been switched.

(Optional Bellarine facade)



LORNE



THE LORNE IS A DELIGHT WITH PLENTY OF SPACE FOR YOUR GROWING FAMILY.

Named after the Victorian coastal town, the Lorne 297 is a perfect home suitable for your narrow block of land. The classic double storey design utilises the ground floor for everyday living featuring a large kitchen, open-plan family and dining area, alfresco, private living room and study. The first floor features four spacious bedrooms and a kid's zone. The generous master bedroom is the ideal parents' retreat, featuring dual walk-in-rob and an ensuite. Complete with a double garage, the Lorne 297 is both practical and stylish.

(Optional facade)

4 2.5 2

LORNE 297

Ground Floor (m ²)	128.48
First Floor (m ²)	117.98
Garage (m ²)	36.29
Porch (m ²)	2.24
Alfresco (m ²)	12.09
Total (m ²)	297.08
Total (sq.s.)	31.98

Width (m)	10.65
Length (m)	20.50

ROOM SIZES	(width x length)
Master Suite	5.33m x 3.72m
Bedroom 2	3.00m x 2.95m
Bedroom 3	3.44m x 3.00m
Bedroom 4	3.04m x 3.00m
Family	5.04m x 4.35m
Dining	4.56m x 4.26m
Living	3.17m x 4.42m
Rumpus	4.08m x 4.42m
Study	2.95m x 4.22m
Garage	5.50m x 6.00m



LYON



IF YOU'RE DREAMING OF A HOME THAT FEELS LIKE MORE OF A RESORT, MEET THE LYON!

Step inside this entertainer's delight and you will find the first of three living areas. On one side of the Lyon 368 you will find three large bedrooms, a clever study nook and a family bathroom which has been conveniently zoned away from the expansive master suite. The ultimate parents' hideaway is located on the opposite side of the home and features an oversized walk-in-robe and ensuite. The rear of the home features the open-plan kitchen with a walk-in-pantry, plus the family and dining area which leads out to the alfresco. Take the stairs up to the second level and you will find an office and versatile rumpus which could be used as a home theatre. With so many appealing features it's easy to see why the Lyon 368 could be your own resort.

(Optional Atlas facade)

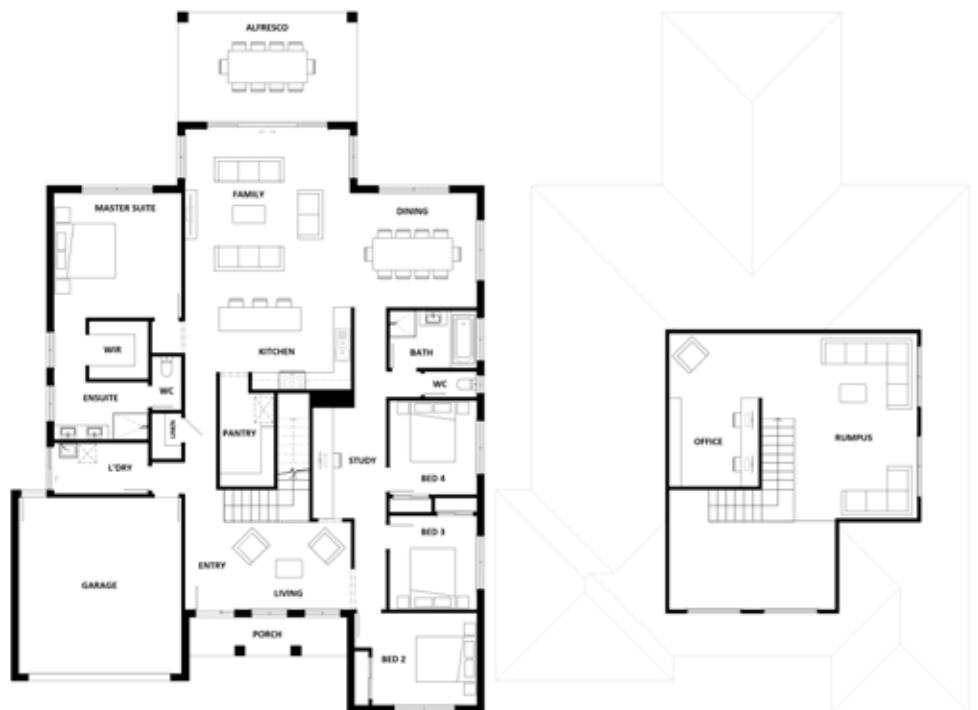
4 2 2

LYON 368

Ground Floor (m ²)	227.20
First Floor (m ²)	74.00
Garage (m ²)	36.88
Porch (m ²)	7.09
Alfresco (m ²)	22.73
Total (m ²)	367.90
Total (sq.s.)	39.60

Width (m) 16.07
Length (m) 23.75

ROOM SIZES	(width x length)
Master Suite	4.35m x 4.26m
Bedroom 2	3.59m x 3.15m
Bedroom 3	3.00m x 3.21m
Bedroom 4	3.00m x 3.21m
Family	5.63m x 6.05m
Dining	4.32m x 3.90m
Living	4.32m x 3.00m
Rumpus	4.16m x 6.30m
Study	2.52m x 3.78m
Office	3.06m x 5.21m
Garage	5.55m x 6.00m



MILA



THE MILA IS BOTH BREATHTAKING AND LIVEABLE.

Step inside the stunning Mila 270 and you will be welcomed into your family's own private sanctuary. This double storey delight features four spacious bedrooms, which wrap around a versatile living area and semi-enclosed study nook, an ideal place for growing children. The master suite contains a generous walk-in-robe and luxurious ensuite with double vanity. Downstairs is where the heart of the home can be found complete with an open-plan kitchen, family and dining area which overlooks a beautiful outdoor alfresco. With so many features packed into one home, the Mila 270 was designed to grow with your family. (Optional Silas facade)

4 2.5 2

MILA 270

Ground Floor (m ²)	92.28
First Floor (m ²)	127.07
Garage (m ²)	36.11
Porch (m ²)	3.15
Alfresco (m ²)	11.28
Total (m ²)	269.89
Total (sq.s.)	29.05

Width (m) 8.51

Length (m) 20.15

ROOM SIZES	(width x length)
Master Suite	4.40m x 3.80m
Bedroom 2	3.00m x 3.00m
Bedroom 3	3.00m x 3.20m
Bedroom 4	2.90m x 3.20m
Family	3.98m x 4.14m
Dining	2.61m x 4.16m
Living	4.69m x 4.63m
Study	1.81m x 2.78m
Garage	5.50m x 6.00m



PROMENADE



HAVE YOUR OWN PRIVATE PARADISE WITH THE PROMENADE.

Live life in the luxurious lane with the Promenade 283. On the lower level you will find a private living room, perfect for entertaining guests, and a well-appointed kitchen that flows through to the dining and family area. Once you've ascended the stairs to the first floor, you will find a rumpus, study, three bedrooms and the star of the home, the master suite. This expansive room spans the entire rear of the Promenade and houses a sizeable walk-in-robe and ensuite, making it the perfect retreat for parents. As spacious as it is stylish, the Promenade 283 will be the place you and your family will want to call home for years to come. This design is also available in an alternate version where the main living areas and sleeping quarters are reversed.

(Optional Moreton facade)

4 2.5 2

PROMENADE 283

Ground Floor (m ²)	122.73
First Floor (m ²)	120.29
Garage (m ²)	36.34
Porch (m ²)	3.46
Total (m ²)	282.82
Total (sq.s.)	30.44

Width (m)	11.87
Length (m)	15.39

ROOM SIZES	(width x length)
Master Suite	4.29m x 3.45m
Bedroom 2	3.00m x 3.00m
Bedroom 3	3.00m x 3.00m
Bedroom 4	3.00m x 3.00m
Family	4.88m x 4.88m
Dining	4.71m x 3.68m
Living	3.60m x 5.00m
Rumpus	3.70m x 4.21m
Study	2.11m x 3.69m
Garage	5.50m x 6.00m



PROMENADE ALT



MAKE THE PROMENADE YOUR VERY OWN HIDEAWAY.



The Promenade 283 Alt makes coming home feel like a holiday with its grand entryway and spacious entertaining areas. Upon entry you will be welcomed into the formal living area, conveniently located near three of four bedrooms. This space also features the laundry, family bathroom and oversized rumpus, the perfect place for children to play. Take the stairs to the second level and you will find the expansive entertaining area which features the kitchen with island bench and walk-in-pantry, dining area and family room, the perfect place to take advantage of your surroundings. This level also houses a clever study nook and parents' paradise, the master suite which features a huge walk-in-robe and ensuite. The Promenade 283 Alt is complete with all of the trimmings you and your family could ever need. It is also available in an alternate version where the main living areas and sleeping quarters are reversed. (Optional Flinders facade)

4 2.5 2

PROMENADE 283 ALT

Ground Floor (m ²)	122.73
First Floor (m ²)	120.29
Garage (m ²)	36.34
Porch (m ²)	3.46
Total (m ²)	282.82
Total (sq.s.)	30.44

Width (m)	11.87
Length (m)	15.39

ROOM SIZES	(width x length)
Master Suite	4.31m x 4.10m
Bedroom 2	3.00m x 3.00m
Bedroom 3	3.00m x 3.00m
Bedroom 4	3.49m x 3.00m
Family	3.70m x 5.67m
Dining	3.08m x 5.17m
Living	3.60m x 4.20m
Rumpus	5.41m x 4.44m
Study	3.70m x 1.99m
Garage	5.50m x 6.00m







Come
home to
your own
sanctuary

Hotondo Homes

1800 677 156

www.hotondo.com.au