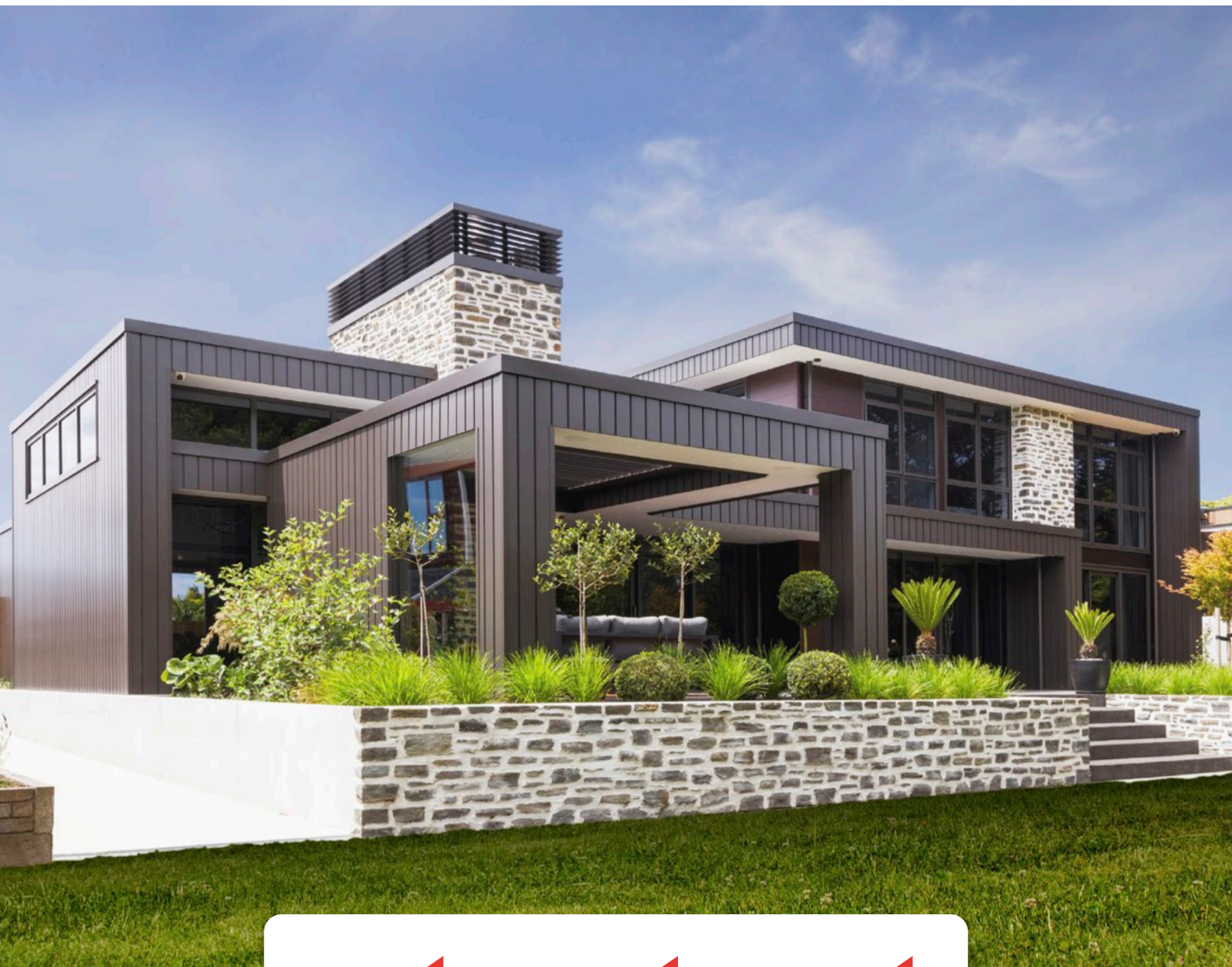




# CLADDING FOR LIFE



## Designers, manufacturers, and installers of unique and innovative powder coated aluminium cladding and mechanical flashing systems.

---

### EXCEPTIONALLY STRONG CLADDING AND TRIM PROFILES WHICH ELIMINATES DISTORTION AND MOVEMENT.

Premium surface coatings including powder coating and woodgrain finishes backed by global powder coating suppliers who provide building owners with 25 year written warranties.

- + Proven to be one of the best tested Watertight cladding systems available in New Zealand.
- + Providing building owners, "The Ultimate in Durability".
- + Extremely low maintenance and ongoing costs throughout the life of the building.
- + Protects your investment and adds capital value to any building.





# Compliance

## BRANZ APPRAISALS



Flashclad's cladding and flashing systems has been AS/NZS 4284 tested to extreme pressures achieving 4.500 kPa.

Our testing result was achieved on a 20mm cavity with no water entering the cavity space, proving to be one of the best tested watertight cladding systems available in New Zealand.

Flashclad's cladding systems when used in conjunction with a fire rated substrate provide a fully non-combustible cladding system meeting NZ Fire Safety standards.

Aluminium fire rated cavity battens and structural battens rated to 4.5 kPa available.

Suitable for all NZBC zones.

Flashclad is installed on baches, holiday homes, houses, multi block apartments, light commercial, retail developments, coastal buildings, schools, reclads, government projects, mid-rise and high-rise buildings.

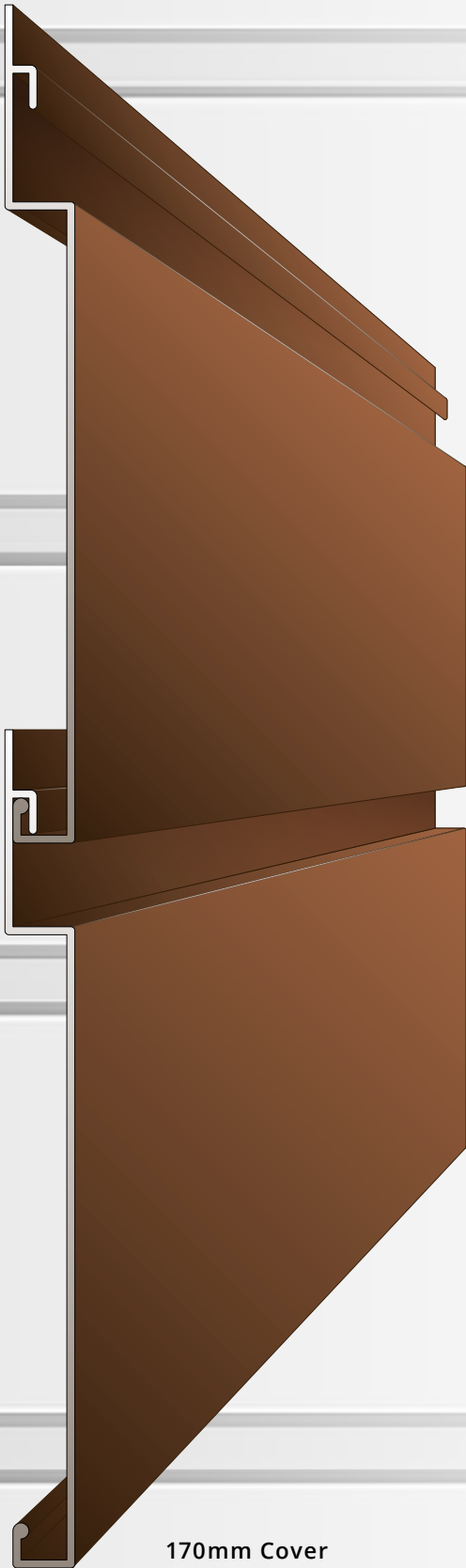


# Bevelbord

- + A traditional weatherboard profile with a unique watertight interlocking system.
- + The base of the board has a level offset which creates clean aesthetic lines at the boards laps.



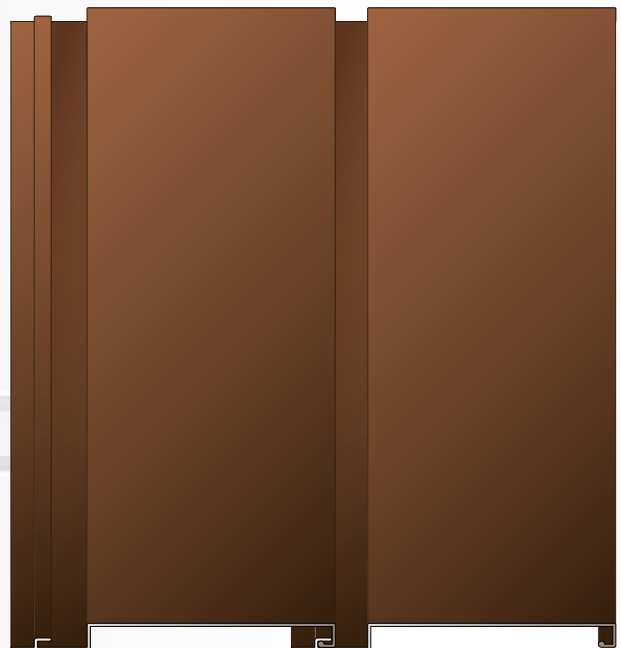
135mm Cover



170mm Cover

# Dualbord

- + Provides the popular aesthetics of a deep 20mm recess.
- + Provides clean straight lines.
- + Water cannot drive in behind the board connections.
- + Recommended for vertical use.



# Euro-line



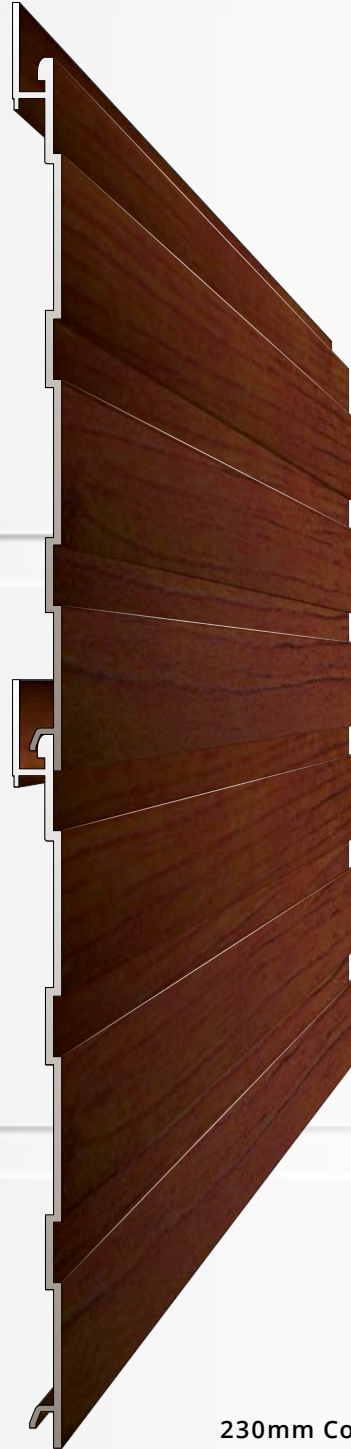
- + An “Exceptionally Strong” profile which provides a flat panel appearance.
- + Incorporating a definitive 2 mm V joint at the boards connections.
- + Easy to clean and maintain.
- + Can also be used for internal feature walls, fascia and soffit linings.



# Euro-lap<sup>210</sup>

# Euro-lap<sup>95</sup>

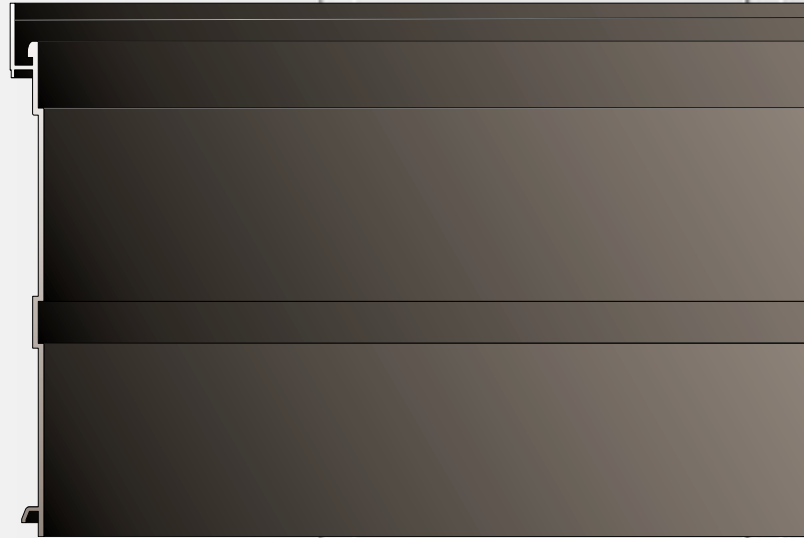
# Euro-lap<sup>65</sup>



230mm Cover

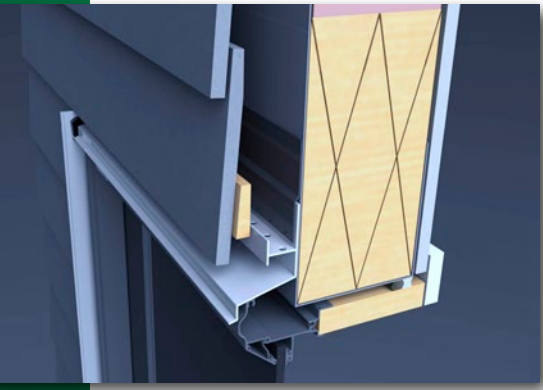


- + Eurolap profiles can be installed horizontally or vertically.
- + Eurolaps definitive negative detail will not trap dirt or hold water.
- + Simply the safest negative detail ever designed.
- + Suitable for mix and matching patterns.
- + Eurolap 95 and 65 mimics the appearance of narrower timber profiles.
- + Compliments wood grain finishes.
- + An excellent alternative to re-oiling timber profiles every 2-3 years.

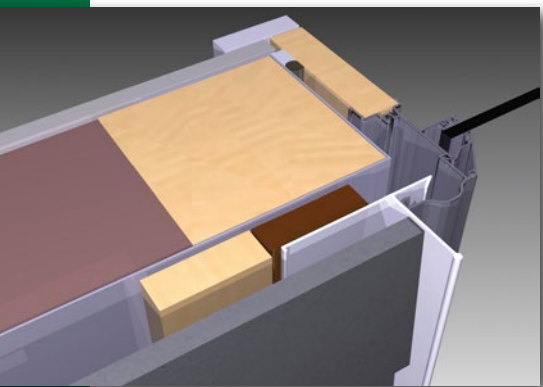


**Euro-lap 95, 210 & 65 Mixed**

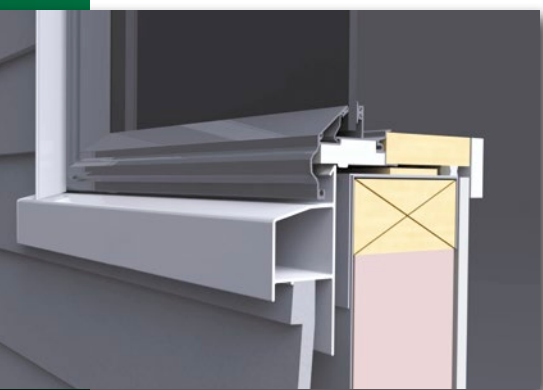
## Flashclad's Mechanical Flashing System.



- + Extruded aluminium head flashing with a combined cavity closure.
- + Machined aluminium stop ends butting up against the jamb.
- + Preventing leaks that occur when conventional head flashings are slotted into the cladding.



- + Revolutionary extruded aluminium Jamb providing back up in the event of water penetrating behind the cladding or joinery frame, managing any water directly on to the sill below.
- + Replaces risky sealant seals that masquerade as flashings.
- + Creates a recessed look to all joinery.



- + The Flashman extruded aluminium sill diverts all the dirt wash and rain water from above protecting the cladding below at the critical joinery base junction.
- + Our strong sill design incorporates full joinery support eliminating the need for Wanz bars.
- + Flashman's Flashing system has been AS/NZS 4284 tested in conjunction with Flashclad's cladding systems achieving 4.500 kPa = 312 kph wind speeds.

**THE FLASHMAN SYSTEM PROVIDES SILLS AND JAMBS IN A RANGE OF SIZES TO ACCOMMODATE DIFFERENT CLADDING THICKNESSES AND IS SUITABLE FOR MOST CLADDING TYPES. IE: WEATHERBOARD, PLYWOOD, MONOLITHIC AND SOLID PLASTER.**

**NO RELIANCE ON TEMPORARY SEALANTS, COMPRESSED FOAMS OR PLASTIC BACK FLASHINGS.**

## Aluminium

Has been used globally in the manufacture of planes, aerospace, ships, boats, cars and the building industry for the past 150 years.

- + Is one of the most durable metals on our planet and is 100% recyclable.
- + It's hard surface is corrosion resistant and will not absorb water, rot, cup or split.
- + Flashclad's aluminium cladding will provide a minimum serviceable life of 50 years and will outlast most other cladding types by decades.

## Powder Coating

Powder coating is one of the most durable colour coatings available and will provide building owners with decades of excellent service.

## Metwood Woodgrain Finishes

Providing the strength and durability of aluminium with the appeal and aesthetics of natural wood

- + Coatings are stain, fade, impact, scratch and fire resistant.
- + Metwood eliminates the ongoing expensive maintenance costs of re-scaffolding, re-oiling, or re-staining timber profiles every 2-3 years.
- + Over 100 wood grain and special effects colours to choose from.

**FLASHCLAD'S PREFINISHED CLADDING REDUCES CONSTRUCTION TIME FRAMES AND SCAFFOLD HIRE COSTS.**

**ALL FLASHCLAD COATINGS ARE BACKED BY GLOBAL POWDER COATING SUPPLIERS WHO PROVIDE BUILDING OWNERS WITH 25 YEAR WRITTEN WARRANTIES.**



## Flashclad has a nationwide distributor network that markets and installs in their regions.

Our distributors are licenced building practitioners and business owners who also have extensive knowledge in building design and weathertightness.

Most distributors have their own building companies, many of which are highly awarded for their work on prestigious and complicated building projects.



**CONTACT FLASHCLAD NZ  
HEAD OFFICE OR YOUR LOCAL  
DISTRIBUTOR ON**

**0800 55 66 00**

**ENQUIRIES**  
info@flashclad.co.nz

**TECHNICAL ENQUIRES**  
steve@flashclad.co.nz  
or gerry@flashclad.co.nz

### **SOCIAL**

 facebook.com/flashclad

 instagram.com/flashcladnz

Featured on  
**ArchiPro.**

<https://archipro.co.nz/professional/flashclad>



Proudly manufactured and powder coated in NZ by