

To ensure peace of mind when choosing a roof restoration company to restore your roof, JMZ answers all your questions...

How long has the company been in business?

JMZ Roof Restorations is a family owned company established in Brisbane in 1992. We have a dedicated team of roof tilers, painters and customer service consultants who work hard to ensure we are continually delivering excellence in customer service and satisfaction.

Our showroom is open Monday to Friday 8.00am to 4:00pm. For more information, call us on 1300 760 076 or visit us at www.jmz.au.

Why a roof restoration over just repairs?

JMZ will always recommend a full roof restoration over repairs to ensure long term security over your home. Repairs are a simple fix to an immediate problem, but a restoration involves a system that has been proven to protect the roof surface for many years to come.

We only use and recommend Globalcote Roof Coatings which are manufactured in Australia and certified as waterproof roof membranes. For more information on the Globalcote range of products, visit www.globalcote.com.au.

Does the company hold the appropriate licences and insurances?

We are licensed with the Queensland Building and Construction Commission and hold both Roof Tiling and Painting & Decorating licences. We are also proud to be a member with trade organisations such as Master Builders Association, Master Painters' Association, and the Housing Industry Association.

JMZ is covered by comprehensive Public Liability Insurance and WorkCover insures all our employees.

I need help choosing a roof colour?

Globalcote Roof Coatings are available in a large range of colours including the Colorbond® colour range. If you need our assistance, we are more than happy to share our knowledge and experience.

JMZ can also provide a list of homes restored in your suburb so you are able to see how colours look on a larger scale.

How long does a roof restoration generally take?

JMZ generally takes 2 working days to carry out your roof restoration. Where bad weather prevails, the process may vary but you will be informed each step of the way.

Where possible, we prefer you or a representative to be at home during the process.

Does the company provide a warranty on their workmanship?

Yes, we provide a 10 year warranty for all full roof restorations.



Come and visit our showroom today!



Our friendly staff can answer all your questions, show you before and after samples and organise an obligation free quote for you.

Call us today on **1300 760 076**
or visit us at www.jmz.au

Phone (07) 3821 8686

Email info@jmz.au

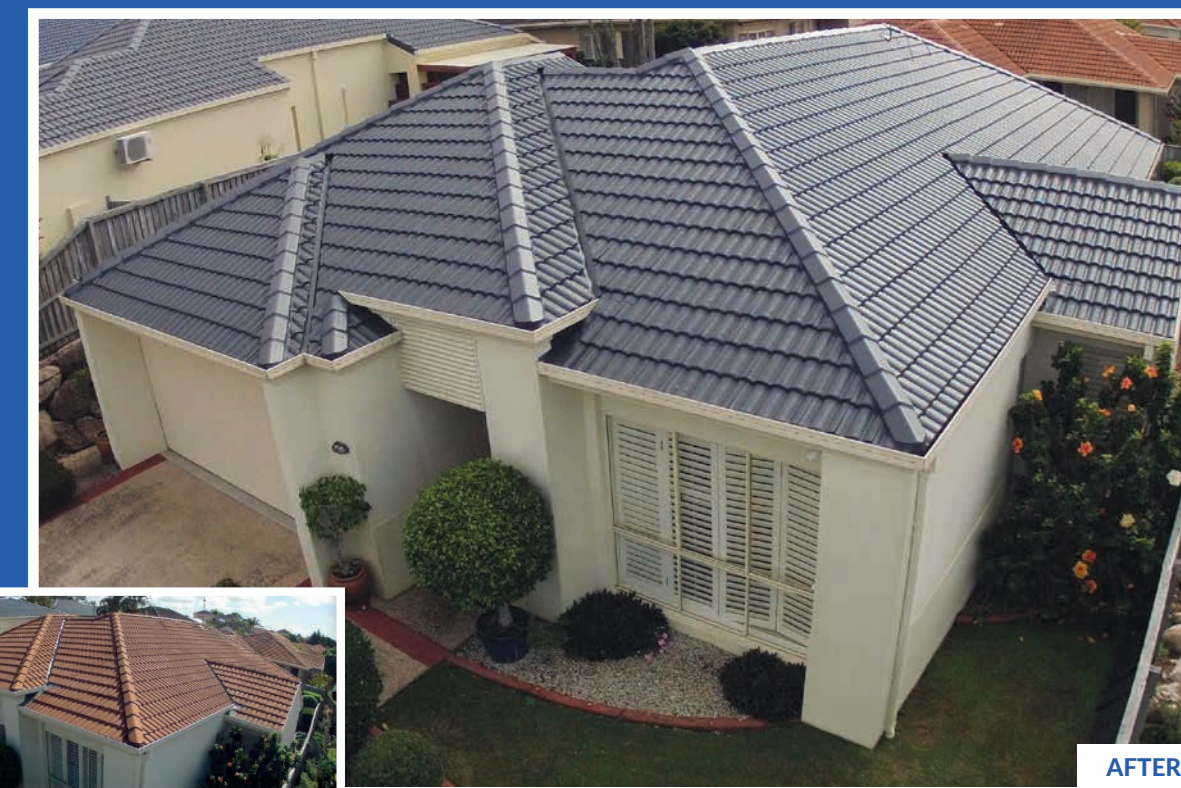
QBCC Licence No: 79306

www.jmz.au



EST.1992

PROTECT YOUR TILE OR METAL ROOF WITH A QUALITY ROOF RESTORATION BY JMZ



BEFORE

AFTER

JMZ adds value and protects!

JMZ Roof Restorations is a family owned company established in Brisbane, Queensland in 1992. JMZ proudly remains in operation under the original business owners.

Initially working from the family home with one truck, JMZ doubled in size over a period of 7 years and in 1999 relocated to a small showroom in Capalaba. Today, JMZ is a successful company, highly regarded among our valued customers and affiliated business associates.

JMZ performs roof restorations to the residential, commercial, industrial and Government sectors throughout Brisbane and surrounding suburbs including regions of the Gold and Sunshine Coasts.

JMZ have a dedicated team of qualified roof tilers, painters and customer service consultants who work hard to ensure we are continually delivering excellence in customer service and satisfaction.

We are fully accredited with the Queensland Building & Construction Commission (QBCC) for both roof tiling and painting & decorating. We are members of Master Builders, Master Painters and Housing Industry Associations.

At JMZ we understand the importance of quality and value for money.

A roof restoration to a tile, terracotta, or metal (inc Colorbond®) surface is an investment with both short and long-term financial benefits. Whether the job is a family home, investment property, corporate or commercial building, a good job improves a building's appearance and perceived value.

The real value becomes apparent in the long-term. The quality of the job will have a direct and substantial effect on the life and maintenance of the property.

JMZ Roof Restorations use and only recommend Globalcote Coatings. They don't just look good, they play a vital role in protecting your building's surfaces from the ravages of the environment (sun, wind, rain, pollution, etc).

If you are looking for a highly professional, quality roof restoration, please feel free to give us a call.

We honestly believe you won't be disappointed when choosing JMZ and we look forward to being of service to you.



AFTER



AFTER



BEFORE



BEFORE

PROCESS OF A TILE ROOF RESTORATION

DAY ONE

SITE PREPARATION

- Redirection of water away from council storm water drains
- Water tanks disconnected/diverted

ROOF REPAIRS

- Broken, chipped or cracked roof tiles replaced
- Valley clips installed (if required)
- Valley seal installed (if required)

ROOF CLEANING

- Roof surface pressure cleaned using min 3000psi to remove all excess dirt, grime, lichen and other contaminants

RE-BED AND REPOINT

- Ridge caps re-bedded as required
- Ridge caps repointed as required using Globalcote Flexible Pointing
- Weepholes drilled

DAY TWO

APPLICATION OF SEALER

- Solar panels/solar hot water masked
- Globalcote roof sealer is applied to entire roof surface to ensure maximum adhesion of Globalcote Roof Membrane Coating

APPLICATION - PROTECTIVE COATING

- 1st coat Globalcote Roof Membrane applied
- 2nd coat Globalcote Roof Membrane applied
- Globalcote Roof Membrane available in Elastacote High Gloss or Infracote Heat Reflective Coatings
- Large range of colours available

ALL OF OUR ROOF RESTORATIONS ARE BACKED BY A 10 YEAR WARRANTY



PROCESS OF A METAL ROOF RESTORATION

DAY ONE

SITE PREPARATION

- Redirection of water away from council storm water drains
- Water tanks disconnected/diverted

ROOF CLEANING

- Roof surface pressure cleaned using min 3000psi to remove all excess dirt, grime, lichen and other contaminants

RUST TREATMENT

- Solar panels/solar hot water masked
- Rusty screws treated with epoxy rust primer
- Rusty screws checked and replaced if required
- Rust converter applied to treat rust affected areas of roof

DAY TWO

APPLICATION OF SEALER

- Solar panels/solar hot water masked
- Globalcote roof sealer is applied to entire roof surface to ensure maximum adhesion of Globalcote Roof Membrane Coating

APPLICATION - PROTECTIVE COATING

- 1st coat Globalcote Roof Membrane applied
- 2nd coat Globalcote Roof Membrane applied
- Globalcote Roof Membrane available in Elastacote High Gloss or Infracote Heat Reflective Coatings
- Large range of colours available



JMZ ONLY USE AND RECOMMENDS GLOBALCOTE COATINGS



The **Globalcote** range is 100% acrylic, low VOC, environmentally friendly, waterproof, dirt repellent, tough, durable and highly flexible, allowing it to withstand elements of weathering.

The **Globalcote** waterproof membrane range is made up of **Elastacote**, the standard coating and **Infracote**, the infrared reflective coating. Our standard roof restoration quote includes **Elastacote**. Additional charges apply for the application of **Infracote** products.

Both **Infracote** and **Elastacote** meet Australian Standards AS4858 and AS4654 and are certified as Class 2 membranes.

Infracote uses technology to reflect the sun's radiation away from the roof surface.

It works by targeting the invisible infrared portion of the sun's radiation which means coated surfaces stay cooler and the coating will last longer.



ELASTACOTE

- Waterproof Coating suitable for roofs and walls
- 100% Acrylic
- Resists fungi and algae growth
- Available in a wide range of colours
- Available in High Gloss or Satin



INFRACOTE

- Infrared Heat Reflective Waterproof Coating suitable for roofs
- Available in a wide range of colours
- Available in High Gloss or Satin

www.globalcote.au