



AXCELLENT

Foshan Axcellent Industry Co.,Ltd

Made for better living



Kitchen

Wadrobe

Vantiy

Shutter

Interior door



One-Stop Solution

佛山市利美家居实业有限公司

Foshan Axcellent Industry Co, LTD

1. 作为一家综合家居建材品牌运营商，佛山市利美家居实业有限公司自成立以来一直专业认真踏实做事，始终追求以良好的用户体验赢得用户的认可，产品先后进入澳洲，欧洲、北美、南美，东南亚等超过70个国家和地区市场，为全球客户提供家居建材一站式解决方案，总体客户评价在各销售渠道排名前列，公司已经成为欧美市场备受欢迎的互联网家居品牌之一。

2. 利美家居实业整合实现了研发、设计、生产、销售、现代物流、售后服务等纵深产业链一体化，主营产品涵盖主要家居建材多个大类产品，如全屋定制，酒店/餐厅工程家具定制，户外家具，门窗，五金，卫浴，地板，瓷砖等，同时随着跨境电商事业部运营的逐渐成熟，利美家居实现了线上线下销售体系的融合。公司旗下拥有凌泰LINKOK、澳思耐AUSNAT，私家花园PRIVATE GARDEN等多个家居品牌。

3. 利美家居将一直坚持以客户为导向，打造全球互联网家居建材领导品牌，通过持续自主研发和设计创新，不断满足客户在装修建材居家生活方面的多样化需求，坚持“让人们住得更好”的企业使命，力争成为中国品牌出海的优秀企业。

1. As a comprehensive brand operator of home building materials, Foshan Axcellent Home Industry Co., Ltd. has been working professionally and conscientiously since its establishment, and has always pursued to win the recognition of users with good user experience. Its products have entered Australia, Europe, North America, and South America, Southeast Asia and more than 70 countries and regions, providing global customers with one-stop solutions for home building materials. The overall customer evaluation ranks in the forefront of various sales channels. The company has become one of the most popular Internet home furnishing brands in the European and American markets.

2. Axcellent Home Industry has realized the integration of deep industrial chains such as R&D, design, production, sales, modern logistics, and after-sales service. The main products cover multiple major categories of main home building materials, such as whole house customization, hotels/restaurants Engineering furniture customization, outdoor furniture, doors and windows, hardware, bathroom, flooring, ceramic tiles, etc. At the same time, with the gradual maturity of the operation of the cross-border e-commerce business department, Axcellent Home has realized the integration of online and offline sales systems. The company owns many home furnishing brands such as LINKOK, AUSNAT, PRIVATE GARDEN and so on.

3. Axcellent Home will always adhere to the customer-oriented orientation, build a leading brand of global Internet home building materials, and continuously meet the diverse needs of customers in the home life of building materials through continuous independent research and development and design innovation. Axcellent adheres to the corporate mission of "Made for Better living", and strives to become an excellent Chinese enterprise Which is going abroad.



HOW TO START WITH US?



4 steps help you

1. Get inspired. Browse through our catalogue or website to choose kitchen style you want. We have huge range of cabinet finishes, as well as a comprehensive range of benchtop colours and options to design the kitchen of your dreams.
2. Measure your room. Offering us your floor plan or draw a draft layout of your kitchen. Be sure to include any doors, electrical and gas points and fixed features in the room such as windows which may affect the layout.
3. Start planning. Tell us final kitchen design you want and what home appliance and functional baskets you want to put in the kitchen. Or you can let us know your budget.
4. Get Quotation. We will quote estimate prices to you first according to your requirement. If prices are acceptable, you can come to visit us to confirm more detail or contact our sales person to arrange CAD or 3D for final confirmation.

CONTENTS

LACQUER SERIES	6-21
MELAMINE SERIES	22-33
VENEER SERIES	34-37
PVC SERIES	38-41
SOLID WOOD SERIES	42-45
ACRYLIC SERIES	46-53

Wardrobe

SWING DOOR WARDROBE	56-59
WALK-IN CLOSET	60-63
SLIDING DOOR WARDROBE	64-67

Bathroom Vanity

Interior door

Shutter

Door Panel

Counter-top

Accessories

Kitchen Cabinet Accessories

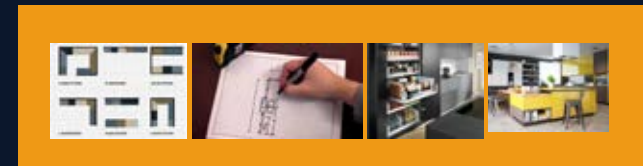
BASKET ACCESSORIES

SINK

FAUCET

Wardrobe Accessories

Project Reference





Lacquer series









Mdf lacquer in high gloss

Raw materials: MDF lacquer in high gloss
Accessory:BLUM/DTC/Others
Countertop:Quartz

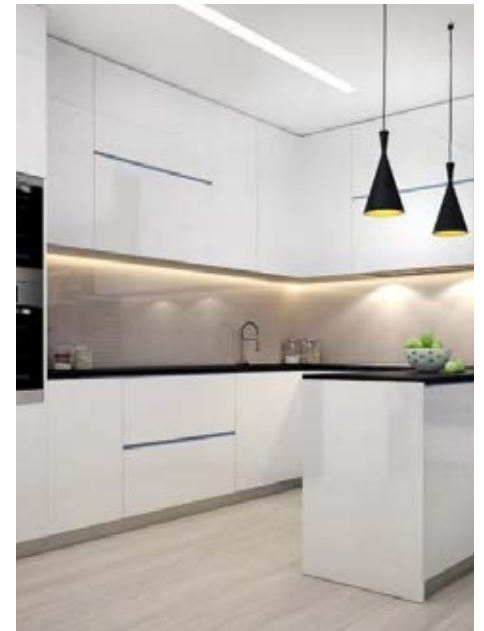
This modern white simple and sleek kitchen design adds a bold look with its full quartz island. The look is picked up in the backsplash and works well with the white cabinets. The contrast of the dark wood floors adds interest.





Raw materials: MDF lacquer in high gloss
Accessory:BLUM/DTC/Others
Countertop:Quartz

Simple standard handle or no handle design with colorful quartz can achieve new ideas. White always with many choices.







MDF LACQUER IN HIGH GLOSS

Raw materials: MDF lacquer in high gloss

Accessory:BLUM/DTC/Others

Countertop:Quartz



Calacatta Marble in Carrara, pure Italian origin, cathedrals, churches, castles, as the most sought-after materials in the stone universe. Now, in Linear kitchen, with more than 10 quartz colors, its bold veining with a clear, white background is the essence of the highlight details in kitchens.





Mdf lacquer in high gloss

Raw materials: MDF lacquer in high gloss
Accessory: BLUM/DTC/Others
Countertop: Quartz

Varies aluminium conceal handles types
bring different design and feeling in kitchen
area, With modern new technology we will
enjoy more in kitchens.









**Mdf lacquer
in high gloss**









Melamine series





PARTICLE BOARD MELAMINE

Raw materials: Particle board with melamine finish

Color director : Vertical

Accessory:BLUM/DTC/Others

Countertop:Quartz

Colors and lines as primary aesthetic choice the classic kitchen design solutions complete freedom of composition and style. Practical and versatile in Vast range of different forms,design and finishes









WHAT YOU SEE IS ART in CABINET DESIGN



The surfaces of the kitchenette as well as the space-in-space construction are made of Bergamo elm. The dark one Wood of the noble deciduous tree gives the Furniture a natural value and gives heat the room. In the minimalist designed living space comes this Detail particularly well.

L-shaped kitchens are a great proponent of the working triangle. With work stations set out on two different walls in L-shaped kitchens, you don't have to walk too far to reach different zones, making meal prep more organised!







PARTICLE BOARD MELAMINE MIX LACQUER

Raw materials: particle board with melamine finish
Color
Direction: Horizontal
Accessory:BLUM/DTC/Others
Countertop:Quartz

This modern white simple and sleek kitchen design adds a bold look with its full quartz island. The look is picked up in the backsplash and works well with the white cabinets. The contrast of the dark wood floors adds interest











Particle board Melamine with special door shape



Veneer Series



RUSTIC COLOR in WARM COLOR FOR HOME FEELING



The Surfaces of the kitchen run as well as the room in room constructions are made of melamine materials, The wood grain color lends the furniture a natural quality and gives the room warmth, This is particularly effective in the minimalistically furnished kitchen area







PVC series



**Modern style
in
Simple tradition aspect**



Raw materials:MDF PVC
Accessory:BLUM/DTC/Others
Countertop:Quartz
As an cheaper choice compare with Solid woodmaterials..the easy care and low maintenance. MDF PVC always be a better choice somepeople, with various door panel shape andcolors,even similar as lacquer productionprocess like lines which easily showsin the door panel, The traditional taste alwaysbrings back to the good ages,together withsome new clear simple design,we can achieeva strong modern feeling in your lovely home





MDF PVC

Raw materials: MDF PVC

Accessory: BLUM/DTC/Others

Countertop: Quartz

Thermofoil cabinets are made using a flexible vinyl material that is applied by heating the vinyl and molding it over medium-density fiberboard (MDF) or engineered wood.

The result is a cabinet door with a smooth surface that resists chipping better than painted surfaces. Whether or not thermofoil cabinets are right for your home depends on your needs, because while they have several appealing features





Solid wood series





Solid wood

carcass: plywood/particle board with melamine
Accessory:BLUM/DTC/Others
Countertop:Quartz

Enhance your kitchen with the clean, simple lines of the Shaker Collection. The Shaker Collection is so versatile that it will add style to all homes from traditional to modern.

Inspired by French country style, the kitchen in simple white has been a stylish update on a tight budget. The white color wall becoming a part of the kitchen Farrow & Ball's Light stainless finish and door handles,Oven, Cooker, Chairs, now this is not just a classic kitchen, But the most classic kitchen





Solid wood

carcass: plywood/particle board with melamine

Accessory:BLUM/DTC/Others

Countertop:Quartz

Enhance your kitchen with the clean, simple lines of the Shaker Collection. The Shaker Collection is so versatile that it will add style to all homes from traditional to modern.

Inspired by French country style, the kitchen in simple white has been a stylish update on a tight budget. The white color wall becoming a part of the kitchen Farrow & Ball's Light stainless finish and door handles,Oven, Cooker, Chairs, now this is not just a classic kitchen, But the most classic kitchen







**Board
Acrylic
Glass
PET series**





ACRYLIC

Raw materials: Acrylic in high gloss
 carcass: plywood/particle/MDF board with melamine finish
 Accessory: BLUM/DTC/Others
 Countertop: Quartz

CHINESE HIGH PRESSURE

Raw materials: Chinese high pressure laminate
 carcass: plywood/particle/MDF board with melamine finish
 Accessory: BLUM/DTC/Others
 Countertop: Quartz



Raw materials: glass door panel with alu frame
carcass: plywood/particle board with melaine finish
Accessory:BLUM/DTC/Others
Countertop:Quartz

The classic approach to high gloss is to simultaneously apply paint and a high gloss lacquer to wood or mdf. This is best when it is professionally applied to ensure a uniform sheen. Lacquer is a good material for high-gloss finishes because it's easy to work with and can be sanded flat and polished to a high gloss. The problem with high-gloss finishes is that with crisp reflections surface defects are very obvious. The finishing process is highly labor intensive which can makes it more expensive than other options.

Other options for high gloss cabinets are thermofoil, acrylic, laminate and UV panels. This relatively new material is increasing in popularity due to its contemporary look and durability. These options waterproof, will not warp or yellow in the sun.

Traditional laminates, both HPL and TFM, offer high gloss finishes. There are several ways that this is achieved, including specialty overlays and technologies that impart textures (including press plates, release papers and belts). Technical Hot Coating is another method that is beginning to make its way into the North American laminates market. For this process PUR is heated and applied in an even coat directly over melamine. In all cases the panel is sealed. Laminates are typically scratch and water resistant, characteristics that are increased with hot Coating.











PET BOARD

Raw materials: UV board
carcass: plywood/particle board with melamine finish
Accessory: BLUM/DTC/Others
Countertop: Quartz

High gloss finishes entered the realm of kitchen cabinetry several years ago via the top European design houses. Since then the popularity of the high gloss design has increased, and high-gloss finish is becoming more prominent in everything from kitchens and baths, to closets and furniture. At every level, high gloss has proven a very popular finish that will likely continue to thrive.



Wardrobe



What You Need to Know about Walk-in Wardrobes

What is A Walk-in Wardrobe?

Unlike a common wardrobe, a walk-in wardrobe has a separate space with ample storage. Because there are usually also dressing tables, mirrors, seats and other facilities in the walk-in wardrobe, which is much easier to use.

The Advantages of A Walk-in Wardrobe

1. More clothes can be stored.

Generally, compared to a common wardrobe, the space in a walk-in wardrobe is larger, and there is more space to store clothes. For a walk-in wardrobe, we just need to leave an aisle in the middle and the space on both sides can be made into storage wardrobes.

2. More functions.

In addition to more storage space, there will be chairs, dressing table, ironing board etc. in a walk-in wardrobe. This will make the walk-in wardrobe more functional and it's more convenient when we use it.

3. Easy to transform.

The traditional wardrobe can easily be transformed into a walk-in wardrobe, or even add a dressing room.

4. A more natural integration into the bedroom lighting environment.

The walk-in wardrobe should also be reasonably arranged in terms of lighting and shades, so that it can be perfectly integrated into the overall style of the room. In terms of lighting design, it is best to use fluorescent lamps and other light sources close to natural light, so that the color of the clothes is close to normal.

5. Promote the overall design effect.

Each area, such as formal wear, casual wear and lounge wear area can be clearly distinguished. This allows the size of each section to be set precisely. And such rational planning can make the overall room decoration more regular and organized.

6. More reasonable classification.

Walk-in wardrobe has sufficient storage function, then we can store the clothes according to the different types of clothing, or different seasons, so that we can find the clothes we want fast and conveniently.



Made for better living



Swing door Wardrobe







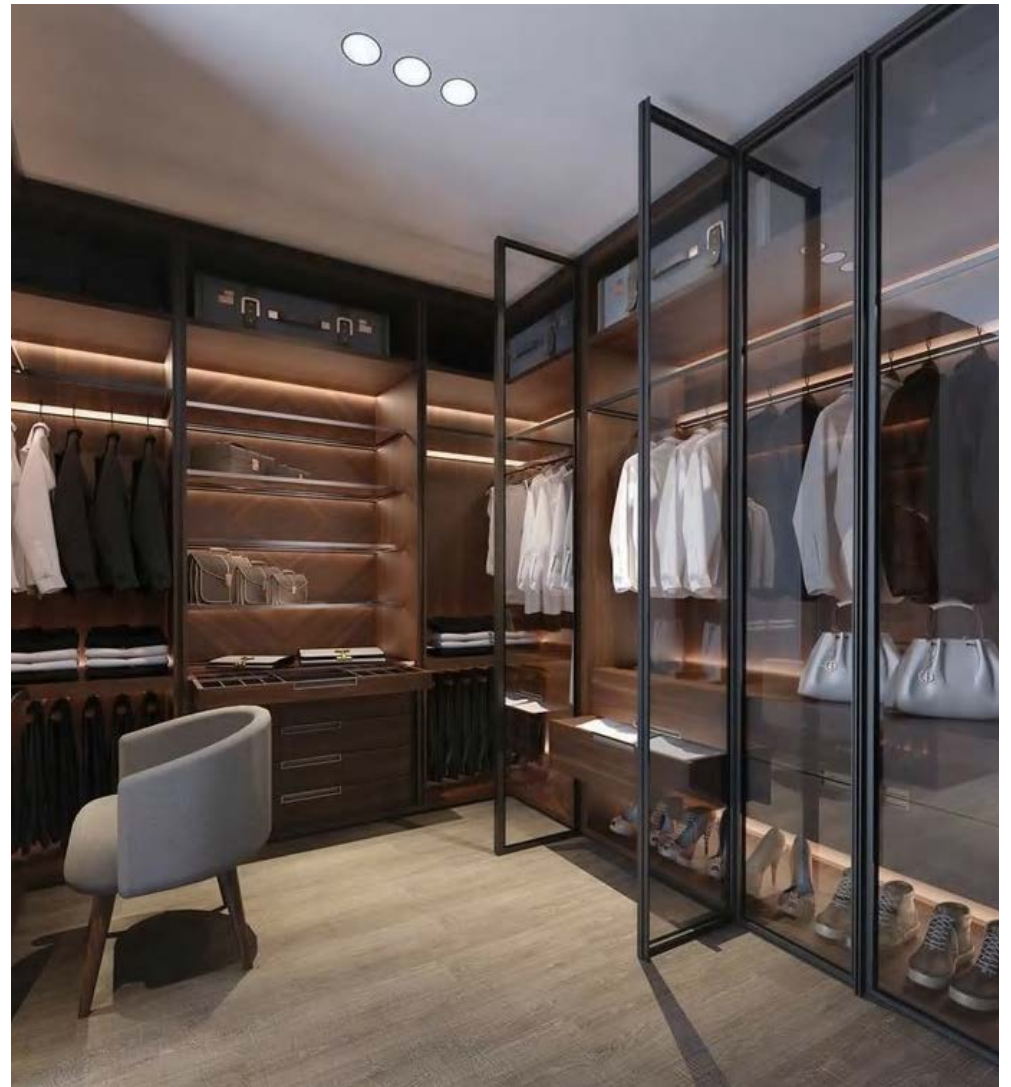




Walk-in Closet







Door panel: Glass with aluminum frame
Carcass: Particle board with melamine
Accessories: Blum/DTC, Chinese top brand basket etc



INSERTED SLIDING DOOR WARDROBE

Sliding doors are the preferred choice where space is at a premium. Some people prefer sliding doors, as it means no floor space is occupied when wardrobe doors are open. For people who only use part of their wardrobe on a regular basis, sliding doors are the ideal option.

[Click to launch wardrobe designer](#)

Sliding doors are available in several material options as well as a variety of colours





TEMPERED GLASS DOOR PANEL INSERTED SLIDING DOOR





Bathroom Vanity



The brand concept of "comfort for life" attaches the importance to the comfortable relationship between product creation and humanization of product design.

The brand concept of "comfort for life" attaches the importance to the comfortable relationship between product creation and humanization of product design.



FOR DESIGN FOR ENJOYMENT FOR LIFE

Design is the trade-off between the search for a simple and abstractness, moving from first gentle and wild, light and shadow beyond the search for the origin and return of human nature. At this time, we use lines and blocks, with long and straight, dense and sparse, close and relaxed, regression of intimacy. Clarity, difficult or a better and all these are manifested in our outdoor space.



Interior doors



B-5-03



B-5-04



B-5-22



B-5-23



B-5-01



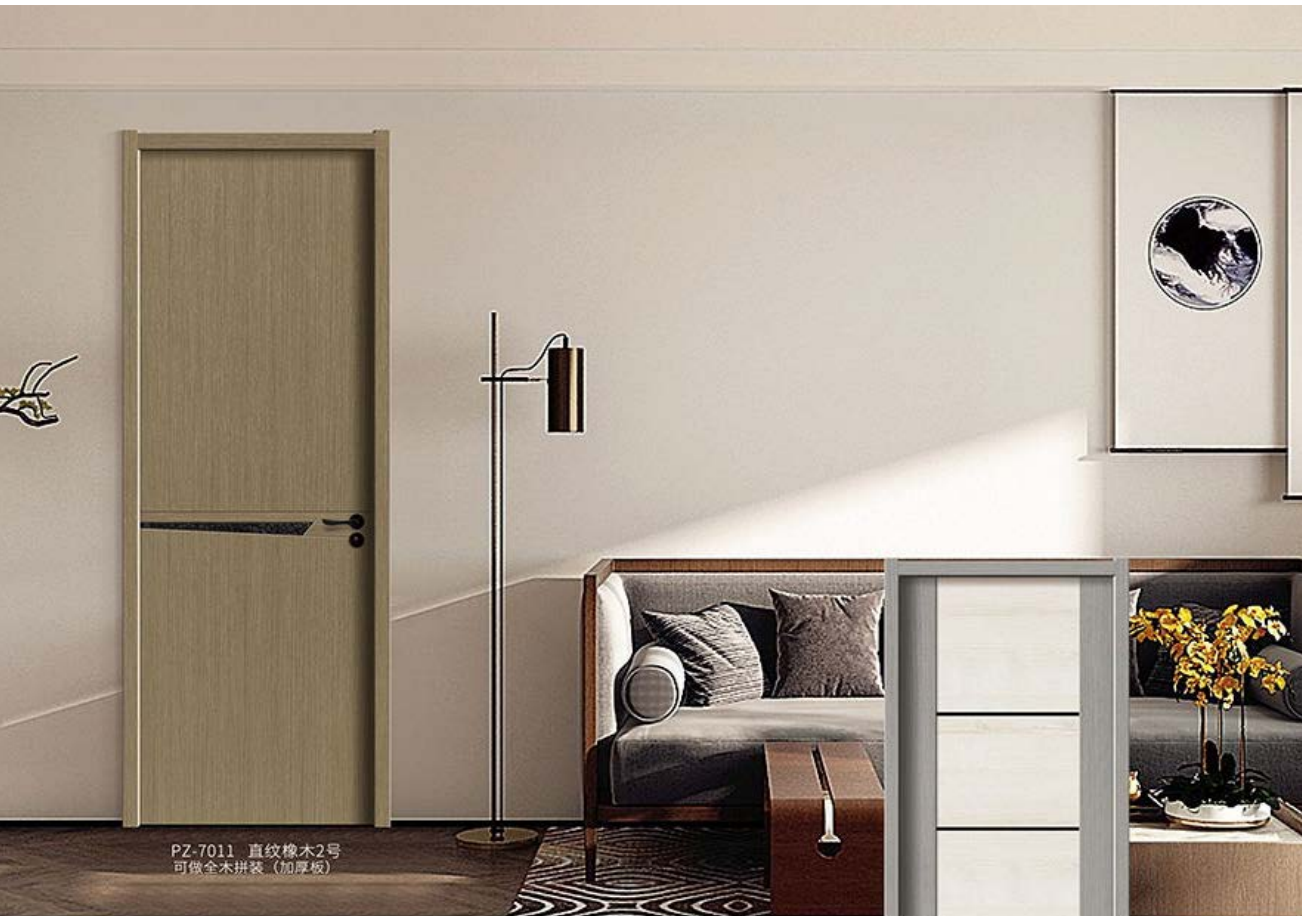
B-5-02



B-5-03



B-5-04



PZ-7011 直纹橡木2号
可做全木拼装 (加厚板)



PZ-7022



PZ-7013



PZ-7016



PZ-7017



PZ-7019



PZ-7020



PZ-7021



J501

J505

J507

QX02

QX05

QX06



NK-001

NK-002

NK-003

NK-004

NK-005





BN-306



BN-307



BN-308



BN-309



BN-310



BN-311



BN-312



BN-313



BN-301



BN-302



BN-303



BN-304



BN-314



BN-315



BN-316



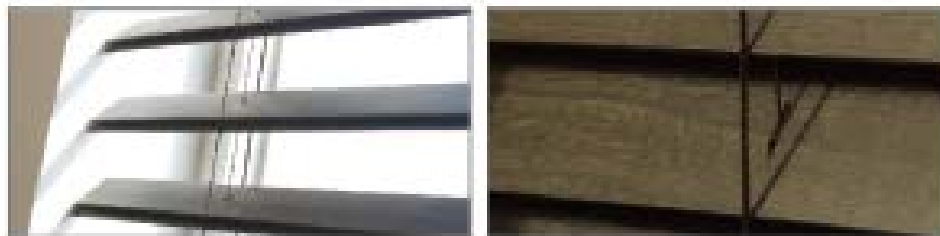
BN-317



Shutter



Multi View X2





Open means

开启方式



Standard lacquer color series



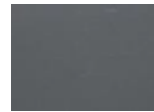
AXL-H17-001



AXL-H17-002



AXL-H17-003



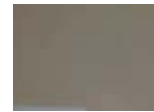
AXL-H17-004



AXL-H17-005



AXL-H17-013



AXL-H17-011



AXL-H17-012



AXL-H17-006



AXL-H17-007



AXL-H17-008



AXL-H17-009



AXL-H17-010

Silver flashing lacquer color series



AXL-H17-014



AXL-H17-015



AXL-H17-016



AXL-H17-017



AXL-H17-018



AXL-H17-032



AXL-H17-029



AXL-H17-025



AXL-H17-019



AXL-H17-020



AXL-H17-021



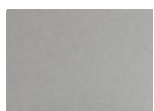
AXL-H17-022



AXL-H17-023



AXL-H17-031



AXL-H17-024



AXL-H17-030



AXL-H17-026



AXL-H17-027



AXL-H17-028

Melamine color series

							
AXM-YDH1002	AXM-YDH1004	AXM-YDH103	AXM-YDH134	AXM-YDH204	AXM-SD6111-S2	AXM-SD6112	AXM-6081-S
							
AXM-YDH241	AXM-YDH255	AXM-YDH257	AXM-YDH260	AXM-YDH265	AXM-SD6097-FN7	AXM-SD6098-FN7	AXM-SD6087-FN7
							
AXM-YDH270	AXM-YDH072	AXM-YDH276	AXM-YDH292	AXM-YDH305	AXM-SD6092	AXM-SD6086-FN7	
							
AXM-SD6008	AXM-SD6075	AXM-SD6062	AXM-SD6066	AXM-SD6077-S	AXM-SD6082-S	AXM-SD6083-S	

PVC Color Series



AXP-S-0012-1G



AXP-S-0026-1Q



AXP-S-0046-3D



AXP-S-T0601-1B



AXP-S-2451-1J



AXP-S-L0205-0A



AXP-S-40092-1A



AXP-S-40067-10T



AXP-S-40034-2MM

Wood Veneer Color Series



AXV- 橡木 18S



AXV- 菱纹木 106



AXV- 锦纹木 107



AXV- 黑杏 202



AXV- 酸枝 201



AXV- 黑檀 075



AXV- 黑胡桃 315



AXV- 黑胡桃 202



AXV- 黑胡桃 108



AXV- 黑胡桃 055



AXV- 斑马 209



AXV- 斑马 216

Acrylic Color Series



AXA-ZS-Y660 7



AXA-ZS-Y661 6



AXA-ZS-Y681 2



AXA-ZS-Y681 5



AXA-ZS-Y683 2



AXA-ZS-Y662 4



AXA-ZS-Y698 2



AXA-ZS-F760 1



AXA-ZS-F-760



AXA-ZS-Y690 8



AXA-ZS-Y692 7

Glass Color Series



AXG- 龙凤黑檀



AXG- 乌金木



AXG- 醉意斑马



AXG- 超白



AXG-K 金木纹

Note: All the color differences can not be avoid,referto real sample to confirm order

Counter top color series

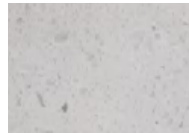
Quartz



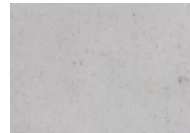
AXQS-K1008



AXQS-K1010



AXQS-K1067



AXQS-K6022



AXQS-K5002



AXQS-T03



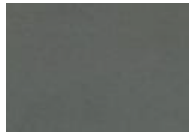
AXQS-T04



AXQS-black



AXQS-white



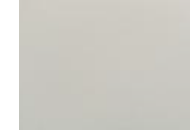
AXQS-grey



AXQS-carrara



AXQS-T02



AXQS-DK7615000



AXQS-DK7615001



AXQS-DK7615006



AXQS-DK7615007



AXQS-DK7615008



AXQS-DK7615009



AXQS-DK7615010



AXQS-DK7615002



AXQS-DK7615003

HPL



AXHPLC-30023



AXHPLC-6309



AXHPLC-63007



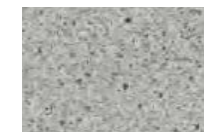
AXHPLC-60005



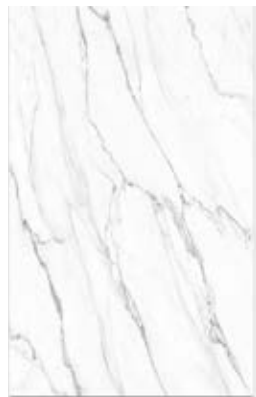
AXHPLC-63014



AXHPLC-20027



AXHPLC-73014



径溪 DUOMO

AHB213ED0248

<1600*3200*12 65度白 哑面>



皎霞 KARST GOLD

AHC213LD0319

<1600*3200*12 75度白 哑面>



月影白 ARABESCATO CORCHA

AHC213LD0180

<1600*3200*12 75度白 哑面>



银川 CALACATTA

AHB213ED0247

<1600*3200*12 65度白 哑面>



雪域白 WHITE

AHC213LD0179

<1600*3200*12 75度白 哑面>



敦煌 PULPIS BROWN

AHC213TS0499-22-21

<1600*3200*12咖啡坯 哑面>



楠木 NANMU

AHC213TS0501

<1600*3200*12 咖啡坯 哑面+精雕>



印迹 CONCRETE GREY

AHB213HD0157

<1600*3200*12 浅灰坯 哑面>



暮秋 XUANWU GREY

AHB213HD0174

<1600*3200*12 浅灰坯 哑面>



赤霄 IRON CORTEN

AHC213TS0512

<1600*3200*12 咖啡坯 哑面>

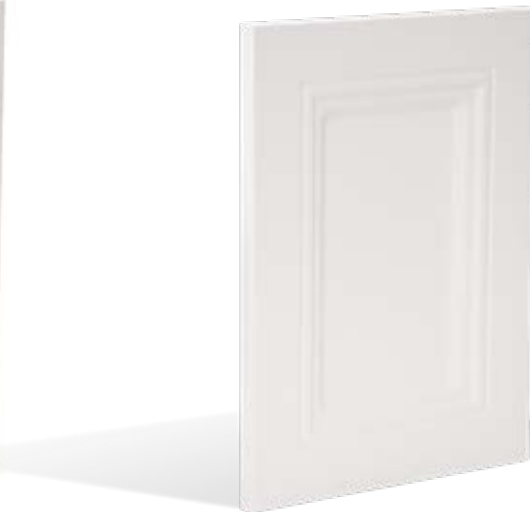
Lacquer finished door panel



AX-K014



AX-K010



AX-K013



AX-K007



AX-K009



AX-K017



AX-K015



AX-K004



AX-K020



AX-K-Matt



AX-K001



AX-K019



AX-K-High Gloss

Glass door panel



AX-G001



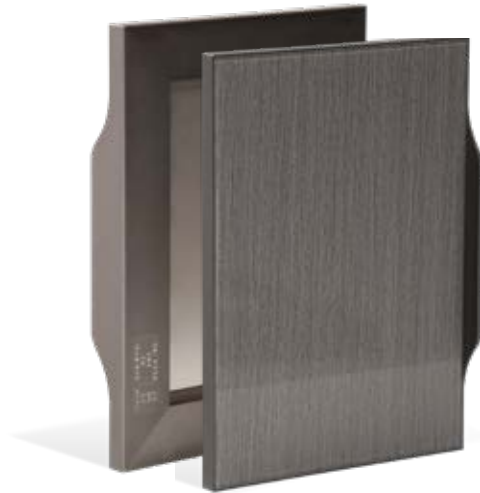
AX-G002



AX-G003



AX-G004



AX-G005



AX-G006



AX-G007



AX-G008



AX-G009



AX-G0010



AX-G0011



AX-G0012

Basket Accessories



303361



303411AP



306031AP



307020A



301607AP



301004AP



303605AP



304098A



303681



303691



306301



TR-180A



TR-180A



306231



307013



307012



401222



401017



201121



TDM-406

Sink



AXSS-JNY-406#
Size: 780W*450D*200H(MM)
Materials:Quartz



AXS-JNY-613
Size: 660W*400D*210H(MM)
Materials:S.S 304
Thickness:1.0mm



AXS-JNY-633A
Size: 420W*360D*210H(MM)
Materials:S.S 304
Thickness:1.2mm



AXSJNY-823B
Size: 1100W*480D*220H(MM)
Materials:S.S 304
Thickness:1.0mm



AXS-JNY-828B
Size: 780W*430D*230H(MM)
Materials:S.S 304
Thickness:1.0mm



AXS-FDR3321(CUPC)
Size: 33W*21D*10H(Inch)
Materials:S.S 304
Thickness:1.2mm



AXS-JNY-635
Size: 570W*420D*220H(MM)
Materials:S.S 304
Thickness:1.0mm



AXS-JNY-642
Size: 420W*420D*200H(MM)
Materials:S.S 304
Thickness:1.2mm



AXS-JNY-643
Size: 820W*470D*230H(MM)
Materials:S.S 304
Thickness:1.2mm



AXS-D2920(CUPC)
Size: 29W*20D*10H(Inch)
Materials:S.S 304
Thickness:1.2mm



AXS-SR2318(CUPC)
Size: 23W*18D*10H(Inch)
Materials:S.S 304
Thickness:1.2mm



AXS-TD3322(CUPC)
Size: 33W*22D*9H(Inch)
Materials:S.S 304
Thickness:1.2mm



AXS-JNY-644
Size: 1200W*480D*200H(MM)
Materials:S.S 304
Thickness:1.0mm



AXS-JNY-734
Size: 920W*450D*220H(MM)
Materials:S.S 304
Thickness:1.2mm



AXS-JNY-736
Size: 1160W*500D*220H(MM)
Materials:S.S 304
Thickness:1.2mm



AXS-JNY-806B
Size: 800W*450D*230H(MM)
Materials:S.S 304
Thickness:1.2mm



AXS-JNY-808C
Size: 500W*400D*228H(MM)
Materials:S.S 304
Thickness:1.2mm



AXS-JNY-817A
Size: 780W*430D*220H(MM)
Materials:S.S 304
Thickness:1.2mm

Faucet



AXF-JNY-8630



AXF-JNY-8631



AXF-JNY-8632



AXF-JNY-8635



AXF-2153



AXF-2111-1



AXF-2112



AXF-JNY-8653



AXF-JNY-8636



AXF-JNY-8612



AXF-JNY-8637



AXF-JNY-8639



AXF-82H07-CHR(CUPC)



AXF-82H07-BN-S(CUPC)



AXF-82H43-CHR (WM)



AXF-82H08C-CHR (WM)



AXF-JNY-8643



AXF-JNY-8651



AXF-JNY-8653



AXF-JNY-8654



AXF-SP02-CHR (WM)



AXF-JNY-8657



AXF-JNY-8659



AXF-JNY-8660

Wardrobe Accessories



AXWA-703311G



AXWA-703334A



AXWA-703353G



AXWA-6040270



AXWA-6042304



AXWA-LG02



AXWA-703541G



AXWA-GW13



AXWA-703501A



AXWA-GW08



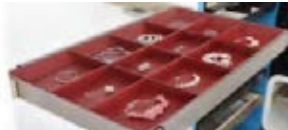
AXWA-6043101



AXWA-J30



AXWA-703441P



AXWA-703421P



AXWA-6040560#



AXWA-GW06/AXWA-GW09



AXWA-GW10



AXWA-AE062



AXWA-P153



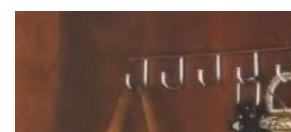
AXWA-0504A



AXHPLC-63014



AXWA-GW17



AXWA-GW18



AXWA-GW16



Project Reference





Project:Australia-Robert Ellis



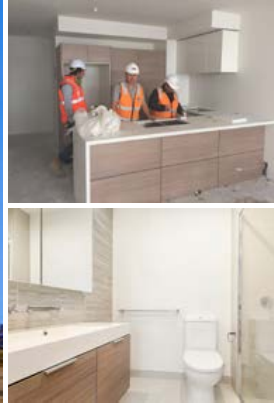


Project: Highlander Drive, Craigieburn, Vic 3064





Project:Canada-Daryoush Shahani



Project:Zano Apartment
Address:800 Sydney Rd, Brunswick VIC

Project:Lamart Development
Address: Lamart St, Strathmore



Project:Collier place Address:800 Sydney Rd, Brunswick VIC



Project: Mitchell Address: 800 Sydney Rd, Brunswick VIC




Project: Best Western Premier Hotel 115 Kew
Address: 115 Cotham Rd, Kew, VIC 3101

Project: Madina Park 89 Townhouse
Address: 115 Cotham Rd, Kew, VIC 3101



Foshan Axcellent Industry Co.,Ltd
佛山市利美家居实业有限公司

 2nd Floor, Building B, Lifeng Haoting, No.51 Zhenhua Rd, Lecong Town, Shunde District, Foshan City, Guangdong Province, China.

 +86-13928258773

 alex@axcellent.com.cn

 <https://www.axcellentgroup.com>

